



MEGHA INSTITUTE OF ENGINEERING AND TECHNOLOGY FOR WOMEN

UGC - AUTONOMOUS, Accredited by NAAC 'A' Grade



EAPCET | ECET | ICET | PGECET | POLYCET

Code: MGHA

www.meghaengg.ac.in



About MIETW

Megha Institute of Engineering and Technology for Women, established in 2008, marks a watershed moment in the educational landscape of the Medchal region. Under the guidance of the Crescent Educational Society and the stewardship of seasoned educators with over a decade of experience, the college has emerged as a beacon of academic excellence. As innovations continue to drive progress, we remain committed to our mission of empowering young women with the skills and knowledge they need to succeed in the dynamic world of tomorrow.

The institute is approved by AICTE, New Delhi, and affiliated to Jawaharlal Nehru Technological University, Hyderabad, while its NAAC accreditation with grade 'A' is a testament to its commitment to excellence. Our institution's philosophy is to produce well-rounded and knowledgeable professionals who are equipped to meet the demands of the industry. To achieve this goal, we provide our students with exposure to cutting-edge technologies, industry-relevant training, and rigorous subject content. Our emphasis on holistic education has enabled us to achieve remarkable success in the field of women's engineering education.

Our Vision

- ❖ To become a Premier Institute ensuring women's empowerment through holistic education.

Our Mission

- ❖ To provide state-of-the-art infrastructure for students and faculty supporting effective teaching - learning an process towards mutual development.
- ❖ To nurture and inculcate employability skillset through Industry-Institute Interaction Policy.
- ❖ To equip, enrich and transform the students to be responsible with a strong commitment to the society.

Our Management



Shree Nagam Mohan Reddy
Founder & Chairman



Dr K Malathi Reddy
Vice Chairperson



Ms. Sanjana Reddy Nagam
Executive Director

PROGRAMME OVERVIEW

Undergraduate Programme (UG)

The Undergraduate Courses at Megha Institute of Engineering and Technology for Women offers a comprehensive and challenging academic experience that prepares students for successful careers in the field of engineering. The programme combines theoretical knowledge with practical skills, and students are encouraged to participate in research projects and internships to gain real-world experience.

The prominent B. Tech Courses Available:

- ▶ Computer Science and Engineering (CSE)
- ▶ Computer Science and Information Technology (CS&IT)
- ▶ Artificial Intelligence and Data Science (AI&DS)
- ▶ Artificial Intelligence and Machine Learning (AI&ML)
- ▶ Electronics and Communication Engineering (ECE)
- ▶ Electrical and Electronics Engineering (EEE)
- ▶ Civil Engineering (CE)



Post Graduate Programme (PG)

A Post-Graduate (PG) course is a higher-level academic degree that a student can pursue after completing a bachelor's degree. PG courses typically require two years of full-time study and are designed to provide advanced knowledge and skills in a particular subject or professional field. The primary motive of a Postgraduate course is to prepare students for career prospects by expanding their knowledge in their chosen field of study.

The prominent Masters Degree Available:

- ▶ Master of Technology (M.Tech):
 - CSE
 - VLSI Design
- ▶ Master of Business Administration (MBA)
- ▶ Master of Computer Applications (MCA)



COMPUTER SCIENCE AND ENGINEERING (CSE)

Overview

Our CSE programme focuses on providing students with a comprehensive understanding of computer systems and the latest technologies. Students gain hands-on experience with programming, software development, database management, and more. The curriculum is constantly updated to ensure that it is aligned with industry trends and demands.



Practical Training

At MIETW, we emphasize practical training to help our students develop their skills and gain hands-on experience. Our computer labs are equipped with the latest technology and software tools, allowing students to work on real-world projects and gain experience in different areas of computer science.

Industry Relevance

The field of Computer Science and Engineering is constantly evolving, and we make sure to stay ahead of the curve. Our curriculum is designed to incorporate the latest advancements in technology and industry trends. We collaborate with leading organizations in the field to ensure that our students are equipped with the skills and knowledge needed to succeed in the ever-changing technology landscape.

Course Outcomes

The Computer Science and Engineering programme at MIETW aims to equip students with the knowledge and skills required to design, develop, and implement computer-based systems. By the end of the programme, students will be able to analyze complex problems, design and implement solutions, and communicate their ideas effectively. They will also be able to work in a team, adapt to new technologies, and pursue advanced studies in the field.

Career Prospects

Graduates of the Computer Science and Engineering programme can look forward to a wide range of career opportunities in both the public and private sectors. They can work as software developers, system analysts, database administrators, network engineers, and much more. With the increasing demand for technology-based solutions, there is a huge demand for skilled computer science professionals.

Computer Science and Information Technology (CS&IT)

Overview

Our CS & IT programme is designed to equip students with a strong foundation in both core computing concepts and modern IT practices. It offers in-depth knowledge of software development, networking, data management, cybersecurity, and emerging technologies. Students gain practical exposure through hands-on training, real-world projects, and industry-relevant tools.



Practical Training

At MIETW, we place a strong focus on experiential learning to enhance students' technical skills and industry readiness. Our state-of-the-art computer laboratories are equipped with advanced systems and modern software, enabling students to engage in practical sessions and real-time project work. This hands-on approach helps learners explore various domains of computer science, build problem-solving abilities, and gain valuable experience that prepares them for professional challenges.

Industry Relevance

The field of Computer Science and Information Technology (CS&IT) is continuously evolving, and we ensure our students stay ahead in this dynamic environment. Our curriculum is thoughtfully designed to integrate the latest advancements in IT, emerging technologies, and current industry practices. We actively collaborate with leading organizations and industry experts to provide relevant exposure, ensuring that our students are well-equipped with the skills, knowledge, and adaptability required to succeed in the rapidly changing technology landscape.

Course Outcomes

The Computer Science and Information Technology (CS&IT) programme at MIETW is designed to equip students with the knowledge and practical skills needed to develop, manage, and optimize modern IT systems. By the end of the programme, students will be able to analyze real-world challenges, design effective technology-driven solutions, and communicate their ideas with clarity. They will also develop the ability to work collaboratively in teams, adapt to rapidly evolving technologies, and pursue higher studies or professional careers in the field of information technology.

Career Prospects

Graduates of the Computer Science and Information Technology (CS&IT) programme can explore a diverse range of career opportunities across both public and private sectors. They can pursue roles such as IT specialists, software developers, system administrators, network engineers, data analysts, and cybersecurity professionals, among others. With the growing reliance on digital technologies and information systems, the demand for skilled CS&IT professionals continues to rise, offering excellent career growth and opportunities in the technology-driven world.

ELECTRONICS AND COMMUNICATION ENGINEERING (ECE)

Overview

Our ECE programme provides students with a strong foundation in electronics, communication systems, and signal processing. Students gain practical experience with circuit design, microprocessors, and digital signal processing. The curriculum is designed to keep up with industry trends, ensuring that students are well-equipped for the workforce.



Practical Training

At MIETW, we emphasize practical training to help our students develop their skills and gain hands-on experience. Our labs are equipped with the latest hardware and software tools, allowing students to work on real-world projects and gain experience in different areas of electronics and communication engineering.

Industry Relevance

The field of Electronics and Communication Engineering is critical to the development of modern technology. We keep our curriculum up-to-date with the latest technological advancements and industry trends, ensuring that our graduates are well-prepared to meet the demands of the industry.

Course Outcomes

The Electronics and Communication Engineering programme at MIETW aims to prepare students for a career in the electronics and communications industry. By the end of the programme, students will have a solid foundation in electronic systems design, communication technologies, and signal processing. They will also be able to analyze, design, and test electronic circuits and systems.

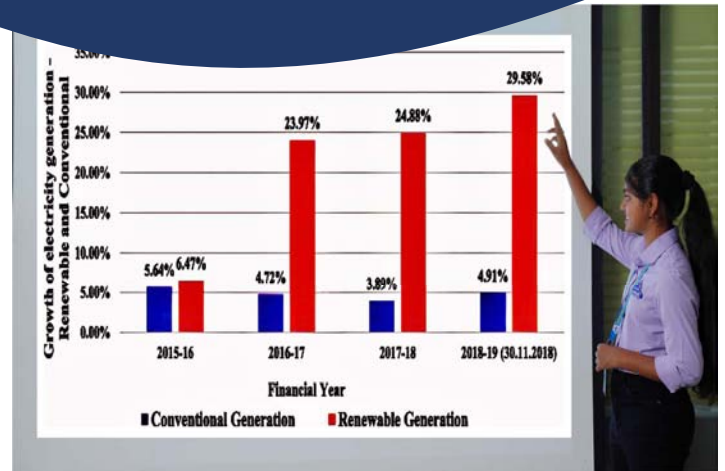
Career Prospects

Graduates of the Electronics and Communication Engineering programme can look forward to a wide range of career opportunities in both the public and private sectors. They can work as electronics engineers, communication engineers, control system engineers, and much more. With the increasing demand for communication and electronic systems, there is a huge demand for skilled electronics and communication engineers.

ARTIFICIAL INTELLIGENCE AND DATA SCIENCE (AI&DS)

Overview

Our AI and Data Science programme provides students with the skills and knowledge they need to become experts in the field of Artificial Intelligence and Data Science. Students learn about machine learning, deep learning, natural language processing, and more. The curriculum is designed to keep up with the latest developments in the field, ensuring that our graduates are well-prepared for a career in this exciting field.



Practical Training

Students of AI&DS receive practical training in various areas such as data preprocessing, data mining, machine learning, and deep learning. They work on real-world projects and case studies, which help them develop hands-on skills in AI and data science. Students also have access to state-of-the-art labs and infrastructure for experimenting with different AI and data science tools.

Industry Relevance

AI&DS is a highly relevant and in-demand course in today's digital world. The skills and knowledge gained through this course are essential for various industries such as finance, healthcare, e-commerce, and transportation. The course is designed in collaboration with industry experts, ensuring that students are well-equipped to meet the current and future demands of the industry.

Course Outcomes

Students will gain a deep understanding of the principles of Artificial Intelligence and its application in Data Science. They will develop skills in programming, machine learning, data analysis, and big data processing. They will be able to develop and deploy AI-based systems for solving real-world problems. Students will also gain hands-on experience in using state-of-the-art tools and technologies for AI and data science.

Career Prospects

Graduates of AI&DS can pursue careers in various fields such as data analysis, data mining, machine learning, and artificial intelligence. They can work as data scientists, machine learning engineers, business intelligence analysts, or data engineers in leading organizations. With the increasing demand for AI and data science professionals, job opportunities in this field are on the rise.

ARTIFICIAL INTELLIGENCE AND MACHINE LEARNING (AI&ML)

Overview

Our AI and Machine Learning programme is designed to provide students with a strong foundation in the principles of artificial intelligence and machine learning. Students gain practical experience with designing and developing intelligent systems, and learn about the latest technologies in the field. The curriculum is constantly updated to keep up with industry trends, ensuring that our graduates are well-equipped for a career in this exciting field.



Practical Training

Students of AI&ML receive practical training in various areas such as data preprocessing, data mining, machine learning algorithms, and deep learning. They work on real-world projects and case studies, which help them develop hands-on skills in AI and machine learning. Students also have access to state-of-the-art labs and infrastructure for experimenting with different AI and machine learning tools.

Industry Relevance

AI&ML is a highly relevant and in-demand course in today's digital world. The skills and knowledge gained through this course are essential for various industries such as finance, healthcare, e-commerce, and transportation. The course is designed in collaboration with industry experts, ensuring that students are well-equipped to meet the current and future demands of the industry.

Course Outcomes

Students will gain a deep understanding of the principles of Artificial Intelligence and its application in machine learning. They will develop skills in programming, data analysis, and machine learning algorithms. They will be able to design and develop intelligent systems for solving complex problems. Students will also gain hands-on experience in using state-of-the-art tools and technologies for AI and machine learning.

Career Prospects

Graduates of AI&ML can pursue careers in various fields such as software engineering, data analysis, machine learning, and artificial intelligence. They can work as machine learning engineers, data scientists, or research scientists in leading organizations. With the increasing demand for AI and machine learning professionals, job opportunities in this field are on the rise.

ELECTRICAL AND ELECTRONICS ENGINEERING (EEE)

Overview

Our EEE programme covers a wide range of topics including electrical systems, control systems, power electronics, and more. Students gain practical experience with designing and analyzing electrical systems, and learn to apply their skills to real-world problems. The curriculum is constantly updated to keep up with industry trends, ensuring that our students are well-prepared for the workforce.



Practical Training

At MIETW, we emphasize practical training to help our students develop their skills and gain hands-on experience. Our labs are equipped with the latest hardware and software tools, allowing students to work on real-world projects and gain experience in different areas of electrical and electronics engineering.

Industry Relevance

Electrical and Electronics Engineering is a rapidly advancing field, and we are committed to staying at the forefront of these advancements. We work closely with industry experts to ensure that our curriculum is in line with the latest technological developments and industry trends. Our students have the opportunity to participate in industry-led projects, internships, and workshops, giving them hands-on experience and exposure to the latest industry practices.

Course Outcomes

The Electrical and Electronics Engineering programme at MIETW aims to prepare students for a career in the electrical and electronics industry. By the end of the programme, students will have a solid foundation in electrical machines, power systems, control systems, and electronic devices. They will also be able to analyze, design, and test electrical and electronic systems.

Career Prospects

Graduates of the Electrical and Electronics Engineering programme can look forward to a wide range of career opportunities in both the public and private sectors. They can work as electrical engineers, electronics engineers, power system engineers, control system engineers, and much more. With the increasing demand for electrical and electronic systems, there is a huge demand for skilled electrical and electronics engineers.

CIVIL ENGINEERING (CE)

Overview

Our Civil Engineering programme is designed to provide students with a strong foundation in the principles of civil engineering. Students gain practical experience with designing and analyzing structures, as well as learning about the latest technologies in the field. The curriculum is constantly updated to keep up with industry trends, ensuring that our graduates are well-equipped for a career in civil engineering.



Practical Training

The Civil Engineering programme at MIETW is designed to provide students with hands-on experience through laboratory courses, design projects, and field trips. Students gain practical experience in areas such as structural design, material testing, and construction project management.

Industry Relevance

The Civil Engineering programme at MIETW is designed to be highly relevant to industry needs. The curriculum is regularly updated to reflect the latest trends and advancements in the field, and students have the opportunity to work on real-world projects in collaboration with industry partners. Graduates of the programme will be well-prepared to enter the workforce and contribute to the growth and development of the civil engineering industry.

Course Outcomes

Graduates of the Civil Engineering programme at MIETW will possess a deep understanding of the fundamentals of structural engineering, material science, and surveying. They will have the ability to analyze complex problems and develop solutions using advanced computational tools and techniques. The programme emphasizes the development of strong communication and team-working skills, preparing graduates to work collaboratively in a multidisciplinary environment.

Career Prospects

Civil Engineers are in high demand across a range of sectors, including construction, transportation, and infrastructure development. Graduates of the Civil Engineering programme at MIETW will be equipped with the skills and knowledge necessary to pursue a successful career in a variety of roles, including design engineer, project manager, and construction engineer.

Master of Technology (M.Tech: CSE, VLSI Design)

Overview

Our M.Tech programme in Computer Science and Engineering (CSE) and VLSI Design is designed to provide students with advanced knowledge and technical expertise in their chosen specialization. Students gain hands-on experience in areas such as advanced computing, chip design, embedded systems, and emerging technologies. The curriculum is continuously updated to reflect the latest advancements in research and industry practices, ensuring that our graduates are well-prepared for successful careers in both academia and the high-tech industry.



Practical Training

The M.Tech programme in Computer Science and Engineering (CSE) and VLSI Design at MIETW offers students extensive opportunities for practical training through research projects, lab work, internships, and industry collaborations. Students gain hands-on experience in areas such as advanced software development, system design, chip design, and hardware optimization. This practical exposure equips them with the skills needed to innovate, solve complex technical problems, and succeed in a rapidly evolving and competitive technological environment.

Industry Relevance

The M.Tech programme in Computer Science and Engineering (CSE) and VLSI Design at MIETW is designed to align closely with industry requirements and technological advancements. The curriculum is regularly updated to incorporate the latest developments in computing, chip design, and emerging technologies. Students gain opportunities to work on real-time projects, research initiatives, and collaborations with industry partners. Graduates of the programme are well-prepared to meet the evolving demands of the technology sector and contribute effectively to innovation, research, and development in their respective fields.

Course Outcomes

The M.Tech programme in Computer Science and Engineering (CSE) and VLSI Design at MIETW is designed to provide students with an in-depth understanding of advanced computing and semiconductor technologies. Graduates of the programme will develop strong expertise in areas such as advanced algorithms, system design, integrated circuit design, and emerging technologies. They will be equipped with the technical knowledge, research capabilities, and problem-solving skills required to excel in specialized technical roles, pursue innovation, and take on leadership positions in academia and the high-tech industry.

Career Prospects

Graduates of M.Tech programme in Computer Science and Engineering (CSE) and VLSI Design at MIETW will be well-prepared to pursue successful careers in a variety of high-tech industries, including software development, semiconductor design, embedded systems, and research and development. The programme emphasizes the development of strong analytical, technical, and problem-solving skills, enabling graduates to take on specialized roles and leadership positions in their organizations as well as contribute to innovation and technological advancement.

MASTER OF BUSINESS ADMINISTRATION: (MBA)

Overview

Our MBA programme is designed to provide students with a comprehensive understanding of business principles and practices. Students gain practical experience with managing teams, developing marketing strategies, and analyzing financial data. The curriculum is designed to keep up with the latest trends in the business world, ensuring that our graduates are well-equipped for a successful career in the field.



Practical Training

The Master of Business Administration programme at MIETW provides students with a range of opportunities for practical training, including internships, case studies, and consulting projects. Students will gain hands-on experience in areas such as market research, financial analysis, and strategic planning, preparing them for success in a dynamic and fast-paced business environment.

Industry Relevance

The Master of Business Administration programme at MIETW is designed to be highly relevant to industry needs. The curriculum is regularly updated to reflect the latest trends and advancements in the business world, and students have the opportunity to work on real-world projects in collaboration with industry partners. Graduates of the programme will be well-prepared to meet the evolving demands of the business world and make a meaningful impact in their organizations.

Course Outcomes

The Master of Business Administration programme at MIETW is designed to provide students with a comprehensive understanding of business principles and practices. Graduates of the programme will possess a deep understanding of topics such as accounting, finance, marketing, and strategic management, and will be equipped with the skills and knowledge necessary to be successful in a leadership role.

Career Prospects

Graduates of the Master of Business Administration programme at MIETW will be well-prepared to pursue a successful career in a range of industries, including finance, consulting, marketing, and management. The programme emphasizes the development of strong leadership and communication skills, preparing graduates to take on senior roles within their organizations.

MASTER OF COMPUTER APPLICATIONS: (MCA)

Overview

Our MCA programme is designed to provide students with a strong foundation in computer science and applications. Students gain practical experience with programming, software development, database management, and more. The curriculum is constantly updated to keep up with industry trends, ensuring that our graduates are well-prepared for a career in the field.



Practical Training

We believe in providing our students with hands-on experience and practical training. The MCA programme at MIETW includes regular workshops, seminars, and industry visits, as well as internships and projects in reputed organizations. This enables our students to gain exposure to the latest technologies and industry practices and prepares them for the challenges of the workplace.

Industry Relevance

The MCA programme at MIETW is designed to meet the evolving demands of the IT industry. We have collaborated with leading companies and industry experts to ensure that our curriculum is up-to-date and relevant. Our faculty members have industry experience and provide students with the necessary skills and knowledge to succeed in the competitive world of IT.

Course Outcomes

The MCA programme at MIETW is designed to equip students with a strong foundation in computer applications, software development, and business management. Upon completion of the programme, students will be able to apply theoretical knowledge to practical situations, analyze and solve complex problems, and design innovative solutions to meet industry requirements.

Career Prospects

The MCA programme at MIETW prepares students for a range of career opportunities in the software industry, IT consulting, and other related sectors. Graduates can work as software developers, database administrators, IT project managers, business analysts, and more. Many of our alumni have secured placements in top companies and startups across the country.



Campus Life At MIETW

Faculty

Our faculty is comprised of experienced and knowledgeable professors, who are dedicated to providing a quality education to our students. They are experts in their respective fields and are committed to imparting knowledge that goes beyond the classroom. They strive to create a challenging and supportive learning environment, where students can explore their interests and develop their skills.

Well Equipped Classrooms

Our classrooms are spacious, well-lit and equipped with modern amenities to ensure that students have the best learning experience. Each classroom is equipped with a projector, audio system, and Wi-Fi connectivity to facilitate teaching and learning. The classrooms are maintained regularly to ensure cleanliness and a comfortable learning environment.



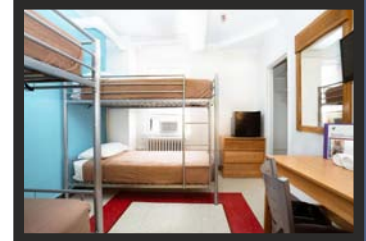
Transport Facilities

We have a fleet of buses that cover various routes in the city, picking up and dropping off students at designated stops. The buses are well-maintained and equipped with safety features to ensure a comfortable and secure journey for our students. Additionally, we have a dedicated transportation staff to oversee the smooth functioning of the services.



Hostel Facilities

Hostel facilities are designed to provide students with a comfortable and secure living environment. Rooms are spacious and well-furnished, providing students with all the necessary amenities for a comfortable stay. We also have excellent mess facilities that serve nutritious and hygienic food to students. Hostel has round-the-clock security, with security personnel patrolling the premises and CCTV cameras installed for added safety. We also have dedicated wardens and staff members who ensure that students have a smooth and hassle-free stay.



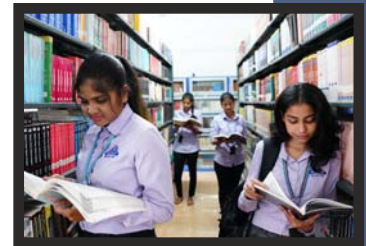
Laboratories

We understand the importance of hands-on learning in shaping a student's academic journey. Our laboratories are equipped with state-of-the-art equipment and modern technologies, providing students with practical training in their respective fields. Our skilled and experienced faculty members ensure that students receive adequate guidance and support during their lab sessions.



Library

Our library is a treasure trove of knowledge and information, with a vast collection of books and journals covering a wide range of subjects. Our students have access to both physical and digital resources, including a digital library and DELNET library. Additionally, the library provides a peaceful and conducive environment for study and research, with comfortable seating and ample lighting.



Auditoriums & Seminar Halls

Our institute has state-of-the-art auditoriums and seminar halls equipped with modern audio-visual facilities to cater to the needs of various events and seminars. The halls are spacious, air-conditioned, and well-lit, providing a comfortable and conducive environment for learning and collaboration.



Accessible Campus

Campus is designed to be inclusive and accessible to all, including individuals with disabilities. We have installed elevators in the major building, and have built ramps throughout the campus to ensure that individuals using wheelchairs can access easily all areas.





Student Activity Cell

Cultural Events

Artistic expression is an essential part of a holistic education. That's why we place a great emphasis on providing our students with ample opportunities to explore and showcase their creativity through dance, music, and drama. Our college hosts regular cultural events, where students get a chance to showcase their talents and participate in competitions with other institutions.



Technical Fests

Here students get an opportunity to showcase their skills and knowledge in their respective fields. These events bring together students from different branches, promoting collaboration and healthy competition. Technical fests are designed to challenge students to think creatively and innovatively, and to develop solutions that address real-world problems.



Sports

We understand the importance of sports in shaping the overall development of our students. We encourage our students to participate in a wide range of sports and activities, both competitive and recreational. We also organize inter-college tournaments, providing opportunities for our students to showcase their talent and compete with their peers from other colleges.



Student Clubs

College has several student clubs, including the ISRO and NSS, which offer students the opportunity to enhance their knowledge and skills beyond the classroom. These clubs are run by our students, with the guidance and support of our faculty members.



Student Wellness Center

We have a dedicated team of counseling faculty who are always available to offer guidance, advice, and support to our students. Whether it's academic advice, study abroad opportunities, or personal counseling, our counseling faculty are here to help students navigate their college experience and achieve their full potential.



Cafeteria

The cafeteria offers a wide range of options, including Chinese and Indian cuisine, catering to the diverse tastes of our Staff & Students. Situated under a canopy of almond trees, the seating area is comfortable and well-maintained, making it a perfect spot for students to hangout. Whether you're looking for a quick snack or a full meal, our cafeteria is the perfect place to satisfy your hunger.



NSS Activities

The National Service Scheme (NSS) programme at MIETW is an integral part of our educational philosophy. It provides an opportunity for students to participate in community service and social welfare activities, thus developing their personality, leadership qualities, and sense of social responsibility. Our NSS programme is designed to promote social harmony, national integration, and the spirit of community service among students.



Through our NSS programme, our students organize various events, including mentoring rural school children, creating awareness among the people for vaccination, tree plantation, and many more. These activities help our students to connect with society, and they become aware of the challenges that are present around them. The programme provides a platform for our students to interact with different sections of society, and in turn, they learn to appreciate the diversity of culture and tradition.



TRAINING & PLACEMENTS

We believe that education should not only impart knowledge but also enable students to pursue a fulfilling career that aligns with their passions and interests. Our team of experts work tirelessly to provide students with the latest insights and knowledge about the job market, preparing them for the challenges ahead.



Professional Development:

- ✓ Resume building workshops
- ✓ Interview preparation sessions
- ✓ Soft skills training
- ✓ Industry expert talks
- ✓ Job fairs and recruitment drives

Our unique approach to training and placements sets us apart. We provide personalized attention to each student and ensure that they are well-prepared to face the challenges of the industry. Our tie-ups with leading companies and regular interaction with industry experts give our students a competitive edge in the job market.

-- Office of Training and Placements.

Our Prominent Recruiters



OUR ACHIEVEMENTS



Accredited by NAAC

with Grade 'A' and
3.25 CGPA out of 4.

A testament of excellence
and dedication in providing
a top-notch education to its
students.

Excellent Placements

81% of our Students are well
placed in reputed
Multinational Companies
with best packages.

ISRO NODAL CENTER

We are the first Private
Engineering College in
Telangana as the Nodal
Center in Distance Learning
from IIRS-ISRO, Govt. of
India.

- ☞ Received Education Excellence Award 2022 from **Telangana Information Technology Association (TITA)**.
- ☞ Selected as the local lead for **NASA International Space** Apps Challenge for the past four consecutive years, representing Telangana and Hyderabad from 2020 to 2023.
- ☞ Established an Industry-Academia Collaboration with **Bosch India** for Skill Development programmes.
- ☞ Center of Excellence in collaboration with **Movate** (formerly known as CSS Corp.) Company, which focuses on cybersecurity.
- ☞ MIETW has achieved a remarkable milestone by being the only women's engineering college in India to be shortlisted for the MoE MHRD AICTE Mega Online Challenge "**SAMADHAN**" under Track 1 (Idea-Simulate-Win).
- ☞ MIETW in collaboration with Edunet Foundation, launched Microsoft "**Tech Saksham**". This programme offers college students to choose from various courses, including Artificial Intelligence and Cloud Computing.
- ☞ Institutional Member of **Indian Society for Technical Education**.
- ☞ Institutional Member of **Computer Society of India**.
- ☞ Certified by **ISO 9001 : 2015** for Quality Management System.



ENGINEERING THE FUTURE WITH MEGHA



WHY CHOOSE MIETW?

We are committed to providing students with a world-class education and preparing them for successful careers.

- ✓ INDUSTRY-ALIGNED PROGRAMMES
- ✓ EXPERIENCED FACULTY
- ✓ ADVANCED FACILITIES
- ✓ OPPORTUNITIES FOR HANDS-ON LEARNING

ADDRESS

Sy. No. 07, Edulabad(V), Ghatkesar (M),
Medchal (Dist.), Hyderabad,
Telangana - 501 301

FOLLOW US ON



GOOGLE MAP



Contact Us For More Information :

☎ +91 9032011203, 8712406807

☎ +91 7815910875, 9246805889

✉ info@meghaengg.ac.in

🌐 www.meghaengg.ac.in