



MEGHA INSTITUTE OF ENGINEERING AND TECHNOLOGY FOR WOMEN

(Approved by AICTE & Affiliated to JNTUH)

SY. NO. 7, EDULABAD (V), GHATKESAR (M), MEDCHAL (D), TELANGANA – 501301

4.2.4.1: Number of teachers and students using library per day over last one year

SLNO	REGISTER
1	Library Utilization – Login Register


Principal
Megha Inst. of Engg. & Tech for Women
Edulabad, Ghatkesar (Md)
Medchal Dist-501 301



MEGHA INSTITUTE OF ENGINEERING AND TECHNOLOGY FOR WOMEN

(Approved by AICTE & Affiliated to JNTUH)

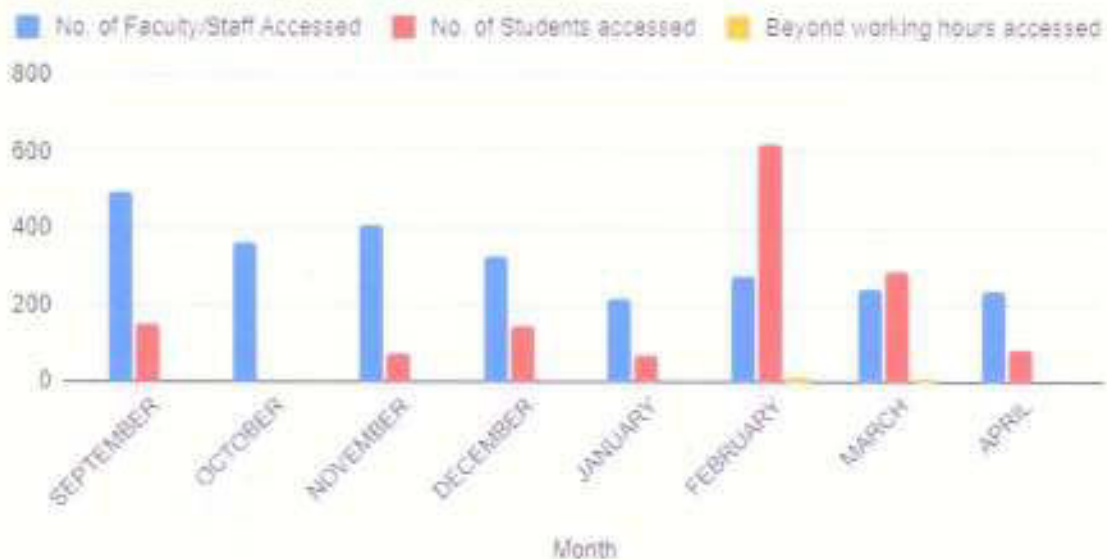
SY. NO. 7, EDULABAD (V), GHATKESAR (M), MEDCHAL (D), TELANGANA - 501301

Library Utilization - Login Register

2020 - 2021

S.No	Month	No. of Faculty/Staff Accessed	No. of Students accessed	Beyond working hours accessed	Total Users
1	JUNE	LOCK DOWN			
2	JULY	LOCK DOWN			
3	AUGUST	LOCK DOWN			
4	SEPTEMBER	494	151	1	646
5	OCTOBER	361	0	0	361
6	NOVEMBER	410	77	0	487
7	DECEMBER	325	144	0	469
8	JANUARY	217	68	0	285
9	FEBRUARY	275	620	12	907
10	MARCH	243	289	8	540
11	APRIL	236	83	0	319
	TOTAL	2561	1432	21	4014

No. of Faculty/Staff Accessed, No. of Students accessed and Beyond working hours accessed




Principal
Megha Inst. of Engg. & Tech for Women
Edulabad, Ghatkesar (MCH),
Medchal Dist-501 301



MEGHA INSTITUTE OF ENGINEERING AND TECHNOLOGY FOR WOMEN

(Approved by AICTE & Affiliated to JNTUH)

SY. NO. 7, EDULABAD (V), GHATKESAR (M), MEDCHAL (D), TELANGANA - 501301

Library Utilization – Login Register

September-2020

S.No	Date	No. of Faculty/Staff Accessed	No. of Students accessed	Beyond working hours accessed	Total Users
1.	1/9/20	25	8	0	33
2.	2/9/20	20	8	0	28
3.	3/9/20	20	8	0	28
4.	4/9/20	22	2	1	25
5.	5/9/20	20	1	0	21
6.	7/9/20	22	1	0	23
7.	8/9/20	21	0	0	21
8.	9/9/20	20	0	0	20
9.	11/9/20	20	8	0	28
10.	12/9/20	20	2	0	22
11.	14/9/20	20	31	0	51
12.	15/9/20	20	8	0	28
13.	16/9/20	20	10	0	30
14.	17/9/20	15	1	0	16
15.	18/9/20	20	7	0	27
16.	19/9/20	25	2	0	27
17.	21/9/20	20	7	0	27
18.	22/9/20	15	25	0	40
19.	23/9/20	20	0	0	20
20.	24/9/20	26	0	0	26
21.	25/9/20	15	5	0	20
22.	26/9/20	13	8	0	21
23.	28/9/20	24	1	0	25
24.	29/9/20	15	2	0	17
25.	30/9/20	16	6	0	22
	TOTAL	494	151	1	646

The number of Students of the library during the month of **September** in **2020** were **151**

The number of Staff of the library during the month of **September** in **2020** were **494**

Librarian


Coordinator


Principal
Megha Inst. of Engg. & Tech for Women
Edulabad, Ghatkesar (Md),
Medchal Dist-501 301



MEGHA INSTITUTE OF ENGINEERING AND TECHNOLOGY FOR WOMEN

(Approved by AICTE & Affiliated to JNTUH)

SY. NO. 7, EDULABAD (V), GHATKESAR (M), MEDCHAL (D), TELANGANA – 501301

Library Utilization – Login Register


October-2020

S.No	Date	No. of Faculty/Staff Accessed	No. of Students accessed	Beyond working hours accessed	Total Users
1.	1/10/20	15	0	0	15
2.	3/10/20	20	0	0	20
3.	5/10/20	17	0	0	17
4.	6/10/20	20	0	0	20
5.	7/10/20	20	0	0	20
6.	8/10/20	17	0	0	17
7.	9/10/20	16	0	0	16
8.	10/10/20	25	0	0	25
9.	12/10/20	23	0	0	23
10.	13/10/20	24	0	0	24
11.	16/10/20	16	0	0	16
12.	19/10/20	22	0	0	22
13.	20/10/20	17	0	0	17
14.	26/10/20	21	0	0	21
15.	27/10/20	20	0	0	20
16.	28/10/20	16	0	0	16
17.	29/10/20	18	0	0	18
18.	30/10/20	18	0	0	18
19.	31/10/20	16	0	0	16
	TOTAL	361	0	0	361

The number of Students of the library during the month of **October** in **2020** were 0

The number of Staff of the library during the month of **October** in **2020** were 361

Librarian


Coordinator


Principal
Megha Inst. of Engg. & Tech for Women
Edulabad, Ghatkesar (Md),
Medchal Dist-501 301



MEGHA INSTITUTE OF ENGINEERING AND TECHNOLOGY FOR WOMEN

(Approved by AICTE & Affiliated to JNTUH)

SY. NO. 7, EDULABAD (V), GHATKESAR (M), MEDCHAL (D), TELANGANA – 501301

Library Utilization – Login Register

November-2020

S.No	Date	No. of Faculty/Staff Accessed	No. of Students accessed	Beyond working hours accessed	Total Users
1.	2/11/20	21	0	0	21
2.	3/11/20	7	0	0	7
3.	4/11/20	25	0	0	25
4.	5/11/20	12	0	0	12
5.	6/11/20	29	3	0	32
6.	7/11/20	17	0	0	17
7.	9/11/20	16	3	0	19
8.	10/11/20	13	0	0	13
9.	11/11/20	13	0	0	13
10.	12/11/20	19	3	0	22
11.	13/11/20	23	7	0	30
12.	16/11/20	22	0	0	22
13.	17/11/20	17	5	0	22
14.	18/11/20	23	6	0	29
15.	19/11/20	25	6	0	31
16.	20/11/20	16	12	0	28
17.	21/11/20	23	0	0	23
18.	23/11/20	13	7	0	20
19.	24/11/20	21	0	0	21
20.	25/11/20	7	14	0	21
21.	26/11/20	5	10	0	15
22.	27/11/20	18	1	0	19
23.	28/11/20	16	0	0	16
24.	30/11/20	9	0	0	9
	TOTAL	410	77	0	487

The number of Students of the library during the month of November in 2020 were 77

The number of Staff of the library during the month of November in 2020 were 410

Librarian


Coordinator


Principal
Megha Inst. of Engg. & Tech for Women
Edulabad, Ghatkesar (Mdl),
Medchal Dist-501 301



MEGHA INSTITUTE OF ENGINEERING AND TECHNOLOGY FOR WOMEN

(Approved by AICTE & Affiliated to JNTUH)

SY. NO. 7, EDULABAD (V), GHATKESAR (M), MEDCHAL (D), TELANGANA – 501301

Library Utilization – Login Register

December-2020

S.No	Date	No. of Faculty/Staff Accessed	No. of Students accessed	Beyond working hours accessed	Total Users
1.	1/12/20	20	0	0	20
2.	2/12/20	19	0	0	19
3.	3/12/20	14	0	0	14
4.	4/12/20	9	33	0	42
5.	5/12/20	8	4	0	12
6.	7/12/20	26	8	0	34
7.	8/12/20	6	0	0	6
8.	9/12/20	18	0	0	18
9.	10/12/20	6	0	0	6
10.	11/12/20	19	0	0	19
11.	12/12/20	5	0	0	5
12.	14/12/20	15	0	0	15
13.	15/12/20	10	2	0	12
14.	16/12/20	19	0	0	19
15.	17/12/20	8	3	0	11
16.	18/12/20	13	0	0	13
17.	19/12/20	5	0	0	5
18.	21/12/20	7	3	0	10
19.	22/12/20	8	1	0	9
20.	23/12/20	13	21	0	34
21.	24/12/20	18	23	0	41
22.	28/12/20	16	8	0	24
23.	29/12/20	4	10	0	14
24.	30/12/20	21	6	0	27
25.	31/12/20	18	22	0	40
	TOTAL	325	144	0	469

The number of Students of the library during the month of **December** in 2020 were 144

The number of Staff of the library during the month of **December** in 2020 were 325

Librarian


Coordinator


Principal
Megha Inst. of Engg. & Tech for Women
Edulabad, Ghatkesar (Md),
Medchal Dist-501 301



MEGHA INSTITUTE OF ENGINEERING AND TECHNOLOGY FOR WOMEN

(Approved by AICTE & Affiliated to JNTUH)

SY. NO. 7, EDULABAD (V), GHATKESAR (M), MEDCHAL (D), TELANGANA – 501301

Library Utilization – Login Register

January-2021


S.No	Date	No. of Faculty/Staff Accessed	No. of Students accessed	Beyond working hours accessed	Total Users
1.	2/1/21	18	2	0	20
2.	4/1/21	17	2	0	19
3.	5/1/21	14	2	0	16
4.	6/1/21	9	0	0	9
5.	7/1/21	12	0	0	12
6.	8/1/21	6	0	0	6
7.	15/1/21	13	0	0	13
8.	16/1/21	16	2	0	18
9.	18/1/21	11	5	0	16
10.	19/1/21	10	6	0	16
11.	20/1/21	6	3	0	9
12.	21/1/21	12	3	0	15
13.	22/1/21	15	7	0	22
14.	23/1/21	15	6	0	21
15.	25/1/21	4	8	0	12
16.	27/1/21	12	10	0	22
17.	28/1/21	10	8	0	18
18.	29/1/21	12	1	0	13
19.	30/1/21	5	3	0	8
	TOTAL	217	68	0	285

The number of Students of the library during the month of **January** in **2021** were 68

The number of Staff of the library during the month of **January** in **2021** were 217

Librarian


Coordinator


Principal
Megha Inst. of Engg. & Tech for Women,
Edulabad, Ghatkesar (Md),
Medchal Dist-501 301



MEGHA INSTITUTE OF ENGINEERING AND TECHNOLOGY FOR WOMEN

(Approved by AICTE & Affiliated to JNTUH)

SY. NO. 7, EDULABAD (V), GHATKESAR (M), MEDCHAL (D), TELANGANA – 501301

Library Utilization – Login Register

February-2021

S.No	Date	No. of Faculty/Staff Accessed	No. of Students accessed	Beyond working hours accessed	Total Users
1	1/2/21	19	23	0	42
2	2/2/21	13	19	0	32
3	3/2/21	13	39	0	52
4	4/2/21	11	4	0	15
5	5/2/21	19	37	0	56
6	8/2/21	14	31	2	47
7	9/2/21	4	8	0	12
8	10/2/21	13	21	0	34
9	11/2/21	5	3	0	8
10	12/2/21	15	20	0	35
11	13/2/21	11	34	0	45
12	15/2/21	14	38	4	56
13	16/2/21	5	18	3	26
14	17/2/21	15	28	0	43
15	18/2/21	22	26	0	48
16	19/2/21	13	30	0	43
17	20/2/21	5	15	0	20
18	22/2/21	14	13	0	27
19	23/2/21	2	31	0	33
20	24/2/21	13	26	3	42
21	25/2/21	6	56	0	62
22	26/2/21	11	40	0	51
23	27/2/21	18	60	0	78
	TOTAL	275	620	12	907

The number of Students of the library during the month of **February** in **2021** were 620

The number of Staff of the library during the month of **February** in **2021** were 275

Librarian


Coordinator


Principal
Megha Inst. of Engg. & Tech for Women
Edulabad, Ghatkesar (Mdl),
Medchal Dist-501 301



MEGHA INSTITUTE OF ENGINEERING AND TECHNOLOGY FOR WOMEN

(Approved by AICTE & Affiliated to JNTUH)

SY. NO. 7, EDULABAD (V), GHATKESAR (M), MEDCHAL (D), TELANGANA - 501301

Library Utilization – Login Register

March - 2021

S.No	Date	No. of Faculty/Staff Accessed	No. of Students accessed	Beyond working hours accessed	Total Users
1.	2/3/21	11	23	0	34
2.	2/3/21	5	20	0	25
3.	3/3/21	15	39	0	54
4.	4/3/21	5	7	0	12
5.	5/3/21	12	4	0	16
6.	6/3/21	17	26	0	43
7.	8/3/21	11	7	0	18
8.	9/3/21	9	5	0	14
9.	10/3/21	16	5	1	22
10.	12/3/21	7	3	0	10
11.	13/3/21	10	16	1	27
12.	15/3/21	14	2	0	16
13.	16/3/21	10	0	0	10
14.	17/3/21	18	13	0	31
15.	18/3/21	7	24	5	36
16.	19/3/21	7	14	0	21
17.	20/3/21	11	26	0	37
18.	22/3/21	6	24	0	30
19.	23/3/21	9	9	1	19
20.	24/3/21	15	3	0	18
21.	25/3/21	8	8	0	16
22.	26/3/21	5	2	0	7
23.	27/3/21	11	3	0	14
24.	30/3/21	4	6	0	10
	TOTAL	243	289	8	540

The number of Students of the library during the month of **March** in **2021** were 289

The number of Staff of the library during the month of **March** in **2021** were 243

Librarian


Coordinator


Principal
Megha Inst. of Engg. & Tech for Women
Edulabad, Ghatkesar (Mdl),
Medchal Dist-501 301



MEGHA INSTITUTE OF ENGINEERING AND TECHNOLOGY FOR WOMEN

(Approved by AICTE & Affiliated to JNTUH)

SY. NO. 7, EDULABAD (V), GHATKESAR (M), MEDCHAL (D), TELANGANA - 501301

Library Utilization – Login Register

April- 2021

S.No	Date	No. of Faculty/Staff Accessed	No. of Students accessed	Beyond working hours accessed	Total Users
1.	1/4/21	13	5	0	18
2.	3/4/21	7	4	0	11
3.	6/4/21	17	4	0	21
4.	7/4/21	14	2	0	16
5.	8/4/21	12	1	0	13
6.	9/4/21	6	3	0	9
7.	10/4/21	13	5	0	18
8.	12/4/21	8	3	0	11
9.	15/4/21	12	0	0	12
10.	16/4/21	10	2	0	12
11.	17/4/21	15	1	0	16
12.	19/4/21	9	0	0	9
13.	20/4/21	14	0	0	14
14.	22/4/21	8	5	0	13
15.	23/4/21	9	8	0	17
16.	24/4/21	8	6	0	14
17.	26/4/21	16	9	0	25
18.	27/4/21	8	6	0	14
19.	28/4/21	13	3	0	16
20.	29/4/21	8	7	0	15
21.	30/4/21	16	9	0	25
	TOTAL	236	83	0	319

The number of Students of the library during the month of **April in 2021** were 83

The number of Staff of the library during the month of **April in 2021** were 236

Librarian


Coordinator

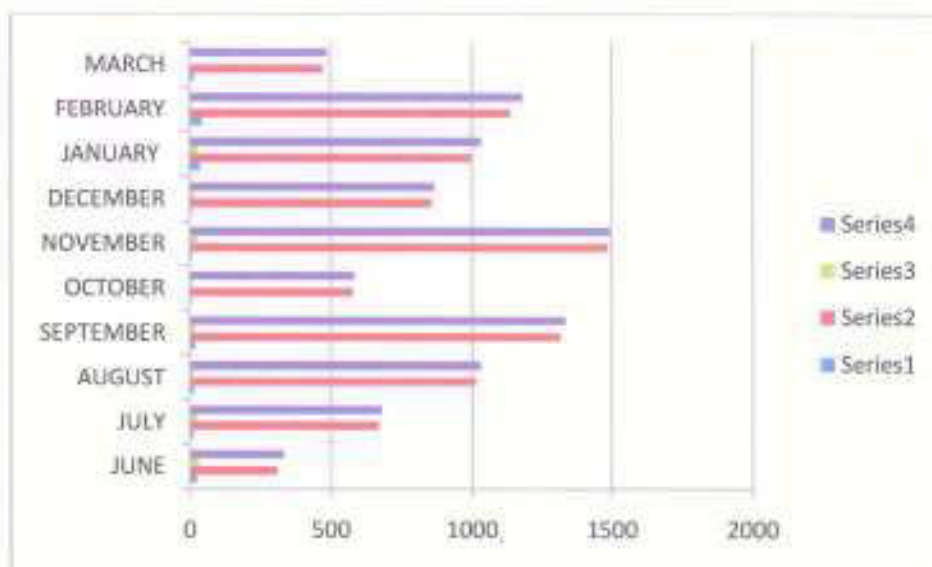

Principal
Megha Inst. of Engg. & Tech for Women
Edulabad, Ghatkesar (Mdt),
Medchal Dist-501 301



Library Utilization – Login Register

2019 – 2020

S.No	Month	No. of Faculty/Staff Accessed	No. of Students accessed	Beyond working hours accessed	Total Users
1	JUNE	24	310	33	334
2	JULY	13	668	26	681
3	AUGUST	15	1015	13	1030
4	SEPTEMBER	19	1315	19	1334
5	OCTOBER	7	577	10	584
6	NOVEMBER	8	1486	28	1494
7	DECEMBER	8	857	17	866
8	JANUARY	36	997	30	1033
9	FEBRUARY	43	1137	7	1180
10	MARCH	15	472	2	487
	TOTAL	188	8834	185	9023



Librarian

S. Neelakanta
Coordinator

[Signature]
Principal
Megha Inst. of Engg. & Tech for Women
Edulabad, Ghatkesar (MdI),
Medchal Dist-501 301



MEGHA INSTITUTE OF ENGINEERING AND TECHNOLOGY FOR WOMEN

(Approved by AICTE & Affiliated to JNTUH)

SY. NO. 7, EDULABAD (V), GHATKESAR (M), MEDCHAL (D), TELANGANA - 501301

Library Utilization – Login Register

June - 2019

S.No	Date	No. of Faculty/Staff Accessed	No. of Students accessed	Beyond working hours accessed	Total Users
1	3/6/19	0	13	0	13
2	4/6/19	3	3	3	6
3	7/6/19	0	30	0	30
4	11/6/19	1	29	11	30
5	12/6/19	1	16	8	17
6	13/6/19	2	10	0	12
7	14/6/19	1	17	0	18
8	15/6/19	1	15	0	16
9	17/6/19	3	2	0	5
10	18/6/19	0	33	2	33
11	19/6/19	1	15	3	16
12	20/6/19	0	16	0	16
13	21/6/19	3	1	0	4
14	22/6/19	1	9	0	10
15	24/6/19	3	8	3	11
16	25/6/19	1	31	3	32
17	26/6/19	0	7	0	7
18	27/6/19	1	8	0	9
19	28/6/19	2	21	0	23
20	29/6/19	0	26	0	26

The number of students of the library during the month of JUNE in 2019 were 26

The number of staff of the library during the month of JUNE in 2019 were 0

Librarian


Coordinator


Principal
Megha Inst. of Engg. & Tech for Women
Edulabad, Ghatkesar (Mdl),
Medchal Dist-501 301



MEGHA INSTITUTE OF ENGINEERING AND TECHNOLOGY FOR WOMEN

(Approved by AICTE & Affiliated to JNTUH)

SY. NO. 7, EDULABAD (V), GHATKESAR (M), MEDCHAL (D), TELANGANA - 501301

Library Utilization – Login Register

July - 2019

S.No	Date	No. of Faculty/Staff Accessed	No. of Students accessed	Beyond working hours accessed	Total Users
1	1/7/19	1	8	0	9
2	2/7/19	2	21	0	23
3	3/7/19	1	11	0	12
4	4/7/19	3	6	3	9
5	5/7/19	1	9	1	10
6	6/7/19	0	9	0	9
7	8/7/19	0	2	2	2
8	9/7/19	1	4	1	5
9	10/7/19	0	5	4	5
10	11/7/19	0	13	0	13
11	12/7/19	0	7	0	7
12	15/7/19	0	39	0	39
13	16/7/19	0	15	1	15
14	17/7/19	0	30	3	30
15	18/7/19	0	85	0	85
16	19/7/19	1	26	1	27
17	20/7/19	0	60	0	60
18	22/7/19	0	26	1	26
19	23/7/19	0	43	2	43
20	24/7/19	1	55	1	56
21	25/7/19	0	37	0	37
22	26/7/19	1	33	3	34
23	27/7/19	0	45	1	45
24	30/7/19	1	42	0	43
25	31/7/19	0	37	2	37
	TOTAL	13	668	26	681

The number of students of the library during the month of JULY in 2019 were 668

The number of staff of the library during the month of JULY in 2019 were 13

Librarian


Coordinator


Principal
Megha Inst. of Engg. & Tech for Women
Edulabadi, Ghatkesar (Mdl),
Medchal Dist-501 301



MEGHA INSTITUTE OF ENGINEERING AND TECHNOLOGY FOR WOMEN

(Approved by AICTE & Affiliated to JNTUH)

SY. NO. 7, EDULABAD (V), GHATKESAR (M), MEDCHAL (D), TELANGANA - 501301

Library Utilization – Login Register

August - 2019


S.No	Date	No. of Faculty/Staff Accessed	No. of Students accessed	Beyond working hours accessed	Total Users
1	1/8/19	0	15	0	15
2	2/8/19	0	20	0	20
3	3/8/19	1	70	0	71
4	5/8/19	1	49	3	50
5	6/8/19	0	59	0	59
6	7/8/19	1	82	5	83
7	8/8/19	0	65	0	65
8	13/8/19	0	34	0	34
9	14/8/19	0	8	0	8
10	16/8/19	0	26	0	26
11	17/8/19	2	31	2	33
12	19/8/19	2	49	1	51
13	20/8/19	0	69	0	69
14	21/8/19	0	52	2	52
15	22/8/19	0	91	0	91
16	23/8/19	1	51	0	52
17	26/8/19	1	60	0	61
18	27/8/19	1	38	0	39
19	28/8/19	2	35	0	37
20	29/8/19	3	36	0	39
21	30/8/19	0	33	0	33
22	31/8/19	0	42	0	42
	TOTAL	15	1015	13	1030

The number of students of the library during the month of **AUGUST** in **2019** were 1015

The number of staff of the library during the month of **AUGUST** in **2019** were 15

Librarian


Coordinator


Principal
Megha Inst. of Engg. & Tech for Women
Edulabad, Ghatkesar (Md),
Medchal Dist-501 301



MEGHA INSTITUTE OF ENGINEERING AND TECHNOLOGY FOR WOMEN

(Approved by AICTE & Affiliated to JNTUH)

SY. NO. 7, EDULABAD (V), GHATKESAR (M), MEDCHAL (D), TELANGANA - 501301

Library Utilization – Login Register

September - 2019

S.No	Date	No. of Faculty/Staff Accessed	No. of Students accessed	Beyond working hours accessed	Total Users
1	3/9/19	0	79	0	79
2	4/9/19	3	111	4	114
3	5/9/19	1	77	0	78
4	6/9/19	0	46	0	46
5	7/9/19	0	12	0	12
6	9/9/19	2	88	0	90
7	11/9/19	0	70	0	70
8	13/9/19	0	66	2	66
9	14/9/19	0	72	0	72
10	16/9/19	0	66	0	66
11	17/9/19	1	73	0	74
12	18/9/19	1	39	0	40
13	19/9/19	0	61	2	61
14	20/9/19	1	35	0	36
15	21/9/19	3	49	0	52
16	23/9/19	5	50	6	55
17	24/9/19	1	55	0	56
18	25/9/19	0	29	0	29
19	26/9/19	0	97	0	97
20	27/9/19	1	65	5	66
21	30/9/19	0	75	0	75
	TOTAL	19	1315	19	1334

The number of students of the library during the month of **SEPTEMBER** in **2019** were 1315

The number of staff of the library during the month of **SEPTEMBER** in **2019** were 19

Librarian


Coordinator


Principal
Megha Inst. of Engg. & Tech for Women
Edulabad, Ghatkesar (Mdl),
Medchal Dist-501 301



MEGHA INSTITUTE OF ENGINEERING AND TECHNOLOGY FOR WOMEN

(Approved by AICTE & Affiliated to JNTUH)

SY. NO. 7, EDULABAD (V), GHATKESAR (M), MEDCHAL (D), TELANGANA - 501301

Library Utilization – Login Register

October - 2019


S.No	Date	No. of Faculty/Staff Accessed	No. of Students accessed	Beyond working hours accessed	Total Users
1	1/10/19	0	10	0	10
2	3/10/19	1	36	0	37
3	4/10/19	0	20	0	20
4	5/10/19	1	3	0	4
5	16/10/19	1	0	0	1
6	17/10/19	0	1	0	1
7	18/10/19	0	1	0	1
8	21/10/19	0	65	0	65
9	22/10/19	0	81	2	81
10	23/10/19	0	108	0	108
11	24/10/19	0	39	0	39
12	25/10/19	0	34	1	34
13	26/10/19	1	60	0	61
14	28/10/19	0	35	0	35
15	29/10/19	0	31	2	31
16	30/10/19	0	23	0	23
17	31/10/19	3	30	5	33
	TOTAL	7	577	10	584

The number of students of the library during the month of **OCTOBER** in **2019** were 577

The number of staff of the library during the month of **OCTOBER** in **2019** were 7

Librarian


Coordinator


Principal
Megha Inst. of Engg. & Tech for Women
Edulabad, Ghatkesar (Mdl),
Medchal Dist-501 301



MEGHA INSTITUTE OF ENGINEERING AND TECHNOLOGY FOR WOMEN

(Approved by AICTE & Affiliated to JNTUH)

SY. NO. 7, EDULABAD (V), GHATKESAR (M), MEDCHAL (D), TELANGANA - 501301

Library Utilization – Login Register


November - 2019

S.No	Date	No. of Faculty/Staff Accessed	No. of Students accessed	Beyond working hours accessed	Total Users
1	1/11/19	0	41	0	41
2	2/11/19	0	33	0	33
3	4/11/19	2	38	0	40
4	5/11/19	2	55	0	57
5	6/11/19	0	84	0	84
6	7/11/19	2	82	0	84
7	8/11/19	0	63	0	63
8	9/11/19	0	32	2	32
9	11/11/19	1	55	0	56
10	13/11/19	0	83	5	83
11	14/11/19	0	101	1	101
12	15/11/19	0	75	2	75
13	16/11/19	0	71	8	71
14	18/11/19	0	62	3	62
15	19/11/19	0	42	0	42
16	20/11/19	0	80	3	80
17	21/11/19	1	58	2	59
18	22/11/19	0	51	0	51
19	23/11/19	0	75	2	75
20	25/11/19	0	69	0	69
21	26/11/19	0	55	0	55
22	27/11/19	0	74	0	74
23	28/11/19	0	47	0	47
24	29/11/19	0	30	0	30
25	30/11/19	0	30	0	30
TOTAL		8	1486	28	1494

The number of students of the library during the month of **NOVEMBER** in 2019 were 1486

The number of staff of the library during the month of **NOVEMBER** in 2019 were 8

Librarian


Coordinator


Principal
Megha Inst. of Engg. & Tech for Women
Edulabad, Ghatkesar (Mdl),
Medchal Dist-501 301



MEGHA INSTITUTE OF ENGINEERING AND TECHNOLOGY FOR WOMEN

(Approved by AICTE & Affiliated to JNTUH)

SY. NO. 7, EDULABAD (V), GHATKESAR (M), MEDCHAL (D), TELANGANA - 501301

Library Utilization – Login Register

December - 2019

S.No	Date	No. of Faculty/Staff Accessed	No. of Students accessed	Beyond working hours accessed	Total Users
1	02/12/19	0	8	0	8
2	03/12/19	0	18	0	18
3	04/12/19	0	17	3	17
4	05/12/19	1	29	0	30
5	06/12/19	0	14	1	14
6	07/12/19	0	42	0	43
7	09/12/19	0	20	3	20
8	10/12/19	0	37	1	37
9	11/12/19	1	25	0	26
10	12/12/19	1	28	0	29
11	13/12/19	2	25	6	27
12	14/12/19	0	23	0	23
13	16/12/19	0	23	1	23
14	17/12/19	0	38	0	38
15	18/12/19	0	37	0	37
16	19/12/19	1	41	0	42
17	20/12/19	0	53	2	53
18	21/12/19	1	34	0	35
19	23/12/19	0	78	0	78
20	24/12/19	1	48	0	49
21	27/12/19	0	64	0	64
22	28/12/19	0	59	0	59
23	30/12/19	0	44	0	44
24	31/12/19	0	52	0	52
	TOTAL	8	857	17	866

The number of students of the library during the month of **DECEMBER** in **2019** were 857

The number of staff of the library during the month of **DECEMBER** in **2019** were 8

Librarian


Coordinator


Principal
Megha Inst. of Engg. & Tech for Women
Edulabad, Ghatkesar (Mdl),
Medchal Dist-501 301



MEGHA INSTITUTE OF ENGINEERING AND TECHNOLOGY FOR WOMEN

(Approved by AICTE & Affiliated to JNTUH)

SY. NO. 7, EDULABAD (V), GHATKESAR (M), MEDCHAL (D), TELANGANA - 501301

Library Utilization – Login Register

January - 2020

S.No	Date	No. of Faculty/Staff Accessed	No. of Students accessed	Beyond working hours accessed	Total Users
1	2/1/20	1	53	0	54
2	3/1/20	1	16	0	17
3	4/1/20	0	40	2	40
4	6/1/20	0	92	1	92
5	7/1/20	0	41	3	41
6	8/1/20	1	61	0	62
7	9/1/20	0	65	0	65
8	10/1/20	1	50	0	51
9	17/1/20	0	7	0	7
10	18/1/20	0	2	0	2
11	20/1/20	1	52	0	53
12	21/1/20	0	67	14	67
13	22/1/20	2	47	6	49
14	23/1/20	1	41	1	42
15	24/1/20	3	68	0	71
16	25/1/20	5	64	1	69
17	27/1/20	8	54	0	62
18	28/1/20	1	54	0	55
19	29/1/20	4	38	2	42
20	30/1/20	3	60	0	63
21	31/1/20	4	25	0	29
	TOTAL	36	997	30	1033

The number of students of the library during the month of **JANUARY** in 2020 were 997

The number of staff of the library during the month of **JANUARY** in 2020 were 36

Librarian


Coordinator


Principal
Megha Inst. of Engg. & Tech for Women
Edulabad, Ghatkesar (Mdl),
Medchal Dist-501 301



MEGHA INSTITUTE OF ENGINEERING AND TECHNOLOGY FOR WOMEN

(Approved by AICTE & Affiliated to JNTUH)

SY. NO. 7, EDULABAD (V), GHATKESAR (M), MEDCHAL (D), TELANGANA - 501301

Library Utilization – Login Register


February - 2020

S.No	Date	No. of Faculty/Staff Accessed	No. of Students accessed	Beyond working hours accessed	Total Users
1	1/2/20	1	38	3	39
2	3/2/20	3	20	0	23
3	4/2/20	3	49	0	52
4	5/2/20	4	51	0	55
5	6/2/20	2	54	0	56
6	7/2/20	3	82	0	85
7	8/2/20	2	75	0	77
8	10/2/20	2	58	0	60
9	11/2/20	2	35	0	37
10	12/2/20	2	45	0	47
11	13/2/20	2	26	0	28
12	14/2/20	1	28	0	29
13	15/2/20	0	28	0	28
14	17/2/20	2	62	0	64
15	18/2/20	2	48	1	50
16	19/2/20	2	113	0	115
17	20/2/20	1	38	0	39
18	22/2/20	3	23	0	26
19	24/2/20	0	58	2	58
20	25/2/20	2	62	1	64
21	26/2/20	2	36	0	38
22	27/2/20	1	26	0	27
23	28/2/20	0	40	0	40
24	29/2/20	1	42	0	43
	TOTAL	43	1137	7	1180

The number of students of the library during the month of **FEBRUARY** in 2020 were 1137

The number of staff of the library during the month of **FEBRUARY** in 2020 were 43

Librarian


Coordinator


Principal
Megha Inst. of Engg. & Tech for Women
Edulabad, Ghatkesar (Mdl),
Medchal Dist-501 301



MEGHA INSTITUTE OF ENGINEERING AND TECHNOLOGY FOR WOMEN

(Approved by AICTE & Affiliated to JNTUH)

SY. NO. 7, EDULABAD (V), GHATKESAR (M), MEDCHAL (D), TELANGANA - 501301

Library Utilization – Login Register


March - 2020

S.No	Date	No. of Faculty/Staff Accessed	No. of Students accessed	Beyond working hours accessed	Total Users
1	2/3/20	0	33	1	33
2	3/3/20	3	70	0	73
3	4/3/20	2	64	0	66
4	5/3/20	1	34	0	35
5	6/3/20	3	53	0	56
6	7/3/20	2	24	1	26
7	10/3/20	1	54	0	55
8	11/3/20	1	70	0	71
9	12/3/20	1	39	0	40
10	13/3/20	1	30	0	31
11	16/3/20	0	1	0	1
	TOTAL	15	472	2	487

The number of students of the library during the month of **MARCH** in **2020** were 472

The number of staff of the library during the month of **MARCH** in **2020** were 15

Librarian


Coordinator


Principal
Megha Inst. of Engg. & Tech for Women
Edulabad, Ghatkesar (Mdt),
Medchal Dist-501 301



MEGHA INSTITUTE OF ENGINEERING AND TECHNOLOGY FOR WOMEN

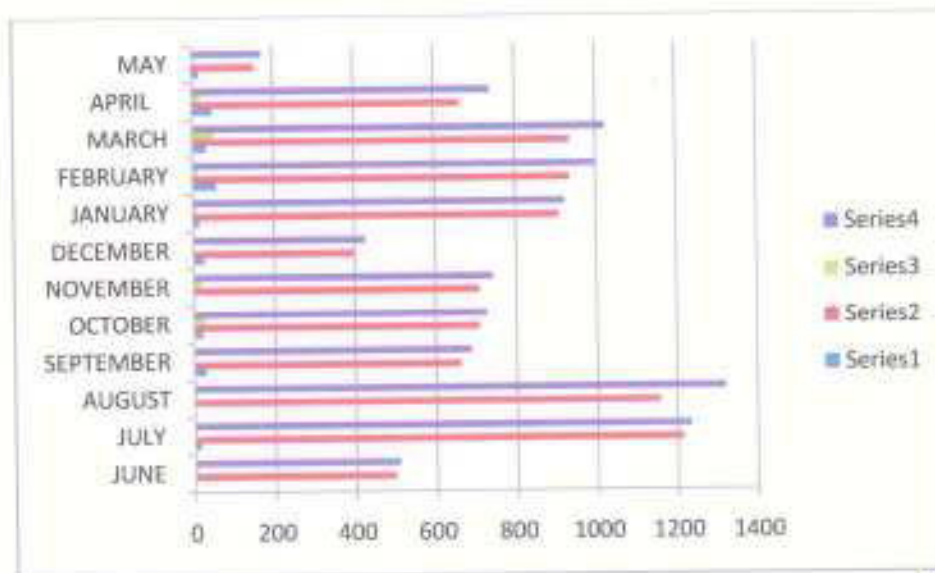
(Approved by AICTE & Affiliated to JNTUH)

SY. NO. 7, EDULABAD (V), GHATKESAR (M), MEDCHAL (D), TELANGANA - 501301

Library Utilization - Login Register

2018-2019

S.No	Month	No. of Faculty/Staff Accessed	No. of Students accessed	Beyond working hours accessed	Total Users
1	JUNE	2	499	7	509
2	JULY	15	1214	5	1234
3	AUGUST	1	1157	5	1320
4	SEPTEMBER	29	661	0	688
5	OCTOBER	22	709	28	728
6	NOVEMBER	4	709	20	743
7	DECEMBER	26	401	0	427
8	JANUARY	16	907	10	922
9	FEBRUARY	59	935	15	1000
10	MARCH	35	936	54	1025
11	APRIL	49	663	21	739
12	MAY	18	155	0	173



Librarian

S. Venkatesh
Coordinator

S. Venkatesh
Principal
Megha Inst. of Engg. & Tech for Women
Edulabad, Ghatkesar (Mdl),
Medchal Dist-501 301



MEGHA INSTITUTE OF ENGINEERING AND TECHNOLOGY FOR WOMEN

(Approved by AICTE & Affiliated to JNTUH)

SY. NO. 7, EDULABAD (V), GHATKESAR (M), MEDCHAL (D), TELANGANA - 501301

Library Utilization – Login Register

June-2018

S.No	Date	No. of Faculty/Staff Accessed	No. of Students accessed	Beyond working hours accessed	Total Users
1	01/06/2018	0	0	0	0
2	04/06/2018	0	1	0	1
3	05/06/2018	0	1	0	1
4	06/06/2018	0	2	0	2
5	07/06/2018	0	1	0	1
6	08/06/2018	0	0	0	0
7	11/06/2018	0	1	0	1
8	12/06/2018	1	19	0	20
9	13/06/2018	0	47	0	47
10	14/06/2018	0	47	0	47
11	15/06/2018	2	24	0	26
12	18/06/2018	0	16	0	16
13	19/06/2018	0	14	0	14
14	20/06/2018	0	28	0	28
15	21/06/2018	0	14	0	14
16	22/06/2018	0	8	0	8
17	23/06/2018	0	54	0	54
18	25/06/2018	0	63	4	67
19	26/06/2018	0	42	0	42
20	27/06/2018	0	72	0	72
21	28/06/2018	0	11	1	12
22	29/06/2018	0	4	2	6
23	30/06/2018	0	30	0	30
	TOTAL	2	499	7	509

The number of students of the library during the month of JUNE in 2018 were 499

The number of staff of the library during the month of JUNE in 2018 were 2

Librarian


Coordinator


Principal
Megha Inst. of Engg. & Tech for Women
Edulabad, Ghatkesar (Md).
Medchal Dist-501 301



MEGHA INSTITUTE OF ENGINEERING AND TECHNOLOGY FOR WOMEN

(Approved by AICTE & Affiliated to JNTUH)

SY. NO. 7, EDULABAD (V), GHATKESAR (M), MEDCHAL (D), TELANGANA - 501301

Library Utilization – Login Register

JULY-2018

S.No	Date	No. of Faculty/Staff Accessed	No. of Students accessed	Beyond working hours accessed	Total Users
1	03/07/2018	0	2	0	2
2	04/07/2018	13	47	0	60
3	05/07/2018	0	56	0	56
4	06/07/2018	0	7	0	7
5	07/07/2018	0	6	0	6
6	09/07/2018	0	18	0	18
7	10/07/2018	0	23	0	23
8	11/07/2018	0	43	0	43
9	12/07/2018	0	21	0	21
10	13/07/2018	0	69	0	69
11	16/07/2018	0	88	0	88
12	17/07/2018	0	55	0	55
13	18/07/2018	0	65	0	65
14	19/07/2018	0	100	0	100
15	20/07/2018	2	75	0	77
16	21/07/2018	0	72	0	72
17	23/07/2018	0	33	0	33
18	24/07/2018	0	45	0	45
19	25/07/2018	0	93	0	93
20	26/07/2018	0	69	0	69
21	27/07/2018	0	82	0	82
22	28/07/2018	0	71	5	76
23	30/07/2018	0	24	0	24
24	31/06/2018	0	50	0	50
	TOTAL	15	1214	5	1234

The number of students of the library during the month of JULY in 2018 were 1214

The number of staff of the library during the month of JULY in 2018 were 15

Librarian


Coordinator


Principal
Megha Inst. of Engg. & Tech for Women
Edulabad, Ghatkesar (Mdi),
Medchal Diet-501 301



MEGHA INSTITUTE OF ENGINEERING AND TECHNOLOGY FOR WOMEN

(Approved by AICTE & Affiliated to JNTUH)

SY. NO. 7, EDULABAD (V), GHATKESAR (M), MEDCHAL (D), TELANGANA - 501301

Library Utilization – Login Register

August-2018

S.No	Date	No. of Faculty/Staff Accessed	No. of Students accessed	Beyond working hours accessed	Total Users
1	01/08/2018	0	51	0	51
2	02/08/2018	0	44	0	44
3	03/08/2018	0	60	0	60
4	04/08/2018	0	58	0	58
5	07/08/2018	0	44	0	44
6	08/08/2018	0	84	0	84
7	09/08/2018	1	39	2	42
8	10/08/2018	0	64	0	64
9	11/08/2018	0	44	0	44
10	13/08/2018	0	76	0	76
11	14/08/2018	0	38	1	39
12	16/08/2018	0	104	0	104
13	18/08/2018	0	87	2	89
14	20/08/2018	0	61	0	61
15	21/08/2018	0	17	0	17
16	23/08/2018	0	41	0	41
17	24/08/2018	0	30	0	30
18	25/08/2018	0	16	0	16
19	27/08/2018	0	29	0	29
20	28/08/2018	0	22	0	22
21	29/08/2018	0	42	0	42
22	30/08/2018	0	43	0	43
23	31/08/2018	0	63	0	63
	TOTAL	1	1157	5	1320

The number of students of the library during the month of AUGUST in 2018 were 1157

The number of staff of the library during the month of AUGUST in 2018 were 1

Librarian


Coordinator


Principal
Megha Inst. of Engg. & Tech for Women
Edulabad, Ghatkesar (Md),
Medchal Dist-501 301



MEGHA INSTITUTE OF ENGINEERING AND TECHNOLOGY FOR WOMEN

(Approved by AICTE & Affiliated to JNTUH)

SY. NO. 7, EDULABAD (V), GHATKESAR (M), MEDCHAL (D), TELANGANA - 501301

Library Utilization – Login Register

September-2018

S.No	Date	No. of Faculty/Staff Accessed	No. of Students accessed	Beyond working hours accessed	Total Users
1	01/09/2018	0	23	0	23
2	04/09/2018	0	16	0	16
3	05/09/2018	4	16	0	20
4	06/09/2018	0	25	0	25
5	07/09/2018	0	20	0	20
6	08/09/2018	0	25	0	25
7	11/09/2018	5	41	0	46
8	12/09/2018	0	24	0	24
9	14/09/2018	3	54	0	57
10	15/09/2018	0	4	0	4
11	17/09/2018	4	61	0	65
12	18/09/2018	4	28	0	32
13	19/09/2018	0	37	0	37
14	20/09/2018	1	11	0	12
15	22/09/2018	2	21	0	23
16	24/09/2018	1	23	0	24
17	25/09/2018	0	44	0	44
18	26/09/2018	2	27	0	29
19	27/09/2018	1	54	0	55
20	28/09/2018	0	60	0	60
21	29/09/2018	1	47	0	47
	TOTAL	28	661	0	688

The number of students of the library during the month of **SEPTEMBER** in 2018 were 661

The number of staff of the library during the month of **SEPTEMBER** in 2018 were 28

Librarian


Coordinator


Principal
Megha Inst. of Engg. & Tech for Women
Edulabad, Ghatkesar (Md),
Medchal Dist-501 301



MEGHA INSTITUTE OF ENGINEERING AND TECHNOLOGY FOR WOMEN

(Approved by AICTE & Affiliated to JNTUH)

SY. NO. 7, EDULABAD (V), GHATKESAR (M), MEDCHAL (D), TELANGANA - 501301

Library Utilization – Login Register

October-2018

S.No	Date	No. of Faculty/Staff Accessed	No. of Students accessed	Beyond working hours accessed	Total Users
1	01/10/2018	0	45	0	45
2	03/10/2018	0	39	0	39
3	04/10/2018	0	58	0	58
4	05/10/2018	0	46	0	46
5	06/10/2018	0	23	0	23
6	08/10/2018	0	44	0	44
7	10/10/2018	0	0	0	0
8	11/10/2018	0	1	0	1
9	12/10/2018	0	6	0	6
10	13/10/2018	0	0	0	0
11	22/10/2018	1	57	0	58
12	23/10/2018	1	63	0	64
13	24/10/2018	0	82	0	82
14	25/10/2018	3	52	0	55
15	26/10/2018	4	23	0	24
16	27/10/2018	7	46	13	53
17	29/10/2018	1	42	5	43
18	30/10/2018	0	37	5	37
19	31/10/2018	5	45	5	50
	TOTAL	22	709	28	728

The number of students of the library during the month of **OCTOBER** in 2018 were 709

The number of staff of the library during the month of **OCTOBER** in 2018 were 22

Librarian


Coordinator


Principal
Megha Inst. of Engg. & Tech for Women
Edulabad, Ghatkesar (Md),
Medchal Dist-501 301



MEGHA INSTITUTE OF ENGINEERING AND TECHNOLOGY FOR WOMEN

(Approved by AICTE & Affiliated to JNTUH)

SY. NO. 7, EDULABAD (V), GHATKESAR (M), MEDCHAL (D), TELANGANA - 501301

Library Utilization – Login Register

November - 2018


S.No	Date	No. of Faculty/Staff Accessed	No. of Students accessed	Beyond working hours accessed	Total Users
1	8/11/2018	0	58	3	61
2	9/11/2018	0	72	1	73
3	10/11/2018	0	34	0	34
4	12/11/2018	0	46	3	49
5	13/11/2018	0	51	9	60
6	14/11/2018	1	48	2	61
7	15/11/2018	0	38	0	38
8	16/11/2018	0	33	0	33
9	17/11/2018	3	59	0	62
10	19/11/2018	0	30	0	30
11	20/11/2018	0	21	0	21
12	22/11/2018	0	18	0	18
13	24/11/2018	0	58	0	58
14	26/11/2018	0	36	0	36
15	27/11/2018	0	18	2	20
16	28/11/2018	0	35	0	35
17	29/11/2018	0	14	0	14
18	30/11/2018	0	40	0	40
	TOTAL	4	709	20	743

The number of students of the library during the month of **NOVEMBER** in **2018** were 709

The number of staff of the library during the month of **NOVEMBER** in **2018** were 4

Librarian


Coordinator


Principal
Megha Inst. of Engg. & Tech for Women
EduLabad, Ghatkesar (Mdi),
Medchal Dist-501 301



MEGHA INSTITUTE OF ENGINEERING AND TECHNOLOGY FOR WOMEN

(Approved by AICTE & Affiliated to JNTUH)

SY. NO. 7, EDULABAD (V), GHATKESAR (M), MEDCHAL (D), TELANGANA - 501301

Library Utilization – Login Register

December - 2018

S.No	Date	No. of Faculty/Staff Accessed	No. of Students accessed	Beyond working hours accessed	Total Users
1	1/12/2018	1	12	0	13
2	3/12/2018	1	21	0	22
3	4/12/2018	1	22	0	23
4	5/12/2018	3	27	0	30
5	12/12/2018	5	17	0	22
6	13/12/2018	5	16	0	21
7	14/12/2018	2	38	0	40
8	15/12/2018	1	24	0	25
9	17/12/2018	1	66	0	67
10	18/12/2018	1	35	0	36
11	19/12/2018	0	13	0	13
12	20/12/2018	1	6	0	7
13	21/12/2018	2	5	0	7
14	22/12/2018	1	1	0	2
15	27/12/2018	0	2	0	2
16	28/12/2018	0	50	0	50
17	29/12/2018	1	35	0	36
18	31/12/2018	0	11	0	11
	TOTAL	26	401	0	427

The number of students of the library during the month of **DECEMBER** in 2018 were 401

The number of staff of the library during the month of **DECEMBER** in 2018 were 26

Librarian


Coordinator


Principal
Megha Inst. of Engg. & Tech for Women
Edulabad, Ghatkesar (Md),
Medchal Dist-501 301



MEGHA INSTITUTE OF ENGINEERING AND TECHNOLOGY FOR WOMEN

(Approved by AICTE & Affiliated to JNTUH)

SY. NO. 7, EDULABAD (V), GHATKESAR (M), MEDCHAL (D), TELANGANA – 501301

Library Utilization – Login Register

JANUARY-2019

S.No	Date	No. of Faculty/Staff Accessed	No. of Students accessed	Beyond working hours accessed	Total Users
1	02/01/2019	0	113	0	113
2	03/01/2019	0	66	3	69
3	04/01/2019	0	97	0	97
4	05/01/2019	0	12	0	12
5	07/01/2019	0	46	0	46
6	08/01/2019	0	74	0	74
7	09/01/2019	2	41	0	43
8	10/01/2019	0	31	0	31
9	11/01/2019	0	29	0	29
10	16/01/2019	0	1	0	1
11	17/01/2019	0	28	0	28
12	18/01/2019	5	30	0	35
13	19/01/2019	1	28	0	29
14	21/01/2019	1	37	1	39
15	22/01/2019	1	36	0	36
16	23/01/2019	0	55	0	55
17	24/01/2019	0	42	0	42
18	25/01/2019	0	48	0	48
19	28/01/2019	0	20	1	21
20	29/01/2019	1	14	0	5
21	30/01/2019	5	28	2	35
22	31/01/2019	0	31	3	34
	TOTAL	16	907	10	922

The number of students of the library during the month of JANUARY in 2019 were 907

The number of staff of the library during the month of JANUARY in 2019 were 16

Librarian


Coordinator


Principal
Megha Inst. of Engg. & Tech for Women
Edulabad, Ghatkesar (Mdl),
Medchal Dist-501 301



MEGHA INSTITUTE OF ENGINEERING AND TECHNOLOGY FOR WOMEN

(Approved by AICTE & Affiliated to JNTUH)

SY. NO. 7, EDULABAD (V), GHATKESAR (M), MEDCHAL (D), TELANGANA - 501301

Library Utilization – Login Register

February-2019

S.No	Date	No. of Faculty/Staff Accessed	No. of Students accessed	Beyond working hours accessed	Total Users
1	01/02/2019	0	35	0	35
2	02/02/2019	0	10	2	12
3	04/02/2019	6	39	4	43
4	05/02/2019	1	64	1	66
5	06/02/2019	3	53	0	56
6	07/02/2019	2	41	0	43
7	08/02/2019	2	43	0	45
8	09/02/2019	3	17	3	23
9	11/02/2019	1	92	0	93
10	12/02/2019	7	28	0	32
11	13/02/2019	4	39	0	43
12	14/02/2019	3	74	0	77
13	15/02/2019	3	62	0	65
14	16/02/2019	1	26	0	27
15	18/02/2019	3	47	0	50
16	19/02/2019	4	28	0	32
17	20/02/2019	4	46	0	50
18	21/02/2019	4	44	2	50
19	22/02/2019	0	37	0	37
20	23/02/2019	1	18	1	20
21	25/02/2019	4	11	2	17
22	27/02/2019	2	30	0	32
23	28/02/2019	1	51	0	52
	TOTAL	59	935	15	1000

The number of students of the library during the month of **FEBRUARY** in **2019** were 935

The number of staff of the library during the month of **FEBRUARY** in **2019** were 59

Librarian


Coordinator


Principal
Megha Inst. of Engg. & Tech for Women
Edulabad, Ghatkesar (Mdl),
Medchal Dist-501 301



MEGHA INSTITUTE OF ENGINEERING AND TECHNOLOGY FOR WOMEN

(Approved by AICTE & Affiliated to JNTUH)

SY. NO. 7, EDULABAD (V), GHATKESAR (M), MEDCHAL (D), TELANGANA - 501301

Library Utilization – Login Register

March-2019

S.No	Date	No. of Faculty/Staff Accessed	No. of Students accessed	Beyond working hours accessed	Total Users
1	01/03/2019	2	42	3	47
2	02/03/2019	5	33	1	39
3	05/03/2019	2	24	1	27
4	06/03/2019	0	27	4	31
5	09/03/2019	3	76	2	81
6	11/03/2019	0	60	0	60
7	12/03/2019	3	91	1	95
8	13/03/2019	2	74	0	76
9	14/03/2019	0	8	1	9
10	15/03/2019	1	1	0	2
11	18/03/2019	1	76	2	79
12	19/03/2019	1	55	7	63
13	20/03/2019	0	61	1	62
14	22/03/2019	4	29	2	35
15	23/03/2019	3	50	1	54
16	25/03/2019	1	78	3	82
17	26/03/2019	1	49	1	51
18	27/03/2019	0	60	21	81
19	30/03/2019	6	42	3	51
	TOTAL	35	936	54	1025

The number of students of the library during the month of **MARCH** in **2019** were 936

The number of staff of the library during the month of **MARCH** in **2019** were 35

Librarian


Coordinator


Principal
Megha Inst. of Engg. & Tech for Women
Edulabad, Ghatkesar (Mdl),
Medchal Dist-501 301



MEGHA INSTITUTE OF ENGINEERING AND TECHNOLOGY FOR WOMEN

(Approved by AICTE & Affiliated to JNTUH)

SY. NO. 7, EDULABAD (V), GHATKESAR (M), MEDCHAL (D), TELANGANA - 501301

Library Utilization – Login Register

April-2019

S.No	Date	No. of Faculty/Staff Accessed	No. of Students accessed	Beyond working hours accessed	Total Users
1	01/04/2019	4	45	10	59
2	02/04/2019	0	26	3	29
3	03/04/2019	4	37	6	47
4	04/04/2019	3	25	2	30
5	08/04/2019	2	24	0	26
6	09/04/2019	2	23	0	25
7	10/04/2019	2	20	0	22
8	12/04/2019	4	30	0	34
9	15/04/2019	4	50	0	54
10	16/04/2019	4	47	0	51
11	17/04/2019	3	35	0	38
12	18/04/2019	3	46	0	49
13	20/04/2019	5	37	0	41
14	22/04/2019	0	23	0	30
15	23/04/2019	2	28	0	30
16	24/04/2019	0	20	0	20
17	25/04/2019	1	13	0	14
18	26/04/2019	3	23	0	26
19	27/04/2019	1	18	0	19
20	29/04/2019	2	61	0	63
21	30/04/2019	0	32	0	32
	TOTAL	49	663	21	739

The number of students of the library during the month of APRIL in 2019 were 663

The number of staff of the library during the month of APRIL in 2019 were 49

Librarian


Coordinator


Principal
Megha Inst. of Engg. & Tech for Women
Edulabad, Ghatkesar (Mdl),
Medchal Dist-501 301



MEGHA INSTITUTE OF ENGINEERING AND TECHNOLOGY FOR WOMEN

(Approved by AICTE & Affiliated to JNTUH)

SY. NO. 7, EDULABAD (V), GHATKESAR (M), MEDCHAL (D), TELANGANA - 501301

Library Utilization – Login Register

May-2019

S.No	Date	No. of Faculty/Staff Accessed	No. of Students accessed	Beyond working hours accessed	Total Users
1	01/05/2019	3	4	0	7
2	03/05/2019	4	14	0	18
3	04/05/2019	0	6	0	6
4	06/05/2019	0	21	0	21
5	07/05/2019	0	1	0	1
6	08/05/2019	2	0	0	2
7	09/05/2019	1	12	0	13
8	10/05/2019	1	1	0	2
9	11/05/2019	2	14	0	16
10	13/05/2019	1	20	0	21
11	15/05/2019	1	3	0	4
12	17/05/2019	0	2	0	2
13	18/05/2019	0	30	0	30
14	20/05/2019	0	10	0	10
15	21/05/2019	0	11	0	11
16	22/05/2019	0	4	0	4
17	25/05/2019	0	2	0	2
18	31/05/2019	3	0	0	3
	TOTAL	18	155	0	173

The The number of students of the library during the month of **MAY** in **2019** were 155

The number of staff of the library during the month of **MAY** in **2019** were 18

Librarian


Coordinator


Principal
Megha Inst. of Engg. & Tech for Women
Edulabad, Ghatkesar (Mdl),
Medchal Dist-501 301



MEGHA INSTITUTE OF ENGINEERING AND TECHNOLOGY FOR WOMEN

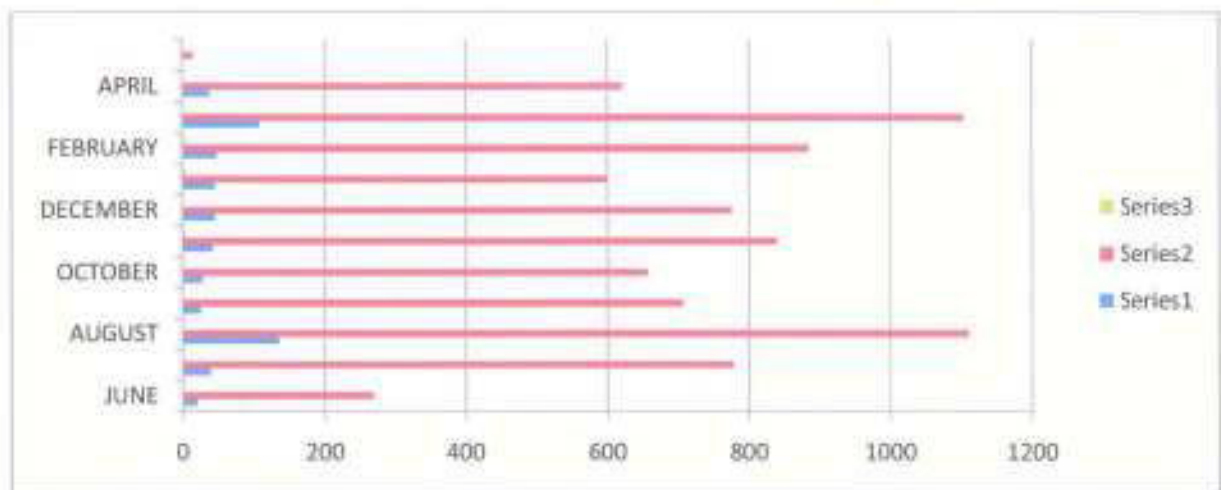
(Approved by AICTE & Affiliated to JNTUH)

SY. NO. 7, EDULABAD (V), GHATKESAR (M), MEDCHAL (D), TELANGANA - 501301

Library Utilization – Login Register

2017 – 2018

S.No	Month	No. of Faculty/Staff Accessed	No. of Students accessed	Beyond working hours accessed	Total Users
1	JUNE	20	269	0	289
2	JULY	39	778	1	817
3	AUGUST	135	1110	0	1241
4	SEPTEMBER	25	707	1	732
5	OCTOBER	27	657	0	684
6	NOVEMBER	42	840	4	882
7	DECEMBER	45	776	0	822
8	JANUARY	45	599	4	645
9	FEBRUARY	48	884	4	932
10	MARCH	108	1103	0	1164
11	APRIL	38	621	0	640
12	MAY	0	15	0	15
	TOTAL	572	8359	14	8863




Principal
Megha Inst. of Engg. & Tech for Women
Edulabad, Ghatkesar (Mdl).
Medchal Dist-501 301



MEGHA INSTITUTE OF ENGINEERING AND TECHNOLOGY FOR WOMEN

(Approved by AICTE & Affiliated to JNTUH)

SY. NO. 7, EDULABAD (V), GHATKESAR (M), MEDCHAL (D), TELANGANA - 501301

Library Utilization – Login Register

June - 2017

S.No	Date	No. of Faculty/Staff Accessed	No. of Students accessed	Beyond working hours accessed	Total Users
1	1/6/17	0	11	0	11
2	3/6/17	0	0	0	0
3	5/6/17	0	0	0	0
4	6/6/17	1	0	0	1
5	7/6/17	2	0	0	2
6	9/6/17	5	5	0	10
7	12/6/17	5	9	0	14
8	13/6/17	2	18	0	20
9	14/6/17	0	5	0	5
10	15/6/17	0	17	0	17
11	16/6/17	0	21	0	21
12	17/6/17	0	23	0	23
13	19/6/17	0	22	0	22
14	20/6/17	0	17	0	17
15	21/6/17	1	46	0	47
16	22/6/17	1	15	0	16
17	23/6/17	0	5	0	5
18	24/6/17	0	16	0	16
19	28/6/17	1	13	0	14
20	29/6/17	2	7	0	9
21	30/6/17	0	19	0	19
	TOTAL	20	269	0	289

The Number Of The Library During The Month Of JUNE In 2017 Were 269

The Number Of The Library During The Month Of JUNE In 2017 Were 20

Librarian


Coordinator


Principal
Megha Inst. of Engg. & Tech for Women
Edulabad, Ghatkesar (Md),
Medchal Dist-501 301



MEGHA INSTITUTE OF ENGINEERING AND TECHNOLOGY FOR WOMEN

(Approved by AICTE & Affiliated to JNTUH)

SY. NO. 7, EDULABAD (V), GHATKESAR (M), MEDCHAL (D), TELANGANA - 501301

Library Utilization – Login Register

July - 2017


S.No	Date	No. of Faculty/Staff Accessed	No. of Students accessed	Beyond working hours accessed	Total Users
1	1/7/17	0	14	0	14
2	3/7/17	0	18	0	18
3	4/7/17	0	19	0	19
4	5/7/17	1	52	0	53
5	6/7/17	0	10	0	10
6	7/7/17	4	7	0	11
7	10/7/17	1	13	1	14
8	11/7/17	0	5	0	5
9	12/7/17	2	18	0	20
10	13/7/17	0	20	0	20
11	14/7/17	1	44	0	45
12	15/7/17	1	52	0	53
13	18/7/17	2	45	0	47
14	19/7/17	1	77	0	78
15	20/7/17	1	2	0	3
16	21/7/17	0	32	0	32
17	22/7/17	4	41	0	45
18	24/7/17	0	33	0	33
19	25/7/17	5	48	0	53
20	26/7/17	2	37	0	39
21	27/7/17	1	41	0	42
22	28/7/17	2	33	0	35
23	29/7/17	4	81	0	85
24	31/7/17	7	36	0	43
	TOTAL	39	778	1	817

The Number Of The Library During The Month Of JULY In 2017 Were 778

The Number Of The Library During The Month Of JULY In 2017 Were 39

Librarian


Coordinator


Principal
Megha Inst. of Engg. & Tech for Women
Edulabad, Ghatkesar (Md).
Medchal Dist-501 301



MEGHA INSTITUTE OF ENGINEERING AND TECHNOLOGY FOR WOMEN

(Approved by AICTE & Affiliated to JNTUH)

SY. NO. 7, EDULABAD (V), GHATKESAR (M), MEDCHAL (D), TELANGANA - 501301

Library Utilization – Login Register

August - 2017

S.No	Date	No. of Faculty/Staff Accessed	No. of Students accessed	Beyond working hours accessed	Total Users
1	1/8/17	4	47	0	51
2	2/8/17	5	88	0	93
3	3/8/17	7	75	0	82
4	4/8/17	5	40	0	41
5	5/8/17	11	50	0	61
6	7/8/17	7	0	0	7
7	8/8/17	8	48	0	56
8	9/8/17	6	27	0	33
9	10/8/17	5	76	0	81
10	11/8/17	13	40	0	53
11	16/8/17	5	37	0	42
12	17/8/17	14	47	0	61
13	18/8/17	15	46	0	61
14	19/8/17	8	40	0	48
15	21/8/17	10	37	0	47
16	22/8/17	1	66	0	67
17	23/8/17	1	100	0	101
18	24/8/17	0	65	0	65
19	26/8/17	0	45	0	45
20	28/8/17	6	43	0	49
21	29/8/17	2	47	0	49
22	30/8/17	2	29	0	31
23	31/8/17	0	17	0	17
	TOTAL	135	1110	0	1241

The Number Of The Library During The Month Of AUGUST In 2017 Were 1110

The Number Of The Library During The Month Of AUGUST In 2017 Were 135

Librarian


Coordinator


Principal
Megha Inst. of Engg. & Tech for Women
Edulabad, Ghatkesar (Mdl),
Medchal Dist-501 301



MEGHA INSTITUTE OF ENGINEERING AND TECHNOLOGY FOR WOMEN

(Approved by AICTE & Affiliated to JNTUH)

SY. NO. 7, EDULABAD (V), GHATKESAR (M), MEDCHAL (D), TELANGANA - 501301

Library Utilization – Login Register

September - 2017

S.No	Date	No. of Faculty/Staff Accessed	No. of Students accessed	Beyond working hours accessed	Total Users
1	1/9/17	4	35	0	39
2	4/9/17	2	59	0	61
3	6/9/17	1	75	1	76
4	7/9/17	3	59	0	62
5	8/9/17	0	26	0	26
6	9/9/17	0	58	0	58
7	11/9/17	0	55	0	55
8	12/9/17	2	25	0	27
9	13/9/17	0	19	0	19
10	14/9/17	0	21	0	21
11	15/9/17	2	52	0	54
12	16/9/17	5	48	0	53
13	19/9/17	2	56	0	58
14	21/9/17	2	78	0	80
15	22/9/17	1	31	0	32
16	23/9/17	1	10	0	11
	TOTAL	25	707	1	732

The Number Of The Library During The Month Of SEPTEMBER In 2017 Were 707

The Number Of The Library During The Month Of SEPTEMBER In 2017 Were 25

Librarian


Coordinator


Principal
Megha Inst. of Engg. & Tech for Women
Edulabad, Ghatkesar (Md),
Medchal Dist-501 301



MEGHA INSTITUTE OF ENGINEERING AND TECHNOLOGY FOR WOMEN

(Approved by AICTE & Affiliated to JNTUH)

SY. NO. 7, EDULABAD (V), GHATKESAR (M), MEDCHAL (D), TELANGANA - 501301

Library Utilization – Login Register

October - 2017

S.No	Date	No. of Faculty/Staff Accessed	No. of Students accessed	Beyond working hours accessed	Total Users
1	4/10/17	2	16	0	18
2	5/10/17	1	37	0	38
3	6/10/17	1	45	0	46
4	7/10/17	0	18	0	18
5	9/10/17	0	35	0	35
6	10/10/17	0	19	0	19
7	11/10/17	3	47	0	50
8	13/10/17	3	34	0	37
9	16/10/17	0	35	0	35
10	17/10/17	2	22	0	24
11	18/10/17	1	48	0	49
12	20/10/17	4	47	0	51
13	21/10/17	6	70	0	76
14	23/10/17	0	37	0	37
15	24/10/17	0	33	0	33
16	25/10/17	0	24	0	24
17	26/10/17	3	14	0	17
18	27/10/17	0	29	0	29
19	28/10/17	0	8	0	8
20	30/10/17	1	27	0	28
21	31/10/17	0	12	0	12
	TOTAL	27	657	0	684

The Number Of The Library During The Month Of **OCTOBER** In 2017 Were 657

The Number Of The Library During The Month Of **OCTOBER** In 2017 Were 27

Librarian


Coordinator


Principal
Megha Inst. of Engg. & Tech for Women
Edulabad, Ghatkesar (Mdl),
Medchal Dist-501 301



MEGHA INSTITUTE OF ENGINEERING AND TECHNOLOGY FOR WOMEN

(Approved by AICTE & Affiliated to JNTUH)

SY. NO. 7, EDULABAD (V), GHATKESAR (M), MEDCHAL (D), TELANGANA - 501301

Library Utilization – Login Register

November - 2017


S.No	Date	No. of Faculty/Staff Accessed	No. of Students accessed	Beyond working hours accessed	Total Users
1	1/11/17	4	30	0	34
2	2/11/17	0	23	0	23
3	3/11/17	1	59	0	60
4	6/11/17	1	41	0	42
5	7/11/17	2	53	0	55
6	8/11/17	2	43	3	45
7	9/11/17	2	6	0	8
8	10/11/17	3	59	0	62
9	13/11/17	1	45	0	46
10	14/11/17	0	21	0	21
11	15/11/17	0	48	0	48
12	16/11/17	2	34	0	36
13	17/11/17	4	35	0	39
14	18/11/17	4	28	1	32
15	20/11/17	0	39	0	39
16	21/11/17	0	29	0	29
17	22/11/17	0	46	0	46
18	23/11/17	0	6	0	6
19	24/11/17	3	44	0	47
20	25/11/17	0	17	0	17
21	27/11/17	1	45	0	46
22	28/11/17	9	20	0	29
23	29/11/17	3	40	0	43
24	30/11/17	0	29	0	29
	TOTAL	42	840	4	882

The Number Of The Library During The Month Of **NOVEMBER** In 2017 Were 840

The Number Of The Library During The Month Of **NOVEMBER** In 2017 Were 42

Librarian


Coordinator


Principal
Megha Inst. of Engg. & Tech for Women
Edulabad, Ghatkesar (Mdl),
Medchal Dist-501 301



MEGHA INSTITUTE OF ENGINEERING AND TECHNOLOGY FOR WOMEN

(Approved by AICTE & Affiliated to JNTUH)

SY. NO. 7, EDULABAD (V), GHATKESAR (M), MEDCHAL (D), TELANGANA - 501301

Library Utilization – Login Register

December - 2017

S.No	Date	No. of Faculty/Staff Accessed	No. of Students accessed	Beyond working hours accessed	Total Users
1	1/12/17	0	15	0	15
2	4/12/17	3	24	0	27
3	6/12/17	1	36	0	38
4	7/12/17	1	39	0	40
5	8/12/17	1	29	0	30
6	9/12/17	1	20	0	21
7	11/12/17	1	30	0	31
8	12/12/17	0	25	0	25
9	13/12/17	0	14	0	14
10	14/12/17	1	37	0	38
11	15/12/17	1	24	0	25
12	16/12/17	0	30	0	30
13	18/12/17	1	66	0	67
14	19/12/17	0	65	0	65
15	20/12/17	0	8	0	8
16	21/12/17	23	48	0	71
17	22/12/17	9	20	0	29
18	23/12/17	0	25	0	25
19	27/12/17	0	43	0	43
20	28/12/17	0	59	0	59
21	29/12/17	1	48	0	49
22	30/12/17	1	71	0	72
	TOTAL	45	776	0	822

The Number Of The Library During The Month Of **DECEMBER** In 2017 Were 776

The Number Of The Library During The Month Of **DECEMBER** In 2017 Were 45

Librarian


Coordinator





MEGHA INSTITUTE OF ENGINEERING AND TECHNOLOGY FOR WOMEN

(Approved by AICTE & Affiliated to JNTUH)

SY. NO. 7, EDULABAD (V), GHATKESAR (M), MEDCHAL (D), TELANGANA - 501301

Library Utilization – Login Register

January - 2018

S.No	Date	No. of Faculty/Staff Accessed	No. of Students accessed	Beyond working hours accessed	Total Users
1	2/1/18	1	15	0	16
2	3/1/18	3	24	0	27
3	4/1/18	1	36	0	38
4	5/1/18	1	39	0	40
5	6/1/18	2	29	0	31
6	8/1/18	1	20	1	21
7	9/1/18	1	30	0	31
8	17/1/18	0	25	0	25
9	18/1/18	0	14	0	14
10	19/1/18	1	37	0	38
11	20/1/18	1	25	0	26
12	22/1/18	0	30	0	30
13	23/1/18	1	66	0	67
14	24/1/18	0	65	1	65
15	25/1/18	0	8	0	8
16	27/1/18	23	48	0	71
17	29/1/18	9	20	0	29
18	30/1/18	0	25	2	25
19	31/1/18	0	43	0	43
	TOTAL	45	599	4	645

The Number Of The Library During The Month Of JANUARY In 2018 Were 599

The Number Of The Library During The Month Of JANUARY In 2018 Were 45

Librarian


Coordinator


Principal
Megha Inst. of Engg. & Tech for Women
Edulabad, Ghatkesar (Md),
Medchal Dist-501 301



MEGHA INSTITUTE OF ENGINEERING AND TECHNOLOGY FOR WOMEN

(Approved by AICTE & Affiliated to JNTUH)

SY. NO. 7, EDULABAD (V), GHATKESAR (M), MEDCHAL (D), TELANGANA - 501301

Library Utilization – Login Register

February - 2018

S.No	Date	No. of Faculty/Staff Accessed	No. of Students accessed	Beyond working hours accessed	Total Users
1	1/2/18	3	18	2	21
2	2/2/18	0	56	0	56
3	3/2/18	0	40	0	40
4	5/2/18	3	73	0	76
5	6/2/18	3	70	0	73
6	7/2/18	1	27	0	28
7	8/2/18	1	18	0	19
8	9/2/18	2	22	0	24
9	10/2/18	0	22	0	22
10	12/2/18	2	17	0	19
11	14/2/18	0	22	0	22
12	15/2/18	4	47	0	51
13	16/2/18	1	61	0	62
14	17/2/18	3	48	0	51
15	19/2/18	2	63	1	65
16	20/2/18	8	58	0	66
17	21/2/18	6	34	0	40
18	22/2/18	2	22	0	24
19	23/2/18	0	22	0	22
20	24/2/18	2	17	1	19
21	26/2/18	0	22	0	22
22	27/2/18	4	47	0	51
23	28/2/18	1	58	0	59
	TOTAL	48	884	4	932

The Number Of The Library During The Month Of FEBRUARY In 2018 Were 884

The Number Of The Library During The Month Of FEBRUARY In 2018 Were 48

Librarian


Coordinator


Principal
Megha Inst. of Engg. & Tech for Women
Edulabad, Ghatkesar (Md),
Medchal Dist-501 301



MEGHA INSTITUTE OF ENGINEERING AND TECHNOLOGY FOR WOMEN

(Approved by AICTE & Affiliated to JNTUH)

SY. NO. 7, EDULABAD (V), GHATKESAR (M), MEDCHAL (D), TELANGANA – 501301

Library Utilization – Login Register

March - 2018

S.No	Date	No. of Faculty/Staff Accessed	No. of Students accessed	Beyond working hours accessed	Total Users
1	2/3/18	7	27	0	34
2	3/3/18	4	45	0	49
3	5/3/18	5	58	0	63
4	6/3/18	3	60	0	63
5	7/3/18	3	40	0	43
6	8/3/18	5	58	0	63
7	9/3/18	3	60	0	63
8	10/3/18	3	40	0	24
9	12/3/18	7	27	0	34
10	13/3/18	4	45	0	49
11	14/3/18	5	58	0	63
12	15/3/18	3	40	0	43
13	16/3/18	5	58	0	46
14	17/3/18	3	60	0	63
15	19/3/18	3	40	0	43
16	20/3/18	7	27	0	42
17	21/3/18	4	45	0	49
18	22/3/18	7	27	0	34
19	23/3/18	4	45	0	49
20	24/3/18	5	58	0	43
21	27/3/18	3	40	0	44
22	28/3/18	5	58	0	63
23	29/3/18	3	60	0	63
24	31/3/18	7	27	0	34
	TOTAL	108	1103	0	1164

The Number Of The Library During The Month Of **MARCH** In 2018 Were 1103

The Number Of The Library During The Month Of **MARCH** In 2018 Were 108

Librarian


Coordinator


Principal
Megha Inst. of Engg. & Tech for Women
Edulabad, Ghatkesar (Mdl),
Medchal Dist-501 301



MEGHA INSTITUTE OF ENGINEERING AND TECHNOLOGY FOR WOMEN

(Approved by AICTE & Affiliated to JNTUH)

SY. NO. 7, EDULABAD (V), GHATKESAR (M), MEDCHAL (D), TELANGANA – 501301

Library Utilization – Login Register

April - 2018

S.No	Date	No. of Faculty/Staff Accessed	No. of Students accessed	Beyond working hours accessed	Total Users
1	2/4/18	7	27	0	34
2	3/4/18	4	45	0	49
3	4/4/18	5	58	0	43
4	6/4/18	3	40	0	44
5	7/4/18	5	58	0	63
6	9/4/18	3	60	0	63
7	10/4/18	7	27	0	34
8	11/4/18	0	28	0	28
9	12/4/18	1	30	0	31
10	13/4/18	1	15	0	16
11	16/4/18	0	16	0	16
12	17/4/18	0	9	0	9
13	18/4/18	1	21	0	22
14	19/4/18	0	15	0	15
15	20/4/18	1	22	0	23
16	21/4/18	0	24	0	24
17	23/4/18	0	21	0	21
18	24/4/18	0	38	0	38
19	26/4/18	0	21	0	21
20	27/4/18	0	21	0	21
21	28/4/18	0	16	0	16
22	30/4/18	0	9	0	9
	TOTAL	38	621	0	640

The Number Of The Library During The Month Of April In 2018 Were 621

The Number Of The Library During The Month Of April In 2018 Were 38.

Librarian


Coordinator


Principal
Megha Inst. of Engg. & Tech for Women
Edulabad, Ghatkesar (Mdl),
Medchal Dist-501 301



MEGHA INSTITUTE OF ENGINEERING AND TECHNOLOGY FOR WOMEN

(Approved by AICTE & Affiliated to JNTUH)

SY. NO. 7, EDULABAD (V), GHATKESAR (M), MEDCHAL (D), TELANGANA - 501301

Library Utilization – Login Register

May - 2018

S.No	Date	No. of Faculty/Staff Accessed	No. of Students accessed	Beyond working hours accessed	Total Users
1	1/5/18	0	3	0	3
2	2/5/18	0	0	0	0
3	3/5/18	0	0	0	0
4	4/5/18	0	2	0	2
5	5/5/18	0	3	0	3
6	7/5/18	0	1	0	1
7	8/5/18	0	0	0	0
8	9/5/18	0	0	0	0
9	10/5/18	0	1	0	1
10	11/5/18	0	1	0	1
11	14/5/18	0	0	0	0
12	15/5/18	0	2	0	2
13	16/5/18	0	0	0	0
14	17/5/18	0	0	0	0
15	18/5/18	0	0	0	0
16	19/5/18	0	0	0	0
17	21/5/18	0	0	0	0
18	22/5/18	0	2	0	2
19	23/5/18	0	0	0	0
20	24/5/18	0	0	0	0
21	29/5/18	0	0	0	0
22	30/5/18	0	0	0	0
23	31/5/18	0	0	0	0
	TOTAL	0	15	0	15

The Number Of The Library During The Month Of MAY In 2018 Were 15

The Number Of The Library During The Month Of MAY In 2018 Were 0

Librarian


Coordinator


Principal
Megha Inst. of Engg. & Tech for Women
Edulabad, Ghatkesar (Mdl),
Medchal Dist-501 301



MEGHA INSTITUTE OF ENGINEERING AND TECHNOLOGY FOR WOMEN

(Approved by AICTE & Affiliated to JNTUH)

SY. NO. 7, EDULABAD (V), GHATKESAR (M), MEDCHAL (D), TELANGANA - 501301

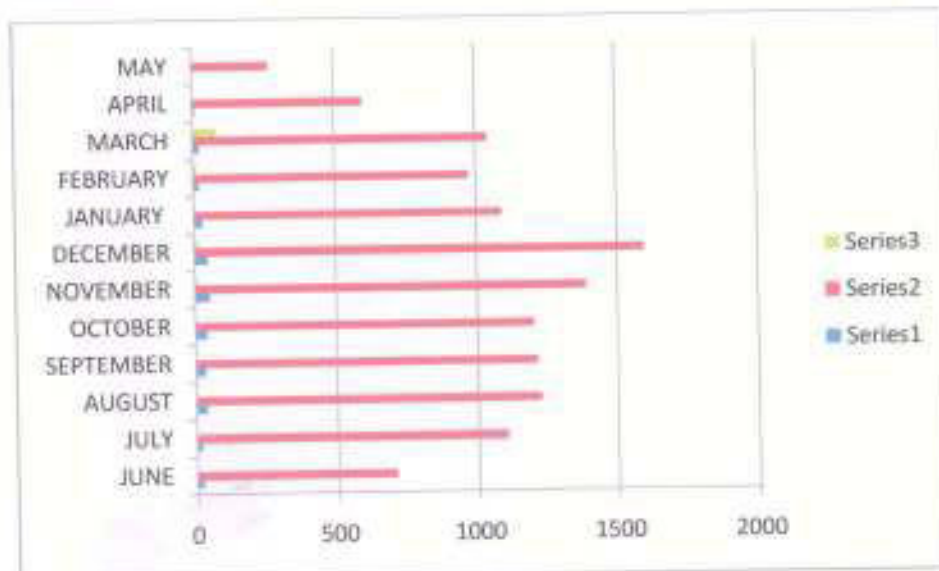
Library Utilization – Login Register

2016 – 2017

S.No	Month	No. of Faculty/Staff Accessed	No. of Students accessed	Beyond working hours accessed	Total Users
1	JUNE	23	707	1	730
2	JULY	20	1105	2	1125
3	AUGUST	37	1227	4	1264
4	SEPTEMBER	34	1214	0	1248
5	OCTOBER	41	1202	0	1243
6	NOVEMBER	52	1389	9	1447
7	DECEMBER	47	1597	13	1657
8	JANUARY	31	1091	5	1125
9	FEBRUARY	21	975	14	1010
10	MARCH	23	1042	85	1150
11	APRIL	9	600	1	610
12	MAY	3	269	4	276

Librarian


Coordinator




Principal
Megha Inst. of Engg. & Tech for Women
Edulabad, Ghatkesar (MdI).
Medchal Dist-501 301



MEGHA INSTITUTE OF ENGINEERING AND TECHNOLOGY FOR WOMEN

(Approved by AICTE & Affiliated to JNTUH)

SY. NO. 7, EDULABAD (V), GHATKESAR (M), MEDCHAL (D), TELANGANA - 501301

Library Utilization – Login Register

June - 2016

S.No	Date	No. of Faculty/Staff Accessed	No. of Students accessed	Beyond working hours accessed	Total Users
1	13/6/16	3	6	0	9
2	14/6/16	3	27	0	30
3	15/6/16	0	23	1	23
4	16/6/16	0	34	0	34
5	17/6/16	6	14	0	20
6	18/6/16	0	16	0	16
7	20/6/16	0	52	0	52
8	21/6/16	1	44	0	45
9	22/6/16	0	26	0	26
10	24/6/16	0	136	0	136
11	25/6/16	9	149	0	158
12	28/6/16	1	45	0	46
13	29/6/16	0	82	0	82
14	30/6/16	0	53	0	53
	TOTAL	23	707	1	730

The number of Students of the library during the month of **JUNE** in **2016** were 707 .

The number of staff of the library during the month of **JUNE** in **2016** were 23

Librarian


Coordinator


Principal
Megha Inst. of Engg. & Tech for Women
EduLabad, Ghatkesar (MdI),
Medchal Dist-501 301



MEGHA INSTITUTE OF ENGINEERING AND TECHNOLOGY FOR WOMEN

(Approved by AICTE & Affiliated to JNTUH)

SY. NO. 7, EDULABAD (V), GHATKESAR (M), MEDCHAL (D), TELANGANA - 501301

Library Utilization – Login Register

July - 2016

S.No	Date	No. of Faculty/Staff Accessed	No. of Students accessed	Beyond working hours accessed	Total Users
1	1/7/16	0	64	0	64
2	2/7/16	4	34	0	38
3	4/7/16	3	60	0	63
4	5/7/16	2	55	0	57
5	11/7/16	0	57	1	57
6	12/7/16	1	74	0	75
7	13/7/16	2	63	0	65
8	14/7/16	1	56	0	57
9	15/7/16	0	35	0	35
10	16/7/16	1	49	1	50
11	18/7/16	1	35	0	36
12	19/7/16	0	57	0	57
13	20/7/16	0	40	0	40
14	21/7/16	1	43	0	44
15	22/7/16	1	21	0	22
16	23/7/16	3	64	0	67
17	25/7/16	0	40	0	40
18	27/7/16	0	100	0	100
19	28/7/16	0	65	0	65
20	29/7/16	0	36	0	36
21	30/7/16	0	57	0	57
	TOTAL	20	1105	2	1125

The number of Students of the library during the month of **JULY** in **2016** were 1105.

The number of staff of the library during the month of **JULY** in **2016** were 20

Librarian


Coordinator


Principal
Megha Inst. of Engg. & Tech for Women
Edulabad, Ghatkesar (Md),
Medchal Dist-501 301



MEGHA INSTITUTE OF ENGINEERING AND TECHNOLOGY FOR WOMEN

(Approved by AICTE & Affiliated to JNTUH)

SY. NO. 7, EDULABAD (V), GHATKESAR (M), MEDCHAL (D), TELANGANA - 501301

Library Utilization – Login Register

August - 2016


S.No	Date	No. of Faculty/Staff Accessed	No. of Students accessed	Beyond working hours accessed	Total Users
1	2/8/16	2	50	1	52
2	3/8/16	3	66	0	69
3	4/8/16	1	47	0	48
4	5/8/16	0	5	0	5
5	6/8/16	0	41	0	41
6	8/8/16	4	54	0	58
7	9/8/16	0	55	0	55
8	10/8/16	1	66	0	67
9	11/8/16	4	63	0	67
10	12/8/16	0	49	0	49
11	16/8/16	7	48	0	55
12	17/8/16	3	23	0	26
13	19/8/16	2	10	0	12
14	20/8/16	0	28	0	28
15	22/8/16	0	73	0	73
16	23/8/16	2	195	0	197
17	26/8/16	1	111	0	112
18	27/8/16	3	80	0	83
19	29/8/16	2	73	0	75
20	30/8/16	2	67	3	69
21	31/8/16	0	23	0	23
	TOTAL	37	1227	4	1264

The number of Students of the library during the month of **AUGUST** in **2016** were 1227 .

The number of staff of the library during the month of **AUGUST** in **2016** were 37

Librarian


Coordinator


Principal
Megha Inst. of Engg. & Tech for Women
Edulabad, Ghatkesar (Mdl),
Medchal Dist-501 301



MEGHA INSTITUTE OF ENGINEERING AND TECHNOLOGY FOR WOMEN

(Approved by AICTE & Affiliated to JNTUH)

SY. NO. 7, EDULABAD (V), GHATKESAR (M), MEDCHAL (D), TELANGANA - 501301

Library Utilization – Login Register

Septembert - 2016

S.No	Date	No. of Faculty/Staff Accessed	No. of Students accessed	Beyond working hours accessed	Total Users
1	1/9/16	5	45	0	50
2	3/9/16	1	20	0	21
3	6/9/16	4	95	0	99
4	7/9/16	6	92	0	98
5	8/9/16	1	61	0	62
6	9/9/16	0	64	0	64
7	10/9/16	1	52	0	53
8	12/9/16	0	16	0	16
9	14/9/16	3	62	0	65
10	16/9/16	0	65	0	65
11	17/9/16	0	47	0	47
12	19/9/16	0	95	0	95
13	20/9/16	2	84	0	86
14	21/9/16	1	91	0	92
15	22/9/16	0	63	0	63
16	24/9/16	4	87	0	91
17	26/9/16	0	78	0	78
18	27/9/16	1	62	0	63
19	28/9/16	3	34	0	37
20	29/9/16	2	1	0	3
	TOTAL	34	1214	0	1248

The number of Students of the library during the month of **SEPTEMBER** in 2016 were 1214 .

The number of staff of the library during the month of **SEPTEMBER** in 2016 were 34

Librarian


Coordinator


Principal
Megha Inst. of Engg. & Tech for Women
Edulabad, Ghatkesar (Mdl),
Medchal Dist-501 301



MEGHA INSTITUTE OF ENGINEERING AND TECHNOLOGY FOR WOMEN

(Approved by AICTE & Affiliated to JNTUH)

SY. NO. 7, EDULABAD (V), GHATKESAR (M), MEDCHAL (D), TELANGANA - 501301

Library Utilization – Login Register

October - 2016

S.No	Date	No. of Faculty/Staff Accessed	No. of Students accessed	Beyond working hours accessed	Total Users
1	1/10/16	1	62	0	63
2	3/10/16	5	115	0	120
3	4/10/16	4	82	0	86
4	5/10/16	0	79	0	79
5	14/10/16	2	0	0	2
6	15/10/16	3	2	0	5
7	17/10/16	5	146	0	151
8	18/10/16	1	132	0	133
9	19/10/16	4	70	0	74
10	20/10/16	7	65	0	72
11	21/10/16	2	64	0	66
12	22/10/16	4	75	0	79
13	24/10/16	3	45	0	48
14	25/10/16	0	54	0	54
15	26/10/16	0	30	0	30
16	27/10/16	0	54	0	54
17	28/10/16	0	36	0	36
18	29/10/16	0	57	0	57
19	31/10/16	0	34	0	34
	TOTAL	41	1202	0	1243

The number of Students of the library during the month of **OCTOBER** in **2016** were 1202.

The number of staff of the library during the month of **OCTOBER** in **2016** were 41

Librarian


Coordinator


Principal
Megha Inst. of Engg. & Tech for Women,
Edulabad, Ghatkesar (Mdl),
Medchal Dist-501 301



MEGHA INSTITUTE OF ENGINEERING AND TECHNOLOGY FOR WOMEN

(Approved by AICTE & Affiliated to JNTUH)

SY. NO. 7, EDULABAD (V), GHATKESAR (M), MEDCHAL (D), TELANGANA - 501301

Library Utilization – Login Register

November - 2016

S.No	Date	No. of Faculty/Staff Accessed	No. of Students accessed	Beyond working hours accessed	Total Users
1	1/11/16	4	48	1	52
2	2/11/16	5	64	0	69
3	3/11/16	4	43	0	48
4	4/11/16	0	5	0	5
5	5/11/16	0	39	2	41
6	7/11/16	0	58	0	58
7	8/11/16	0	55	0	55
8	9/11/16	1	66	0	67
9	10/11/16	4	61	2	67
10	11/11/16	0	49	0	49
11	12/11/16	4	51	0	55
12	15/11/16	3	23	0	26
13	16/11/16	3	9	0	12
14	17/11/16	0	28	0	28
15	18/11/16	4	69	0	73
16	19/11/16	2	195	0	197
17	21/11/16	5	107	0	112
18	22/11/16	3	80	0	83
19	24/11/16	2	73	0	75
20	25/11/16	2	67	3	69
21	26/11/16	0	23	0	23
22	28/11/16	1	42	0	43
23	29/11/16	3	53	1	57
24	30/11/16	2	81	0	83
	TOTAL	52	1389	9	1447

The number of Students of the library during the month of **NOVEMBER** in 2016 were 1389.

The number of staff of the library during the month of **NOVEMBER** in 2016 were 52

Librarian


Coordinator


Principal
Megha Inst. of Engg. & Tech for Women
Edulabad, Ghatkesar (Mdl),
Medchal Dist-501 301



MEGHA INSTITUTE OF ENGINEERING AND TECHNOLOGY FOR WOMEN

(Approved by AICTE & Affiliated to JNTUH)

SY. NO. 7, EDULABAD (V), GHATKESAR (M), MEDCHAL (D), TELANGANA - 501301

Library Utilization – Login Register

December - 2016

S.No	Date	No. of Faculty/Staff Accessed	No. of Students accessed	Beyond working hours accessed	Total Users
1	1/12/16	5	43	2	50
2	2/12/16	1	20	0	21
3	3/12/16	8	91	0	99
4	5/12/16	6	92	0	98
5	6/12/16	1	60	1	62
6	7/12/16	0	64	0	64
7	8/12/16	3	50	0	53
8	9/12/16	0	16	0	16
9	10/12/16	2	62	1	65
10	12/12/16	0	65	0	65
11	13/12/16	1	46	0	47
12	14/12/16	0	95	0	95
13	15/12/16	2	84	0	86
14	16/12/16	1	90	1	92
15	17/12/16	0	63	0	63
16	19/12/16	4	85	2	91
17	20/12/16	0	78	0	78
18	21/12/16	1	61	1	63
19	22/12/16	3	34	0	37
20	23/12/16	1	2	0	3
21	26/12/16	0	55	0	55
22	27/12/16	1	84	2	87
23	28/12/16	0	94	0	94
24	29/12/16	4	124	2	130
25	30/12/16	1	26	1	28
26	31/12/16	2	13	0	15
	TOTAL	47	1597	13	1657

The number of Students of the library during the month of **DECEMBER** in 2016 were 1597 .

The number of staff of the library during the month of **DECEMBER** in 2016 were 47


Principal
Megha Inst. of Engg. & Tech for Women
Edulabad, Ghatkesar (Md),
Medchal Dist-501 301



MEGHA INSTITUTE OF ENGINEERING AND TECHNOLOGY FOR WOMEN

(Approved by AICTE & Affiliated to JNTUH)

SY. NO. 7, EDULABAD (V), GHATKESAR (M), MEDCHAL (D), TELANGANA - 501301

Library Utilization – Login Register

January - 2017


S.No	Date	No. of Faculty/Staff Accessed	No. of Students accessed	Beyond working hours accessed	Total Users
1	2/1/17	0	63	1	64
2	3/1/17	4	34	0	38
3	4/1/17	2	61	0	63
4	6/1/17	2	55	0	57
5	7/1/17	2	55	1	57
6	9/1/17	1	74	0	75
7	10/1/17	4	61	0	65
8	11/1/17	1	56	0	57
9	12/1/17	1	34	0	35
10	13/1/17	1	49	1	50
11	17/1/17	0	36	0	36
12	18/1/17	0	57	0	57
13	19/1/17	2	38	0	40
14	20/1/17	1	43	0	44
15	21/1/17	0	22	0	22
16	22/1/17	3	64	0	67
17	24/1/17	0	39	1	40
18	25/1/17	2	98	0	100
19	27/1/17	2	63	0	65
20	28/1/17	1	35	0	36
21	30/1/17	2	54	1	57
	TOTAL	31	1091	5	1125

The number of Students of the library during the month of **JANUARY** in 2017 were 1091 .

The number of staff of the library during the month of **JANUARY** in 2017 were 31

Librarian


Coordinator


Principal
Megha Inst. of Engg. & Tech for Women
Edulabad, Ghatkesar (Mdl),
Medchal Dist-501 301



MEGHA INSTITUTE OF ENGINEERING AND TECHNOLOGY FOR WOMEN

(Approved by AICTE & Affiliated to JNTUH)

SY. NO. 7, EDULABAD (V), GHATKESAR (M), MEDCHAL (D), TELANGANA - 501301

Library Utilization – Login Register

February - 2017

S.No	Date	No. of Faculty/Staff Accessed	No. of Students accessed	Beyond working hours accessed	Total Users
1	1/2/17	1	38	0	39
2	2/2/17	0	56	0	56
3	3/2/17	0	42	0	42
4	4/2/17	2	28	1	31
5	6/2/17	0	35	0	35
6	7/2/17	0	75	0	75
7	8/2/17	1	86	2	89
8	11/2/17	1	21	0	22
9	13/2/17	0	90	0	90
10	14/2/17	2	62	0	64
11	16/2/17	0	45	0	45
12	17/2/17	0	37	1	38
13	18/2/17	4	79	0	83
14	20/2/17	2	45	0	47
15	21/2/17	4	39	0	43
16	22/2/17	3	45	0	48
17	23/2/17	0	37	0	37
18	25/2/17	0	12	0	12
19	27/2/17	0	51	10	61
20	28/2/17	1	52	0	53
	TOTAL	21	975	14	1010

The number of Students of the library during the month of **FEBRUARY** in 2017 were 975 .

The number of staff of the library during the month of **FEBRUARY** in 2017 were 21

Librarian


Coordinator


Principal
Megha Inst. of Engg. & Tech for Women
Edulabad, Ghatkesar (Med),
Medchal Dist-501 301



MEGHA INSTITUTE OF ENGINEERING AND TECHNOLOGY FOR WOMEN

(Approved by AICTE & Affiliated to JNTUH)

SY. NO. 7, EDULABAD (V), GHATKESAR (M), MEDCHAL (D), TELANGANA - 501301

Library Utilization – Login Register

March - 2017


S.No	Date	No. of Faculty/Staff Accessed	No. of Students accessed	Beyond working hours accessed	Total Users
1	1/3/17	0	34	4	38
2	2/3/17	0	32	0	32
3	3/3/17	0	37	2	39
4	4/3/17	0	69	1	70
5	6/3/17	5	74	11	90
6	7/3/17	1	35	0	36
7	8/3/17	0	34	2	36
8	9/3/17	0	48	3	51
9	10/3/17	4	47	0	51
10	11/3/17	0	9	2	11
11	13/3/17	0	40	1	41
12	14/3/17	0	29	2	31
13	15/3/17	2	58	0	60
14	16/3/17	0	44	0	44
15	17/3/17	1	38	5	44
16	18/3/17	0	11	0	11
17	20/3/17	3	68	0	71
18	21/3/17	0	28	6	34
19	22/3/17	1	57	9	67
20	23/3/17	0	42	2	44
21	24/3/17	2	49	3	54
22	25/3/17	1	37	0	38
23	27/3/17	1	39	6	46
24	28/3/17	1	22	0	23
25	30/3/17	1	35	18	54
26	31/3/17	0	26	8	34
	TOTAL	23	1042	85	1150

The number of Students of the library during the month of **MARCH** in **2017** were 1042 .

The number of staff of the library during the month of **MARCH** in **2017** were 23

Librarian


Coordinator


Principal
Megha Inst. of Engg. & Tech for Women
Edulabad, Ghatkesar (Md),
Medchal Dist-501 301



MEGHA INSTITUTE OF ENGINEERING AND TECHNOLOGY FOR WOMEN

(Approved by AICTE & Affiliated to JNTUH)

SY. NO. 7, EDULABAD (V), GHATKESAR (M), MEDCHAL (D), TELANGANA - 501301

Library Utilization - Login Register

April - 2017


S.No	Date	No. of Faculty/Staff Accessed	No. of Students accessed	Beyond working hours accessed	Total Users
1	1/4/17	0	4	0	4
2	3/4/17	4	60	0	64
3	6/4/17	0	39	0	39
4	7/4/17	0	33	0	33
5	8/4/17	0	28	1	29
6	10/4/17	2	17	0	19
7	11/4/17	0	23	0	23
8	12/4/17	1	19	0	20
9	13/4/17	0	4	0	4
10	15/4/17	1	51	0	52
11	17/4/17	1	20	0	21
12	18/4/17	0	37	0	37
13	19/4/17	0	31	0	31
14	20/4/17	0	29	0	29
15	21/4/17	0	33	0	33
16	22/4/17	0	25	0	25
17	24/4/17	0	30	0	30
18	25/4/17	0	10	0	10
19	26/4/17	0	25	0	25
20	27/4/17	0	33	0	33
21	28/4/17	0	24	0	24
22	29/4/17	0	25	0	25
	TOTAL	9	600	1	610

The number of Students of the library during the month of **April** in 2017 were 600 .

The number of staff of the library during the month of **April** in 2017 were 9

Librarian


Coordinator


Principal
Megha Inst. of Engg. & Tech for Women
Edulabad, Ghatkesar (Md),
Medchal Dist-501 301



MEGHA INSTITUTE OF ENGINEERING AND TECHNOLOGY FOR WOMEN

(Approved by AICTE & Affiliated to JNTUH)

SY. NO. 7, EDULABAD (V), GHATKESAR (M), MEDCHAL (D), TELANGANA - 501301

Library Utilization – Login Register

May - 2017


S.No	Date	No. of Faculty/Staff Accessed	No. of Students accessed	Beyond working hours accessed	Total Users
1	1/5/17	0	13	0	13
2	2/5/17	0	54	1	55
3	3/5/17	0	14	0	14
4	4/5/17	1	22	0	23
5	5/5/17	0	27	0	27
6	6/5/17	0	8	0	8
7	8/5/17	0	28	0	28
8	9/5/17	0	14	0	14
9	10/5/17	1	8	0	9
10	15/5/17	0	15	3	18
11	16/5/17	0	17	0	17
12	17/5/17	0	12	0	12
13	18/5/17	1	0	0	1
14	19/5/17	0	6	0	6
15	20/5/17	0	23	0	23
16	22/5/17	0	3	0	3
17	23/5/17	0	2	0	2
18	26/5/17	0	1	0	1
19	29/5/17	0	2	0	2
	TOTAL	3	269	4	276

The number of Students of the library during the month of **MAY** in **2017** were 269.

The number of staff of the library during the month of **MAY** in **2017** were 3

Librarian


Coordinator


Principal
Megha Inst. of Engg. & Tech for Women
Edulabad, Ghatkesar (Mdl),
Medchal Dist-501 301

S. No.	Name of the User	Roll No. / Designation	Year / Branch	Time In	Time Out	Initials
1.	B. Harish	Asst. Prof	Civil	10:01	10:40	Har
2.	M. Venugopal	Prof	ECE	10:10	10:30	MM
3.	K. Rajubharan	Asst. prof	CSE	10:20	11:00	KR
4.	S. Anitha	Asst. prof	ECE	10:30	11:00	SA
5.	M. Sumanjalei	Asst. prof	CSE	10:10	11:30	MS
6.	P. Anjaraiah	Asst. prof	ECE	10:14	10:50	PA
7.	G. Lakshmi Devi	Asst. prof	ECE	10:30	11:00	GD
8.	B. Veeranna	Asst. prof	ECE	11:00	12:00	BV
9.	K. Rajashree Rani	Asst. prof	Civil	11:25	12:45	KR
10.	D. Paschalayamma	Asst. prof	CSE	11:30	11:35	DP
11.	S. Venkateswara Rao	Asst. prof	CSE	11:30	11:45	SV

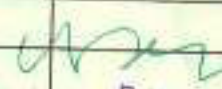
Principal
 Megha Inst. of Engg. & Tech for Women
 Edulabad, Ghatkeer (Md),
 Medchal Dist-501 301

REGISTER

2/03/21

139

S. No.	Name of the User	Roll No. / Designation	Year / Branch	Time In	Time Out	Initials	Remarks
1.	B. Sundhar	Asst. prof	Civil	9:30	9:45	f	
2.	B. Narech	Lec	CSE	9:40	10:10	Narech	
3.	V. Pradyumna	Asst. Prof	TPO	10:00	10:50	Prady	
4.	Mr. S. Surendra	Asst. prof	ECE	10:20	10:55	sure	
5	Murali Mohan	Asst. prof	H&S	10:25	10:50	Mf	


Principal
Megha Inst. of Engg. & Tech for Women
Edulabad, Ghatkotas (Distt)
Medchal Dist-501 301

1411

3/03/21

GATE LIBR

S. No.	Name of the User	Roll No. / Designation	Year / Branch	Time In	Time Out	Initials
1	A. Sandhya	Asst prof	CSE	9:35	9:45	S-L
2	J. Achin	Asst. prof	M.S.	9:40	9:50	J
3	B. Harish	Asst Prof	Civil	9:45	9:59	Harish
4	K.M. Venugopal	prof	ECE	9:50	10:10	W
5	N. S. Sudharani	Asst prof	CSE	10:00	10:30	S
6	N. Mustafa Mohan	Asst prof	M.S.	10:00	10:10	M
7	B. Veeranna	Asst-prof	ECE	10:00	11:30	V
8	D. Rajshreea Parth	Asst prof	Civil	10:05	11:05	R
9	S. Anitha	Asst. prof	ECE	10:45	11:00	A
10	K. Raj Kumar	Asst prof	M.S.	10:50	11:30	K
11	B. Samaisala	Asst. prof	MBA	10:00	10:45	B
12	P. Madhu Babu	Asst. Prof	MBA	10:30	12:00	P
13	S. Venkateswala Rao	Asst Prof	CSE	11:40	11:59	S
14	R. Srinivasa	Asst Prof	Comm	11:50	12:10	R
15	A. Siddeshwar	Asst. prof	M.S.	12:20	1:00	A

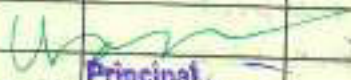
Principal
 Megha Inst. of Engg. & Tech. for Women
 Edulabad, Ghatkesar (Midi),
 Medchal Dist-501 301

REGISTER

4/09/21

141

S. No.	Name of the User	Roll No. / Designation	Year / Branch	Time In	Time Out	Initials	Remarks
1.	A. Sankhya	Asst prof	CSE	9:30	10:00	SS	
2.	Murali Mahan	Asst prof	H&P	10:00	10:30	M	
3.	A. Sankhya	Asst prof	CSE	9:50	10:00	S	
4.	B. Sannalab	Asst prof	MBA	10:00	10:16	S	
5.	Dr. K. Madhu Babu	ASST prof	MBA	10:28	9:30	madhy	


Principal
Maha Inst of Engg. & Tech for Women
Edutabat, Ghatkesar (Mach)
Medchal Dist-501 301

142

5/03/21

GATE LIBRA

S. No.	Name of the User	Roll No. / Designation	Year / Branch	Time In	Time Out	Initials
1	Prem Chand	Asst prof	CSE	9:40	10:30	Prem
2	B. Veeranna	Asst prof	CSE	10:30	11:00	Veer
3	B. Harish	Asst Prof	Civit	9:42	10:15	Harish
4	M. Venugopal	prof	ECE	9:50	11:10	V
5	A. Sandhya	Asst prof	CSE	10:00	10:09	S
6	S. Anitha	Asst. prof	ECE	10:00	10:30	A
7	A. Rangarao	Asst prof	ECE	10:00	11:10	A
8	A. Rajashekhara Prasad	Asst prof	Civit	10:15	11:30	VR
9	B. Sathosh Lakshmi	"	M&S	10:19	11:00	B
10	R. Veera Reddy	Asst prof	CSE	10:20	11:05	R
11	S. Akh	Asst Prof	CSE	10:30	11:00	A
12	M. Sumanjali	Asst prof	CSE	10:40	11:20	S
13	B. Shriisha	Asst prof	ECE	11:30	12:15	B
14	B. Naveesh	lec	CSE	11:40	12:00	N
15	S. Venkateshwar Rao	Asst Rao	CSE	11:50	12:10	S
16	K. Raju	Asst Prof	ECE	12:00	12:30	K
17	Shahid Syed	Asst pro	M&S	12:10	12:30	S

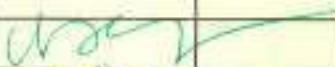
Principal
 Megha Inst. of Engg & Tech for Women
 Edulabad, Ghatkesar (M.D.),
 Medchal Dist-501 301

REGISTER

6/03/21

143

S. No.	Name of the User	Roll No. / Designation	Year / Branch	Time In	Time Out	Initials	Remarks
1.	A. Ranga Rao	Asst prof	ECE	9:30	10:00	Ra	
2.	S. Venkateshwar Rao	Asst prof	CSE	9:40	10:10	Ven	
3.	K. Raju	Asst prof	ECE	9:40	10:00	Ra	
4.	Muxali Mohan	Asst prof	H4S	9:40	10:20	Mh	
5.	A. Sandhya	Asst prof	CSE	9:50	10:00	Sa	
6.	G. Santosh Kumar	Asst prof	ECE	9:57	10:15	GK	
7.	P. Anjiah	Asst prof	ECE	10:00	10:28	An	
8.	B. Vellanna	"	EEE	10:10	10:58	Vell	
89.	A. Sandhya	Asst prof	CSE	10:15	10:30	Sa	
10.	Y. Pradyumna	Asst Prof	TPO	10:20	11:20	Prad	
11.	B. Sudhakar	Asst. prof	Civil	10:59	11:15	Su	
12.	S. Anitha	Asst prof	ECE	11:00	11:15	An	
13.	Dr. U.G.S. Venkesh	Prof	CSE	11:05	11:50	U	
14.	K. Mahesh K	Asst prof	MBA	11:05	12:40	Ka	
15.	S. Venkateswara Rao	Asst. Prof	CSE	11:20	11:40	Ven	
16.	Mr. S. Surenbra	Asst prof	ECE	11:25	11:45	Su	
17.	O. Chaitanya Rao	Asst prof	H4S	11:50	12:30	Ch	


 Megha Inst. Principal
 Megha Inst. of Engg. & Tech for Women
 Edu. Medchal Dist-501 301
 Medchal Dist-501 301

144

8/03/21

GATE LIBRA

S. No.	Name of the User	Roll No. / Designation	Year / Branch	Time In	Time Out	Initials
1)	Dr. K. Madhu Babu	Asst. prof	MBA	9:42	11:00	Madhu
2.	B. Harish	Asst. Prof	Civil	9:45	10:50	Harish
3.	T.S. Veeranna	Asst. prof	EEE	10:50	11:15	Veey
4.	D. Rajalakshmi Reddy	Asst. Prof	Civil	10:59	11:30	VPR
5	M. Venugopal	Prof	ECE	10:59	11:10	V
6	Joachim	Asst. Prof	MES	10:00	10:20	J
7.	K. Raju	Asst. Prof	ECE	10:59	11:00	R
8.	G. Shrinika	Asst. Prof	Civil	10:40	11:00	Shrinika
9.	S. Santosh Kumar	Asst. Prof	EEE	10:45	11:18	S
10	S. Venkateswara Rao	Asst. Prof	MES	10:50	11:20	V
11.	B. Rammalath	Asst. Prof	MBA	10:56	11:16	R

Principal

Megha Inst. of Engg. & Tech for Women
 Edulabad, Ghatkesar (Mdt)
 Medchal Dist-501 301

REGISTER

9/03/21

145

S. No.	Name of the User	Roll No. / Designation	Year / Branch	Time In	Time Out	Initials	Remarks
1.	A. Sankhya	Asst prof	CSE	10:40	10:00	S.P.	
2.	K. Rupa	Asst	ECE	10:05	10:28	R.P.	
3.	Murali Mahan	Asst prof	ITIS	10:10	10:20	M.M.	
4.	Dr. K. Madhu Babu	Asst prof	MBA	10:11	10:40	M.B.	
5.	M. Vasuappa	Asst prof	ECE	10:20	10:50	V.V.	
6.	P. Harish	Asst prof	Civil	10:30	10:45	H.H.	
7.	A. Sankhya	Asst. prof	CSE	10:30	10:50	S.P.	
8.	Tejani	Asst. prof	CSE	10:30	10:50	T.J.	
9.	G. Shristha	Asst. prof	Civil	10:45	11:10	S.S.	

[Signature]

Principal

Megha Inst. of Engg. & Tech for Women
 Edulabad, Ghatkesar (Midi),
 Medchal Dist-501 301

S. No.	Name of the User	Roll No. / Designation	Year / Branch	Time In	Time Out	Initials
1.	B. Harish	Asst Prof	Civil	9:40	9:58	Harish
2.	M. Venk Gopal	prof	ECE	9:50	10:10	V
3.	N. Sudharani	Asst Prof	CSE	10:00	10:30	S
4.	P. Anandiah	Asst prof	CSE	10:00	11:00	A
5.	Raman Rao	Asst prof	MBA	09:48	10:15	Rao
6.	S. Anitha	Asst prof	ECE	9:50	10:00	Anitha
7.	B. Veeranna	Asst. prof	ECE	10:00	10:45	Ve
8.	K. Rajeswar Reddy	Asst. prof	Civil	10:15	11:30	VR
9.	K. Raju	Asst. Prof	CSE	10:20	11:00	R
10.	R. Veera Reddy	Asst. prof	CSE	10:20	11:05	R
11.	A. Kanakya	Asst. prof	CSE	10:20	11:00	K
12.	B. Shiksha	Asst. prof	ECE	10:30	11:30	B
13.	B. Naveesh	Asst	CSE	10:40	11:00	N
14.	S. Venkateswara Rao	Asst prof	ECE	10:50	11:20	S
15.	K. Srinivas	Asst Prof	Civil	10:55	11:25	K
16.	A. Siddeshwar	Asst. prof	Civil	11:30	12:10	A

Megha Inst. of Engg. & Tech
 Edutabad, Ghatakpur (India),
 Medical Diet 501 301

REGISTER

12/03/21

147

S. No.	Name of the User	Roll No. / Designation	Year / Branch	Time In	Time Out	Initials	Remarks
1.	B. Sudhakar	Asst. prof	Civil	9:30	9:45	S	
2.	Y. Pradyumna	Asst. prof	TPO	9:50	10:30	Prod	
2	Muxali Mohan	Asst. prof	H&S	10:00	10:20	M	
4.	R. Veerababu	Asst. prof	CSE	10:10	10:40	V	
5.	P. Anjiah	Asst. prof	ECE	10:20	10:56	A-25	
6.	A. Sundhya	Asst. prof	CSE	10:25	10:40	S	
7	B. Veeranna	Asst. prof	ECE	11:00	11:45	V	

Principal
 Megha Inst. of Engg & Tech for Women
 Edulabad, Ghatkesar (Md),
 Medchal Dist-501 301

S. No.	Name of the User	Roll No. / Designation	Year / Branch	Time In	Time Out	Initials
1.	B. Gammalath	Asst. prof	MBA	9:30	9:46	BT
2)	Dr. K. Madhu Babu	Asst. prof	MBA	9:47	9:50	Madhu
3	A. Ramganao	Asst. prof	ECE	9:50	10:10	A
4)	B. Veeranna	Asst. prof	EEE	10:10	10:30	Veey
4 5)	Shah Syed	Asst. prof	H. Eng	10:00	10:00	Sy
6	Pram Chand	Asst. prof	CSE	10:10	10:30	Pram
7	Mr. S. Surendra	Asst. prof	ECE	10:50	11:20	S
8.	B. Harish	Asst. Prof	Civil	10:55	11:31	Harish
9.	M. Venugopal	prof	ECTE	10:59	11:20	V
10.	D. Rajashekar Prasad	Asst. prof	Civil	11:45	12:10	VP

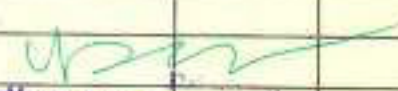
Principal
 Megha Inst. of Engg. & Tech for Women
 Edulabad, Ghatkesar (Md),
 Medchal Dist-501301

REGISTER

15/03/21

149

S. No.	Name of the User	Roll No. / Designation	Year / Branch	Time In	Time Out	Initials	Remarks
1)	B. Sumanah	Asst Prof	MBA	9:30	9:45	SB	
2)	B. Veeranna	Asst Prof	EEE	9:40	10:00	Ueul	
3)	Dr. H. Venkatesh	Prof	CSE	9:45	10:20	HV	
4)	G. Santosh Kumar	Asst Prof	EEE	9:56	10:25	G.S.K.	
5)	A. Sundhya	Asst Prof	CSE	10:00	10:00	S.P.	
6)	B. Santhosh Kumar	Asst Prof	HSS	10:04	10:35	BSK	
7)	B. Harish	Asst Prof	Civil	10:05	10:40	Harish	
8)	M. Venugopal	Asst Prof	ECE	10:10	11:00	Ueul	
9)	B. Natesh	Lec	CSE	11:00	11:20	Natesh	
10)	Murali Mohan	Asst Prof	HSS	11:05	11:45	M.M.	
11)	Shahid Syed	Asst Prof	HSS	11:10	11:50	Shahid	
12)	D. Rajashankar Reddy	Asst Prof	Civil	11:10	11:40	Reddy	
13)	S. Venkateshwar Rao	Asst Prof	CE	11:50	12:20	S.V.R.	
14)	A. Siddhanta	Asst Prof	IT	12:30	1:00	A.S.	


 Megha Inst. of Technology
 Egulabad, Ghatkesar, Medchal
 Medchal Dist-501 301

16/03/21

GATE LIBR

S. No.	Name of the User	Roll No. / Designation	Year / Branch	Time In	Time Out	Initials
1.	B. Harish	Asst. Prof	Civil	9:30	10:10	Harish
2.	B. Veeranna	Asst. prof	R.E.E	10:10	10:40	veer
3)	B. Senthakar	Asst. prof	Civil	9:39	10:01	S
4)	Dr. K. G. S. Venkatesh	Prof	CSE	9:40	10:20	K
5)	R. Veera Reddy	Asst. prof	CSE	9:40	9:55	R. Veer
6.	Y. Pradyumn	Asst. Prof	TPO	9:50	10:40	Prad
7.	Joaquin	Asst. prof	M.S.	9:52	9:55	J
8	S. Akshita	Asst. Prof	CSE	10:00	10:20	Akshita
9.	A. Rajashekar Reddy	Asst. prof	Civil	10:05	11:30	VR
10)	M. Venkatesh Gopal	prof	E.S.E	10:50	11:20	VR

Principal
 Megha Inst. of Engg. & Tech for Women
 Edutabad, Ghantasalar (Md)
 Medchal Dist-501 304

S. No.	Name of the User	Roll No. / Designation	Year / Branch	Time In	Time Out	Initials	Remarks
1.	B. Harish	Asst prof	Civil	9:30	10:00	Harish	
2.	D. K. S. Venush	Asst prof	CSE	9:35	10:00	Venush	
3.	P. Venkatesh	Asst prof	CSE	9:40	10:10	Venush	
4.	S. Abhila	Asst prof	CSE	9:50	10:30	Abhila	
5.	Mr. S. Suresh	Asst prof	ECE	10:00	10:30	Suresh	
6.	P. Anjaneh	Asst. prof	ECE	10:00	10:37	Anjaneh	
7.	B. Venanna	Asst prof	ECE	10:10	10:30	Venanna	
8.	G. Sathish Kumar	Asst prof	ECE	10:40	11:10	Sathish	
9.	B. Sathish	Asst prof	Civil	10:40	11:10	Sathish	
10.	V. Pradyumn	Asst prof	TPO	10:55	11:10	Pradyumn	
11.	S. Venkateshwararao	Asst Prof	CSE	11:00	11:50	Venush	
12.	Murali Mohan	Asst prof	HRS	11:05	11:55	Murali	
13.	Joseph	Asst prof	HRS	11:10	11:40	Joseph	
14.	D. Rajarajkumar Reddy	Asst prof	Civil	11:15	11:45	Rajaraj	
15.	B. Naveesh	lec	CSE	11:20	12:00	Naveesh	
16.	B. Sreejisha	Asst prof	ECE	12:00	12:50	Sreejisha	
17.	M. Purnajali	Asst. prof	CSE	12:55	1:25	Purnajali	
18.	K. Srinivas	Asst prof	Civil	1:00	1:30	Srinivas	

Principal
Megha Inst. of Engg. & Tech for Women
Edutabad, Ghatesar (Mtn),
Medchal Dist-501 301

150

152

18/03/21

GATE L

S. No.	Name of the User	Roll No. / Designation	Year / Branch	Time In	Time Out	In
1)	Dr. K. Madhu Babu	Asst. prof	MBA	9:30	10:00	
2.	B. Harish	Asst. Prof	Civil	9:40	10:25	
3.	Jochini	Asst. Prof	A&S	9:52	10:30	
4.	B. Veeranna	Asst. prof	E. E. E	10:30	11:00	
5.	D. Rajashekar Reddy	Asst. prof	Civil	10:45	11:10	
6	M. Venugopal	prof	E.C.E	10:50	11:20	
7.	A. Siddeshwar	Asst. prof	IT	11:30	12:00	

Principal
 Megha Inst. of Engg & Tech for Women
 Edulabad, Ghatkesar (Md),
 Medchal Dist-501 301

REGISTER

19/03/21

153

S. No.	Name of the User	Roll No. / Designation	Year / Branch	Time In	Time Out	Initials	Remarks
1.	G. Kantesh Kumar	Asst. Prof	EEE	9:34	9:49	G.K	
2.	B. Sammalah	Asst. Prof	MBA	9:35	9:50	B.S	
3.	B. Veeranna	Asst. Prof	EEE	10:15	10:58	B.V	
4.	Samalhya	Asst. Prof	CSE	10:20	10:40	S.L	
5.	Murali Mohan	Asst. Prof	MES	10:30	11:00	M.M	
6.	Shabir Syed	Asst. Prof	MES	11:05	12:05	S.S	
7.	Mr. S. Surendra	Asst. Prof	EEE	11:20	11:55	S.S	

Principal
 Megha Inst. of Engg. & Tech for Women
 Edulabad, Ghankesar (M.H.),
 Medchal Dist-501 301

157

20/03/21

GATE LIB

S. No.	Name of the User	Roll No. / Designation	Year / Branch	Time In	Time Out	Initials
1.	B. Harish	Asst. Prof	Civil	9:32	10:15	Hau
2.	B. Veeranna	Asst. prof	ECE	10:20	11:00	Ull
3.	D. Rajashekar Reddy	Asst. prof	Civil	10:45	11:30	VMP
4.	Dr. K. Anand	Asst. prof	MBA	10:35	11:20	Ma
5.	Prem Chand	Asst prof	CSE	9:35	10:40	Pre
6.	S. Akhila	Asst. prof	CSE	9:40	10:00	Akh
7.	B. Shiksha	Asst. prof	ECE	9:55	10:30	Sh
8.	B. Namini	Asst. prof	CSE	9:55	10:50	Nam
9.	M. Venk Gopal	A. prof	E.C.E	10:00	10:20	VG
10.	S. Venkateswar Rao	Asst Prof	CSE	10:20	10:50	S
11.	B. Senthosh Lalini	Asst prof	M & S	12:04	1:00	SL

Principal
 Megha Inst. of Engg. & Tech for Women
 Edulabad, Ghatkesar (Midi)
 Medical Diet-501 301

REGISTER

22/03/21

155

S. No.	Name of the User	Roll No. / Designation	Year / Branch	Time In	Time Out	Initials	Remarks
1.	B. Sudhekar	Asst. Prof	Civil	9:30	9:45	f	
2.	B. Naresh	Lec	CSE	9:40	10:10	Nare	
3)	Dr. K. Madhu Babu	Asst. Prof	MBA	10:00	11:00	Madhu	
4.	A. Sandhya	Asst. Prof	CSE	10:10	10:30	S	
5.	O. Siddhanta Das	Asst. Prof	MBA	10:40	11:10	Das	
6.	Murali Mohan	Asst. Prof	MBA	10:45	11:20	M	

Principal
Department of Engg. & Tech for Women
Educlab, Ghatkesar Road,
Medchal Dist-501 301

S. No.	Name of the User	Roll No. / Designation	Year / Branch	Time In	Time Out	Initials
1.	V. Pradyumna	Asst. Prof	TPO	9:45	10:20	PPD
2.	K. Smirvay	Asst. Prof	Civil	10:00	10:35	SM
3.	Joachim	Asst. Prof	MES	10:05	10:40	J
4.	G. Suresh Kumar	Asst. Prof	ECE	10:16	10:38	GSK
5.	Mr. S. Surendra	Asst. Prof	ECE	10:20	10:40	SS
6.	B. Harish	Asst. Prof	Civil	10:28	11:05	Harish
7.	B. Veeranna	Asst. Prof	ECE	11:10	11:45	BV
8.	D. Rajashree Reddy	Asst. Prof	Civil	11:45	12:10	VR
9.	M. Venugopal	Prof	ECE	11:50	12:20	MV

Principal
 Megha Inst. of Engg & Tech for Women
 Edulabad, Ghatkesar (A.D.),
 Medchal Dist-501 301

S. No.	Name of the User	Roll No. / Designation	Year / Branch	Time In	Time Out	Initials	Remarks
1.	B. Vellanna	Asst. Prof	EEE	9:36	10:00	WV	
2.	A. Sandhya	'u	CE	9:40	10:00	S	
3.)	Dr. K.G.S. Venkatesh	Prof	CE	9:50	10:20	K	
4.)	A. Rangarao	Asst. Prof	ECE	9:53	10:10	A	
5.	Murali Mohan	Asst. Prof	H&F	9:55	10:20	M	
6.	B. Harish	Asst. Prof	Civil	10:00	10:40	H	
7.	B. Rajashekar Reddy	Asst. Prof	Civil	10:05	10:50	R	
8.	G. Srinivas Kumar	Asst. Prof	EEE	11:00	11:10	S	
9.	Raman Raju	Asst. Prof	MBA	11:10	11:35	R	
10.	S. Anil	Asst. Prof	ECE	12:00	12:30	A	
11.	K. Manish	Asst. Prof	MBA	12:10	2:10	K	
12.	V. Pradyumn	Asst. Prof	TPO	12:10	1:00	V	
13.	S. Venkateshwar Reddy	Asst. Prof	CE	12:20	12:50	S	
14.	B. Sammalah	Asst. Prof	MBA	1:00	1:30	B	
15.	B. Vellanna	Asst. Prof	EEE	09:00	1:30	V	
15.	S. Harish Syam	Asst. Prof	H&F	2:00	2:30	S	

Principal
 Megha Inst. of Engg. & Tech for Women
 Edulabad, Ghatkesar (Mull.)
 Medchal Dist-501 301

25/03/21

GATE LI

154

S. No.	Name of the User	Roll No. / Designation	Year / Branch	Time In	Time Out	Initial
1.	B. Harish	Asst Prof	Civil	9:39	10:18	Ma
2.	B. Santhosh Kumar	Asst prof	K.P.S	9:40	10:00	B
3.	P. Anjiah	Asst. prof	ECE	9:50	10:20	A
4.)	Dr. K. Madhu Babu	ASST prof	MBA	9:59	11:30	ma
5.)	B. Verranna	Asst. prof	ECE	11:30	12:00	12
6.)	D. Rajashankar Reddy	Asst. prof	Civil	11:45	12:15	W
7.	M. Venugopal	prof	ECE	11:50	12:10	V
8.	A. Siddeshwar	Asst. prof	IT	12:20	1:00	AS

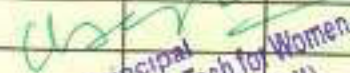
Principal
 Megha Inst. of Engg. & Tech. for Women
 Edulabad, Ghosla (M.D.),
 Medchal Dist-501 501

REGISTER

26/03/21

154

S. No.	Name of the User	Roll No. / Designation	Year / Branch	Time In	Time Out	Initials	Remarks
1.	G. Santosh Kumar	Asst prof	EEE	9:42	10:16	GSK	
2.	B. Venanna	Asst prof	FEE	10:00	10:25	VVF	
3.	A. Sandhya	Asst prof	CSE	10:00	10:20	S	
4.	M. sudhagani	Asst prof	CSE	10:20	10:50	S	
5.	Murali Mohan	Asst prof	EIE	10:35	11:00	M	


Principal
Megha Inst. of Engg. & Tech for Women
Edulabadi Ghatkesar (Wd).
Medchal Dist-501 301

27/03/21

GATE LIB

S. No.	Name of the User	Roll No. / Designation	Year / Branch	Time In	Time Out	Initials
1.	Jyothsna	Asst Prof	H&S	9:30	10:20	J
2.	B. Harish	Asst Prof	Civil	9:45	10:31	Harish
3.	S. Akula	Asst Prof	CSE	10:00	10:15	Akula
4.	B. Sammalath	Asst Prof	MBA	10:05	10:26	B
5.	Mrs. Surenthra	Asst Prof	ECE	10:10	10:45	S
6.	Masini Kumari	Asst Prof	H&S	10:20	11:40	M
7.	B. Veeranna	Asst Prof	ECE	11:45	12:15	B
8.	D. Rajashree Reddy	Asst Prof	Civil	11:59	12:20	D
9.	M. Venugopal	Prof	ECE	12:00	12:20	M
10.	B. Sankar Lakshmi	Asst Prof	H&S	12:30	1:00	B
11.	S. Venkateshwar Rao	Asst Prof	CSE	12:40	1:20	S

Principal
 Megha Inst. of Engg. & Tech for Women
 Edulabad, Ghatakosa (Dist.)
 Medchal Dist-501 301

REGISTER

S. No.	Name of the User	Roll No. / Designation	Year / Branch	Time In	Time Out	Initials	Remarks
27	P. Soujanya	19RPIA0558	B.Tech 1 st Year				
28	B. Balarama	18RPIA0555	"	12:20			
29	M. Kalyani	18RPIA0539	B.Tech 2 nd Year	1:00	4:00	Mika	Mika
30	Y. Shireesha	18RPIA0554	"	"		Shi	
31	Hanika	18RPIA0541	"	"			H
32	Rishika	18RPIA0501	"	"			R
33	B. Vidya	18RPIA0512	"	"			Vidya
34	B. Jahnvi	18RPIA0506	"	"			Jahnvi
35	Supriya	18RPIA0551	"	"			S
36	Deekshitha	18RPIA0538	"	"			D
37	Ankeetha Jha	16RPIA0406	4 th yr	"			A
38	K. Saugath	18RPIA0526	2 nd yr	"			S
39	P. Nisha sedha	19RPIA0437	2 nd yr	1:30			N
40	Verdaxm	106	"	"			V
41	A. Panya	" 401	"	2:00			P
42	Farheen	503	CSE II	2:30	3:18		F
43	K. Samyuktha	18RPI06	Civil III	2:50			S
44	P. Gayathri	18RPIA0539	CSE II	3:00	3:30		G
45	N. Pavani	537	"	3:00	3:30		P
46	V. Sushishna	17RPIA0411	ECE III rd	3:10			S
47	Y. Akhila	" 442	"	"			A
48	P. Deepika	17RPIA0435	"	"			D
49	K. Aparna	423	"	"			A
50	A. Athalya	403	"	"			A
51	B. Tejaswan	406	"	"			T
52	P. Bhavani	139	Civil	3:40	4:00		B
53	S. Bhargavi	A-37	ECE	3:40			B
54	M. Shilpa	430	ECE	3:40	4		S

03/01/2020

1	Suathi	410	ECE	10:20			S
2	Abhishek	419	"	"			A
3	B. Tejaswan	406	"	"			T
4	N. Pavani	18RPIA0537	CSE 2 nd yr	11:25			P
5	G. Suathi	521	ECE II	11:25			G
6	V. Anusha	433	ECE	1:00			A
7	Ankeetha Jha	406	"	"			A
8	Manjula	452	"	"			M
9	B. Anusha	413	"	"			B
10	mani			2:34			M

Principal

S. No.	Name of the User	Roll No. / Designation	Year / Branch	Time In	Time Out	Initials	Remarks
		20/01/2020					
1	D. Narani	17RPIA0426	ECE 3 rd yr	9:30			
2	K. Sangeetha	18RPIA0526	CSE 2 nd yr	9:35			
3	M. Sumanaya	534	"	"			
4	S. Nandini	550	"	"			
5	Jahnavi	506	"	"			
6	S. Mamatha	SH 9	"	"			
7	P. Bala Gayathri	539	"	"			
8	R. Gayathri	18RPSA0107	Civils 1 st yr	9:40	9:45	K Gayathri	
9	Jyothirmai	16RPIA050	CSE IV	11:20			
10	Nareesh			10:40		Nareesh	
11	T. Kalyani	19RPSA0430	ECE - 1 st year	11:15		Kalyani	
12	P. Geethayali	19RPSA0207	EE - 1 st year	11:20		Geetha	
13	R. Saimriya	19RPSA0221	EE - 1 st year	"		Saimriya	
14	G. Mounika	19RPIA0543	CSE - 1 st yr	"		Mounika	
15	A. Hrudhika	19RPIA0535	"	"		Hrudhika	
16	C. Lavanya	19RPIA0526	"	"		Lavanya	
17	Suman Tiwari	19RPIA0441	ECE 1 st yr	11:18		Suman	
18	Manusha	" 427	"	"		Manusha	
19	Pravalika	" 435	"	"		Pravalika	
20	Hemalatha	" 412	"	"		Hemalatha	
21	Sasmita	19RPIA0481	"	"		Sasmita	
22	U. pooja	19RPIA0439	"	"		U. pooja	
23	Nandini	19RPIA0432	"	"		Nandini	
24	Tilak Kumar	19RPIA0416	"	"		Tilak	
25	D. Bhavana	19RPIA0529	"	"		Bhavana	
26	A. Bhavana	" 546	"	"		Bhavana	
27	G. Shireesha	19RPSA0415	ECE - 2 nd yr	11:25		Shireesha	
28	G. Akhila	19RPSA0542	CSE - 1 st yr	12:20		Akhila	
29	Shalini	19RPSA0513	"	"		Shalini	
30	Vyshanvi	19RPIA0548	"	"		Vyshanvi	
31	Bharge	19RPIA0590	"	"		Bharge	
32	Priyanka	19RPSA0127	Civil 2 nd yr	11:30	12:44	Priyanka	
33	N. K. Katti	19RPSA0136	"	4:30	"	N. K. Katti	
34	P. Mounika	138	Civil 2 nd yr	"	"	Mounika	
35	Amulya	107	"	"	"	Amulya	
36	P. Anushya	11578	CSE 1 st yr	"	"	Anushya	
37	Silvani	" 521	"	"	"	Silvani	
38	Monica	599	"	"	"	Monica	
39	G. Sindhu	544	"	"	"	Sindhu	
40	D. Akhila	532	"	"	"	Akhila	

Principal

S. No.	Name of the User	Roll No. / Designation	Year / Branch	Time In	Time Out	Initials	Remarks
56	Juli Kumari	19RPIA0416	B.Tech	3:20		Jdk	
57	T. Sony	433	B. Tech 1st	3:20			
58	P. Deepika	17RPIA0435	B.Tech III	3:30			Deepika
59	J. Shwetha	418	"	"			Shwetha
60	K. Mounika	19RPSA0211	B.Tech 2nd yr	3:30	3:45		MNF
61	U. Sai Chandan	19RPIA0620	"	3:30			
62	Priyanka Shastri	17RPIA0204	ECE, 3rd year B.Tech	3:45			Priyanka
28/01/2020							
1	B. Vandana	19RPIA0409	B.Tech 1st yr	9:35			Vandana
2	A. Ramya	19RPIA0401	B.Tech 1st yr	9:35			A. Ramya
3	K. Rajathri	18RPSA0107	3rd yr	"	9:40		K. Rajathri
4	P. Rachana	- 113	"	"	9:46		P. Rachana
5	V. Supraja	5A3	1st yr	"			Supraja
6	T. Pravalika	19RPIA0435	2nd B.Tech ECE	10:09			Pravalika
7	P. Anitha Devi	19RPIA0426	1st B.Tech ECE	"			Anitha
8	G. Chandrakanth	ASB. 1007	CSE	10:00			Chandran
9	P. Vasavi	19RPIA0442	ECE 1st yr	10:05	11:00		Vasavi
10	K. Deepa	" 11413	"	"	11:00		Deepa
11	K. Bhargavi	19RPIA0513	CSE 1st yr	10:06			Bhargavi
12	Sanjana	16RPIA0416	ECE 4th yr	11:15			Sanjana
13	Nikharika	422	"	"			Nikharika
14	Anusha	413	"	"			Anusha
15	Juli Kumari	19RPIA0416	B.Tech 1st yr	11:15			Juli Kumari
16	T. Sony	19RPIA0433	"	"			T. Sony
17	P. Sarmanusha	19RPIA0427	B.Tech 1st yr	11:55			Sarmanusha
18	S. Sai Lakshmi	19RPIA0430	1st year ECE	12:03	12:10		S. Sai Lakshmi
19	N. Vani	19RPIA0423	"	12:02	12:10		N. Vani
20	A. Sri Hampi	19RPIA0405	"	"	12:10		A. Sri Hampi
21	S. Sai Lakshmi	19RPIA0429	"	"	12:10		S. Sai Lakshmi
22	B. Bhargavi	19RPIA0512	"	12:05	12:10		B. Bhargavi
23	K. N. Divya	" 555	"	"	12:10		K. N. Divya
24	Sathvika	19RPIA0527	B.Tech 1st yr	12:05	12:10		Sathvika
25	Harika	17RPSA0112	CIVIL	"			Harika
26	Shravan	107	"	"			Shravan
27	Divya	17RPSA0111	civil	"			Divya
28	Vanika	16RPIA0101	civil	"			Vanika
29	Ravathi	19RPIA0549	CSE	12:00			Ravathi
30	J. Jayashree	19RPIA0508	CSE	12:10			J. Jayashree
31	U. Poorna	19RPIA0439	ECE	"			U. Poorna
32	S. Mandini						Mandini

Principal

S. No.	Name of the User	Roll No. / Designation	Year / Branch	Time In	Time Out	Initials	Remarks
36	E. Alitha	18RPIA0536	1 st Btech 1 st year CSE	1:10		Alitha	
37	Saba	16RPIA0552	IV th yr CSE	1:15		Saba	
38	V. Shireesha	18RPIA0534	B-Tech 2 nd yr	1:15		Shireesha	
39	S. Nandini	18RPIA0550	"	1:35		Nandini	
40	P. Lalitha	18RPIA0542	"	"		Lalitha	
41	M. Prayaga	19RPSA0127	II nd yr	1:30		Prayaga	
42	P. Bala Gayathri	18RPIA0539	2 nd yr	2:30		Bala	
43	S. Bhavana	18RPIA0545	"	"		Bhavana	
44	B. Swathi G	18RPIA0521	"	"		Swathi	
45	P. Sriyanka roat	19RPIA0554	1 st year	"		Sriyanka	
46	Kalyani	19RPIA0532	1 st year	"		Kalyani	
47	T. K. Anuradha	11A	4 th yr	3:00		Anuradha	
48	B. Vandana	18RPIA0409	1 st yr ECE	3:00		Vandana	
49	K. Santhya	19RPIA0418	"	3:00		Santhya	
50	G. Suman	19RPSA0205	2 nd yr ECE	3:00pm		Suman	
51	G. Suman	19RPSA0204	2 nd yr EEE	3:10pm		Suman	
52	Sumera	16RPIA0560	4 th yr CSE	3:10pm		Sumera	
53	P. Vinitha	18RPIA0404	II nd year	3:30pm		Vinitha	
54	K. Moanika	19RPSA0211	II nd yr	3:33 pm	3:55	Moanika	
55	P. Moanika	19RPSA0138	II nd year	3:53 pm		Moanika	
56	V. Shireesha	18RPIA0534	B-Tech 1 st yr	3:57		Shireesha	

07/02/2020

1	G. Chandra	18RPSA0107	CSE	9:45		Chandra	
2	Ch. Sai Prasanna	18RPSA0109	Civil	9:50		Sai Prasanna	
3	Ravali	102	"	"		Ravali	
4	S. Manjatha	18RPIA0549	CSE	10:30		Manjatha	
5	N. Pawan	537	CSE	10:30		Pawan	
6	S. Bhargavi	17RPIA0431	ECE	10:25		Bhargavi	ID-Book
7	V. Sudhishna	17RPIA0441	ECE	10:25		Sudhishna	
8	Yashashwini	16RPIA0203	EEE	10:05		Yashashwini	
9	K. Sanku	207	"	"		Sanku	
10	K. Jyothi	206	"	"		Jyothi	
11	K. Deepa	19RPIA0413	"	11:05		Deepa	
12	P. Vasavi	242	"	11:05		Vasavi	
13	S. Snyana	434	"	"		Snyana	
14	A. Adithya	402	"	11:10		Adithya	
15	P. Namitha Devi	426	"	"		Namitha	
16	P. Anavali	3135	"	"		Anavali	
17	Sri Lakshmi	430	ECE	11:30		Lakshmi	
18	Valli	415	"	"		Valli	

Principal
& Tech Wall

S. No.	Name of the User	Roll No. / Designation	Year / Branch	Time In	Time Out	Initials	Remarks
20	B. Vandini	19RP5A0406	7 th yr B-te	3:00	3:00		
21	V. Sudhishna	17RP1A0411	III rd yr	3:00	3:00		
22	Sa. Neelika	4051	"	"	"		
23	K. Likitha	421	"	"	"		Likitha
24	S. Sravya	438	2 nd yr	"	"		
25	Tejashwini	466	3 rd yr	"	"		
26	M. Mounika	19RP5A0132	2 nd year	"	"		
27	L. Shrivani	18RP1A0406	"	"	"		
28	Sravani	431	"	"	"		
17/02/2020							
1	K. Sathulika	19RP1A0422	B.Tech 4 th yr	9:30			
2	Ankeetha Tha	16RP1A0405	B.Tech 4 th yr	9:40			
3	B. Valhara	16RP1A0407	"	9:40			
4	K. Kamalakar	fac	Engg				
5	Tejal Pwari	19RP1A0598	B.Tech 1 st yr	10:15			
6	N. Chaitanya	19RP1A0591	B.Tech 1 st yr	10:15			
7	U. Pooja	19RP1A0423	1 st year	10:10			
8	T. Kalyani	19RP5A0430	2 nd year ECE	11:20			
9	Suwalhi	16RP1A0410	1 st yr ECE				
10	Ch. Abhilash	fac	"	11			
11	G. Sushmita	19RP1A0537	B.Tech 1 st yr	11:33			
12	K. Kavyasree	19RP1A0549	"	"			
13	L. Susila	19RP1A0573	"	"			
14	U. Sandhya	19RP1A05A2	"	"			
15	P. Sreetha	19RP1A0583	"	"			
16	D. Karthika	19RP1A0533	"	12:00	1:00		
17	K. Vaishnavi	18RP1A0529	"	"			
18	M. Susha	faculty	CS En	"			
19	Shwani	18RP1A0507	B.Tech 1 st yr	"			
20	G. Ravathi	19RP1A0545	B.Tech 1 st yr	1:00	"		
21	K. Poathysa	19RP1A0556	"	"	"		
22	K. Reelitha	19RP1A0559	"	"	"		
23	Mani	19RP5A0418	"				
24	Anusha	433	"	1:00			
25	A. Sujana	18RP1A0505	"	1:00			
26	D. Shrishta	19501-EC-212	"	1:20			
27	A. Tejavani	19501-EC-243	"	1:20			
28	E. Harsha	17RP1A0415	B.Tech 3 rd yr	1:25	1:26		
29	Hemalatha	19RP1A0412	B.Tech 1 st yr ECE	1:30			
30	P. Pranavika	19RP1A0435	"	1:30			

S. No.	Name of the User	Roll No. / Designation	Year / Branch	Time In	Time Out	Initials	Remarks
54	P. Vasavi	19RPIA0442	ECE 1st yr	2:51			V
55	P. Priyanka	18RPSA0111	Civil 3 rd yr	2:51		Priyanka	
56	Ch. Jahnvi	19RPIA0522	CSE 1 st yr	3:00		Ch	
57	Y. Shwetha	19RPIA0545	"	"			
58	K. Deepa	19RPIA0413	ECE 3 rd yr	3:45		Deepa	
59	S. Sujana	434	"	"		Sj	
60	Beena Kumari	19501-CM-236	CSE 1 st year	"		Beena	
61	A. Vinitha	18RPIA0404	ECE 2 nd yr	"			
62	P. Divya	17RPSA0111	Civil	"		Divya	
63	R. Chandrakala	19RPSA0222	ECE	"		Chandy	
64	G. Kalpana	17RPIA0104	Civil	4:00			

26/02/2020

1	K. Sathwika	17RPIA0413	ECE	11:45			
2	G. Chandra	17RPSA0111	CSE	10:40			
3	A. Sripa	19RPIA0506	CSE	10:50			
4	K. Anitha	17RPSA0105	Civil	11:05	12:00		
5	K. Prathyusha	19RPIA0540	CSE	11:10	11:15		
6	G. Reepika	19RPIA0544	"	"	"		
7	S. Mamatha	18RPIA0549	"	71			
8	B. Jahnvi	18RPIA0506	CSE	11:10		Jahnvi	
9	P. Vasavi	19RPIA0442	ECE 1st yr	11:15			
10	B. Balamma	17RPSA0105	Civil	11:18			
11	Juli Kumari	19RPIA0416	ECE	11:20		Jku	
12	Priyanka	19RPSA0127	Civil	11:20			
13	P. Kanya	"	"	"			
14	B. Sarjana	16RPIA0416	ECE	12:00		B Sarjana	
15	P. Divya	17RPSA0209	ECE	12:05			
16	G. Shwanya	203	ECE	"			
17	J. Divya	19RPIA0547	CSE 1 st yr	12:10	1:00		
18	B. Bhargavi	19RPIA0512	"	"	12:43	Bhargavi	
19	P. Bhavani	19RPSA0139	Civil, 11 th yr	1:20		Bhavi	
20	B. Balamma	17RPSA0105	Civil	1:20			
21	P. Namratha	18RPSA0405	B.Tech 3 rd yr	1:35	1:38		
22	M. Usha	19RPSA0214	" 2 nd	1:35	"	Usha	
23	J. Divya	18RPIA0317	B.Tech 1 st yr	1:35			
24	S. Nandini	18RPIA0550	B.Tech 2 nd yr	2:05			
25	Lalitha	18RPIA0542	B.Tech 2 nd yr	2:05			
26	Ch. Spandana	18RPIA0513	B.Tech 1 st yr	2:20			
27	D. Niharika	18RPIA0422	" 4 th yr	3:00			
28	B. Sarjana	416	"	3:00			

Principal
of Engg & Tech for Women

S. No.	Name of the User	Roll No. / Designation	Year / Branch	Time In	Time Out	Initials Sign	Remarks
32	E. Swetha	18RPIA0103	Civil/3 rd yr	12:51	12:59		Swetha
38	Ch. Sai prasanna	101	" 3 rd yr	"	"		Ch. Sai Prasanna
39	G. Mounika	19RPIA0543	B.Tech 1 st yr	1:20			G. Mounika
40	P. Dinya	17RPIA0111	B.Tech 1 st yr	1:30			P. Dinya
41	B. Bhargavi	19RPIA0512	B.Tech 1 st yr	1:35			B. Bhargavi
42	D. Bhavani	19RPIA0139	Civil, 11 yr	2:10			Bhavani
43	Ch. Sandeepthi	19RPIA0525	CSE 1 st yr	2:30			Ch. Sandeepthi
44	T. Sravani	19RPIA0431	ECE 1 st yr	2:40			T. Sravani
45	K. Mani	418	"	"			K. Mani
46	K. Shireesha	415	"	"	4:00		Shireesha
47	J. Pravalika	416	"	"			J. Pravalika
48	V. Rekha devi	432	"	"			V. Rekha devi
49	Akhila. V	18RPIA0142	ECE 3 rd yr	2:40			Akhila. V
50	Manjula	16RPIA0452	" 4 th yr	3:10			Manjula
51	Anceetha The	406	"	"			Anceetha The
52	Anshu	413	"	"			Anshu
53	B. Mahitha	508	"	"			B. Mahitha
54	P. Prasanna	19RPIA0228	EEE 2 nd yr	3:40			P. Prasanna
55	A. Srujanika	19RPIA0103	Civil 1 st yr	3:45	3:50		A. Srujanika
56	B. Prathiyusha	19RPIA0505	B.Tech 3 rd yr	3:50			B. Prathiyusha

07/03/2020

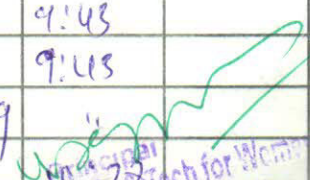
1	Akhila. V	17RPIA0142	B.Tech 3 rd yr	9:30			Akhila. V
2	ENihanika	17RPIA0113	B.Tech 3 rd yr	9:30	9:32		ENihanika
3	G. Chandra	18RPIA0111	CSE		10:00		G. Chandra
4	Shalika	18RPIA0512	CSE		10:30		Shalika
5	K. Sangeetha	18RPIA0526	CSE		"		K. Sangeetha
6	K. Sana	18RPIA0512	CSE		"		K. Sana
7	S. Mamatha	" 549	"		"		S. Mamatha
8	K. Deepa	413	ECE		10:45		K. Deepa
9	P. Vasavi	442	"		"		P. Vasavi
10	A. Ranjya	401	"		"		A. Ranjya
11	S. Srujana	434	"		"		S. Srujana
12	Kiran	411	Eng.		"		Kiran
13	T. Sravani	19RPIA0111	ECE		"		T. Sravani
14	K. Mani	418	"		"		K. Mani
15	Pratyakha				"		Pratyakha
16	G. Mounika	19RPIA0543	B.Tech 1 st yr				G. Mounika
17	S. Dhanshi Mallika	19RPIA0546	B.Tech 1 st yr				S. Dhanshi Mallika
18	Y. Swetha	19RPIA0545	"				Y. Swetha
19	M. Kalyani	18RPIA0526	B.Tech 2 nd		2:35		M. Kalyani

Megha Inst. of Engg. & Tech for Women
Edulabad, Ghatkesar (road),
Medchal Dist - 501 301

S. No.	Name of the User	Roll No. / Designation	Year / Branch	Time In	Time Out	Initials	Remarks
	G. Priyanka	18501-EC-01	II	1:15			
	J. Vishnija	18501-EC-018	II	1:15			
	N. Divya	18501-cm-p34	II	12:00			
27/10/20							
	B. Prathyusha	17RPIA0505	IV	12:20			
	B. Sanjana	16RPIA046	IV	1:5			
	K. Anusha	Faculty		11:00.			
	C. Aparna	1550-EL-029		1:18			Aparna
	V. Ashini	-	2019 EEE	1:30			Ashini
2/11/20							
4/11/20							
6/11/20							
	Priyanka reet	19RPIA0584	CSE-1 st yr	11:26.			Priyanka
	T. Pravalika	19RPIA0485	ECE-1 st yr	12:30			T. Pravalika
	P. Ramya	17RPIA0526	CSE-4 th yr	2:25			Ramya
07/11/2020							
09/11/2020.							
	U. Sandhya	19RPIA05A2	CSE-1 st yr	1:20			Sandhya
	M. Sakya Pravalika	19RPIA0572	CSE-1 st yr	1:20.			Sakya
	G. Huelhika	19RPIA0538	CSE-1 st yr	3:20			Huelhika
10/11/2020							
12/11/2020							
	J. Moheshwari	16RPIA0435	ECE 4 th yr				J. Mohi
	K. Gayathri	18RPIA0107	Civil 4 th yr				K. Gayathri
	Sai Prasanna	101	II				Sai Prasanna

Principal
 Dept of Engg. & Tech for Women
 Anandapur

S. No.	Name of the User	Roll No. / Designation	Year / Branch	Time In	Time Out	Initials	Remarks
	N. Sandhya Ranig	20RPSA0113	Civil	3:00			
	Rachana	20RPSA0121	Civil	3:00			
20/2/21							
	P. Preeti	20RPIA0550	B.Tech	9:57	11:12		
	Teja sree	20RPIA05	" CSE	9:58	11:12		
	Dit hemalatha	19RPIA0112	ECE	10:15	"		
	N. Hemalatha	19501-C-209	Civil Dip	10:15	11:15		
	E. pooja	19501-C-225	"	10:15	11:15		
	G. vineela	19501-C-224	"	10:20			
	K. sarana	19501-C-229	"	10:20			
	M. Parvitha Reddy	19501-EC-219	ECE	11:16			
	Jali Komari	19RPIA0416	B.Tech II	11			
	T. Sany	1 " 433	B.Tech	11:17			
	M. Deepthi						
	E. Sureshi						
	A. Tejaswini	19501-EC-243	Diploma	11:20			
	M. Tulasi bhavani	19501-CM-226	Diploma	11:20			
	N. Divya	18501-CM-034	Diploma	11:20			
	T. sr						
22/2/21							
✓	T. Sneha Yadav	20501-CM-042	Diploma	10:20			
	K. Saranya	20501-CM-044	Diploma	10:40			
	A. Ankithe	20501-(M)-32	Diploma	12:20	12:27		
	Anjani	20501-CM-021	DCME	12:21	12:27		
	K. Karalaxmi	20501-CM-031	DCME	12:22	12:27		
	K. Geethika	20RPIA0415	ECE	1:00	1:05		
	P. Sravani	20RPIA0420	ECE	1:00	1:05		
	S. Navya	20RPIA0104	Civil	1:00	1:05		
	P. Tharunika	20RPSA0216	ECE	2:20	2:25		
	sneha	" 207	"	"			
	Tulasi	" 211	"	"			
	Ramyasri	" 218	"	4:00	4:02		
	Achila	" 215	"	4:00	"		
23/2/21							
	Tejal Tiwari	19...598	CSE	9:41	9:43		
	Chaitanya	19...74	CSE	9:41	9:43		
	G. Keethana		ECE	9:49	"		
	R. Maheshwari		ECE	"	"		
	B. Madhu	20RPSA0204	ECE	10:00			
	P. Radhika	20RPSA0207	ECE	10:00			


 No. 23
 Institute of Engg. & Tech for Women
 10, Edulabad, Chhatkesar (Mdr)
 Madhwal Dist-501 301

S. No.	Name of the User	Roll No. / Designation	Year / Branch	Time In	Time Out	Initials	Remarks
	A. Nikshitha	19RPSA0109	Civil	3:14			
	M. Rajini	" 129	"	"			
	M. Mahika	4115	"	"			
	M. Sumanjane	18RPIA0534	CSE	"			
	D. Navya	18RPIA0517	CSE	3:30	3:31		
	B. Harshi	18RPIA0510	CSE	3:30	3:31		
	V. Pragahema	Faculty	CSE	3:30	3:31		
	N. Deepshikha Raddy	18RPIA0518	CSE	3:50			
	A. Varsha	20RPSA0201	EEE	3:50			
	G. Sroothya	20RPSA0210	EEE	3:50			
	Saiprasanna	20RPSA0206	EEE	3:50			
	Faheen	19RPSA0503	CSE	3:50			

1/2/21

	E. Pravalika	16RPIA0512	CSE	11:35			
	D. Ramya	16RPIA0508	CSE	"			
	E. Sandhya	16RPIA0511	CSE	"			
	M. Pranavi	16RPIA0538	CSE	"			
	P. Tharusha						
	D. Akamsha		CSE	"			
	Ch. Prasanna		CSE	"			
	A. Sanitha	19RPSA0403	Civil	12:30	12:56		
	R. Saxitha	19RPSA0409	Civil	12:45	12:55		
	G. Vineela	19501-C-224	Civil	12:25	12:30		
	K. TANUJA	19501-CM-206	CME	2:40			
	M. Manvika	19501-CM-246	CME	2:50			
	A. Sneha	19501-CM-245	CME	2:50			
	K. Deepa	19RPIA0413	ECE	3:15			
	P. Vasavi	442	"	"			
	T. Priya	20RPSA0224	EEE	4:00			

2/3/21

	Haritha	19501-CM-231	CSE	9:50			
	poorjitha, sneha	19501-CM-210	CME	9:50			
	Madhuri	20RPSA0204	EEE	9:51			
	Maheshwari	20RPSA0219	EEE	9:55			
	D. Lavanya	19RPIA0414	ECE	"			
	Vasudha	410	"	"			
	Nandhini	432	"	"			

Principal
Mangal Institute of Engg. & Tech for Women
Gulabad, Ghatkesar (Maha)
Mangal Dist-501 301

B. Chandana Pillai 18501-CM-200 ECE 9:00

S. No.	Name of the User	Roll No. / Designation	Year / Branch	Time In	Time Out	Initials	Remarks
53	Nagesh Nandini	20501-EM-054	CME	3:20			Nagesh Nandini
54	M. Pooran	1					
23/3/21							
1	D. Varshita	20501-EE-011	Civil	9:47			D. Varshita
2	D. Anjali	20501-C-006	Civil	9:48			D. Anjali
3	B. Manasa		ECE	10:30			B. Manasa
4	N. Vijaya Bhavathi	20RP1A0572	CSE	2:00			N. Vijaya
5	D. Kalyani	20RP1A0524	CSE	2:00			Kalyani
6	M. Sangrutha	19501-EE-232	ECE	3:55			M. Sangrutha
7	Saba Mariyam	20RP1A0588	CSE	4:00			Saba
8	M. Akhila	20RP1A0563	CSE	4:00			M. Akhila
9	V. Krishna Swamy	20RP1A0545	CSE	4:15			V. Krishna Swamy
24/3/21							
1	K. Teja Sri	00RP1A0598	CSE	10:00			K. Teja Sri
2	G. Shrishta						G. Shrishta
25/3/21							
1	P. Drameenwar	Faculty (Exp. (Polytec))		9:45			P. Drameenwar
	G. Shrishta	Faculty	ECE	9:45			G. Shrishta
	N. Mounika	Faculty	ECE	'			N. Mounika
	A. Rangarao	Faculty	ECE	10:00			A. Rangarao
	N. Lakshmi	Faculty	CSE	11:45			N. Lakshmi
	S. Bhayani	20RP5A0211	EEE	11:30			S. Bhayani
	G. Keerthana	20RP5A0208	EEE				G. Keerthana
	R. Maheshwari	20RP5A0219	ECE	12:30			R. Maheshwari
26/3/21							
1	P. Deepthi Sri	Faculty	Physics	02:30			P. Deepthi Sri
	T. Nairya		ECE	2:45			T. Nairya
	M. Sumitra	Faculty	Civil	2:45			M. Sumitra
	S. Sudha	"	ECE	2:45			S. Sudha
27/3/21							
1	B. Hareesh	Faculty	Civil	10:30			B. Hareesh
2	A. Divya Reddy	Faculty	Civil	10:35			A. Divya Reddy
1	V. Mounika	20RP1A0573	ECE	12:17			V. Mounika

Malla Reddy Institute of Engg & Tech for Women
 Ghatkesara, Ghatkesara (M.D.)
 Medical Dist. 507 301

S. No.	Name of the User	Roll No. / Designation	Year / Branch	Time In	Time Out	Initials	Remarks
1	Md. Ishagae	Asst Librarian		9:30		Ishagae	
2	Alehm	Asst Lib		10:00		Alehm	
3	K. Naveeth	Asst Lib		10:00		Naveeth	
4	C. Parvath Kanth			10:10		Parvath	
5	B. Tejaswami	Btech IV		2:37		BT	

2/7/21

1.	G. Akhila	Btech II		11:40		G. Akhila	
2.	E. Sneha	Btech II		11:40		Sneha	
3.	B. Sannidhya	Btech II		12:31		Sannidhya	

3/7/21

6/7/21

1.	K. Deepika	Dip ECE		12:15		Deepika	
2.	G. Arathi	Dip ECE		12:15		G. Arathi	
3.	V. Manasa	Dip ECE		12:15		V. Manasa	
4.	D. Sweetha	Dip CSE		12:30		D. Sweetha	
5.	B. Shalini	Dip CSE		12:30		B. Shalini	
6.	Saba Maniyan	20RPIA0589		12:45		Saba	Book Return
7.	Siri Ellanki	20RPIA0529		12:45		Siri	Book Return
8.	K. Anusha	Faculty	(A026)	12:45		Anusha	
9.	D. Sathvika	Dip ECE		01:06		Sathvika	
10.	K. Anusha	Faculty	(A051)	0:10		Anusha	

7/7/21

1.	D. Sweetha	Dip CME		11:50		D. Sweetha	
2.	D. Varshika	Dip Civil		11:50		D. Varshika	
3.	M. Sri Krishna Praya	DIP CIVIL		11:50		Krishna Praya	
4.	B. Shalini	Dip CME		11:50		B. Shalini	
5.	A. Ankitha	Dip CME		12:15		A. Ankitha	
6.	K. Varalaxmi	Dip CME		12:15		A. Ankitha	
7.	O. Sailaja	Dip CME		12:15		Sailaja	
8.	A. Anroshya	Dip CME		12:15		Anroshya	
9.	G. Shreetha	Faculty		2:48		Shreetha	

Principal
Engg. & Tech for
Ghatkesar
Dist-501

S. No.	Name of the User	Roll No. / Designation	Year / Branch	Time In	Time Out	Initials	Remarks
35	Aarthi	18R536	111	3:30			Sh
36	Shahjish	547					
37	Deekshitha	19RPIA0518	11	3:43			
38	PRATHYUSHA	19RPSA0130	"	3:52			(D)
39	Sivani	1 26	"	3:52			(S)
40	Mounika	11 15	"	3:52			(M)
41	D. Nagaraja	Faculty	CIVIL	(0226)			Nagar
42							
43							

22/7/21

1	B. Priyanka	19RPIA0516	2 nd	10:19			
2	G. Mainika	19RPIA0543	2 nd CSE	10:19			
3	S. Sri Laxmi	19RPIA0430	2 nd ECE	10:30			
4	Juli Kumar	19RPIA0416	2 nd ECE	10:35			
5	K. Bhargavi	19RPIA0553	2 nd CSE	10:56			
6	B. Harshi	18RMA11	B-9	11:00			
7	K. Prathyusha	19RPIA0500	2 nd CSE	11:00			
8	Aarthi	18R536	3 rd CSE	11:00			(D)
9	Veekhan	19RPIA0502	3 rd CSE	11:00			
10	Namya	19RPIA0512	11	11			
11	Vandana	19RPSA0501	"	"			Vandana
12	Madhuri	19RPSA0501	"	"			Madhuri
13	Tar						
14	S. Anusha	20RPSA0119	2 nd year civil	12:00			(D)
15	S. Swarupa	20RPSA0120	"	"			(S)
16	M. Deepthi Rani	20RPSA0516	2 nd year CSE	12:14			M. Deepthi -
17	E. Swathi	20RPSA0509	2 nd year CSE	12:14			E. Swathi.
18	T. Sindhu	19RPIA05A0	2 nd year CSE	12:17			T. Sindhu
19	U. Sandhya	19RPIA05A2	2 nd year CSE	11			U. Sandhya
20	B. Bhargavi	" 512	"	"			Bhargavi
21	N. Pravalika	572	"	11			
22	N. Anusha	19RPSA0134	3 rd year Civil	12:30			N. Anusha
23	Asma	19RPSA0102	"	"			Asma
24	S. Sri Laxmi	19RPIA0430	2 nd year ECE	1:45			
25	Juli Kumar	19RPIA0416	2 nd year ECE	2:00			J. Kumar
26	K. Deepa Reddy	413	2 nd year ECE	2:50			Deepa
27	K. Prathyusha	19RPIA0500	2 nd year CSE	2:55			
28	K. Bhargavi	" 553	"	"			
29	K. Mallika	19RPIA05A6	"	3:40			Mallika
30	K. Swetha	11 SA1	"	3:40			Swetha
31	Ch. Vignetha	11 523	"	3:40			Ch. Vignetha

Principal
Maha Ins. of Engg. & Tech for Women
Eulabad, Ghantasalar (M.D.)
Medchal Dist-601 301

REGISTER

S. No.	Name of the User	Roll No. / Designation	Year / Branch	Time In	Time Out	Initials	Remarks
15	G. Neelima	19RPSA0504	CSE	10:52		<i>[Signature]</i>	
16	K. Anusha	Faculty	ECE	11:4		<i>[Signature]</i>	
17	I. Yashodha	19RPSA0513	CSE	11:57		<i>[Signature]</i>	
18	Bhavana	20RPSA047	ECE	11:59		<i>[Signature]</i>	
19	Keerthana	1111420	ECE	11:59		<i>[Signature]</i>	
20	S. Anusha	20RPSA0119	Civil	2:10		<i>[Signature]</i>	
21	N. Sravani	20RPSA0124	"	2:16		<i>[Signature]</i>	
22	S. Swarnpa	120	"	"		<i>[Signature]</i>	
23	P. Bhavani	19RPSA0139	CIVIL	2:30		Bhavi	

29/7/21

1	Aishwarya G	20RPSA0209	EEE	9:45		G. Aishw.	
2	G. Keerthana	208	ECE	12:30		<i>[Signature]</i>	
3	Bhargavi	221	"	1:1		<i>[Signature]</i>	
4	Srinija	203	"	1:38	2:02	<i>[Signature]</i>	
5	Poojitha	213	"	"	2:02	<i>[Signature]</i>	
6	Aishwarya Sulva	209 507	" -CIV	"	"	<i>[Signature]</i>	
7	P. Hema	20RPSA0116	CIVIL	3:15			

30/7/21

1	M. Sudheer Babu	Faculty	ECE	"		<i>[Signature]</i>	
2	Keerthana	208	ECE			<i>[Signature]</i>	
3	Bhargavi	221	ECE			<i>[Signature]</i>	
4	T. Kalyani	430	ECE			<i>[Signature]</i>	
5	G. Sai Bhargavi	413	ECE			<i>[Signature]</i>	
6	Sr. Aishwarya	209	EEE	12:00		<i>[Signature]</i>	
7	B. Srinija	203	"	12:12		<i>[Signature]</i>	
8	K. Poojitha	213	"	12:10		<i>[Signature]</i>	
9	D. Smetha		CME	1:00		<i>[Signature]</i>	
10	B. Shalini		CME	1:00		<i>[Signature]</i>	
11	D. Breeja		Civil	1:40		<i>[Signature]</i>	
12	E. Himamadhuri	109	Civil	1:50		<i>[Signature]</i>	
13	G. Soundarya	105	Civil	1:50		<i>[Signature]</i>	
14	Niharika J	20	ECE	3:30		<i>[Signature]</i>	
15	E. Rishika	09	ECE	3:30		<i>[Signature]</i>	

31/7/21

1	K. Anusha	Faculty	ECE	10:10		<i>[Signature]</i>	
---	-----------	---------	-----	-------	--	--------------------	--