



# Megha Institute of Engineering and Technology for Women

Medchal, Telangana

## GREEN AUDIT (2020-2021)



*Prepared by*  
**Ecopie Services LLP**  
Hyderabad, Telangana



# Preface

*Environment is the only source that balance every organism and various other components. Any imbalance created by us would result in environmental crisis. One such bioresource are plants. They are the only resource which does carbon sequestration. India is one of the mega biodiverse country in the world. In order to protect the biodiversity, we have National and State level policies and Acts. The implementation of the same is done the respective Governments.*

*As citizens of the country, it is everyone's responsibility. Institutions has huge land area in their premises. And so, there is a scope for doing plantation local and indigenouse species and conserve biodiversity. This also creates a scope learning within the campus. It inculcates responsibility amongst student community and leads to behaviour change for better environment.*

*These green areas are to be planted, maintained, and improved every year. For this to happen there is a need for assessment every year. The scope for improvement suggested during the assessment becomes action plan for the following year. This also enables students to understand the gradual and sustainable conservation required for the greenery.*

*In view of the above, college management has intended to conduct Green Audit and understand the outcomes of the existing greenery and sustainable practices that are to be taken up for the improvement of biodiversity in the campus. Ecopie Services LLP was involved in this entire process of auditing.*

*We thank College Management for giving the opportunity to conduct the Green Audit and also specially thank the college team for providing the required information.*

## **Table of Contents**

<b>S.No.</b>	<b>Content</b>	<b>Page.No.</b>
<b>1</b>	Introduction	01-03
<b>2</b>	Institution Profile	04-08
<b>3</b>	Floral Biodiversity	09-11
<b>4</b>	Faunal Biodiversity	12-14
<b>5</b>	Recommendations	15
<b>6</b>	Photo plates	16-23



# Introduction

Plantation is concerned chiefly with environmental improvement, removal of atmospheric pollutants, controlling noise pollution, and microclimatic modification. The trees in the plantation areas provide various services, including biodiversity conservation, carbon sequestration, oxygen generation, mitigation of the effect of heat, microclimate regulation, soil stabilization, prevention of soil erosion, and groundwater recharge.

The right symbiosis of flora and fauna would support in conservation of environment in the area. Here another important aspect is planting local variety species would improve the soil fertility. Distribution of species principally depends on the climate conditions and presence of ecological parameters along with typical landform and land type.

Reaching the public requires both long-term education and a focus on near-term policies. An integrated strategy includes building a base of literacy, strengthening people's participation in decision-making processes, and engaging them in decisions that shape biodiversity, both at the personal level and in the societal policy.

Institutions plays very important role in carbon sequestration and keeping temperature low compared to the other spaces of the same area with greater environmental impact. Here audit of such greenery with help the management to improve biodiversity.

The scope includes (from genetics to species to ecosystems), the threats (from habitat loss to pollution to urbanization), and the responses of institution (in conservation of biodiversity). The assessment includes understanding present vegetation composition which includes trees, shrubs, climbers and herbaceous elements in and around campus. The inventory of faunal components including insects and birds has been done by random sampling method and visual observations in the campus. The standard for the work is followed through the identification of plants (by regional floras) and faunal components during the visit period in the campus. The focus is also given on pollution control methodology, best practice for environment conservation, etc.



Primary survey of college campus was undertaken for assessment of floral and faunal diversity. The list of plants which includes trees, shrubs, climbers, herbs have been prepared and documented for its further ecological importance. The assessment period for documentary evidences of environmental issues, various activities by the institution is 2018-19. The reconnaissance survey have been undertaken to understand the boundaries of the campus, vegetation pattern, existing floral and faunal components, various activities carried within the campus, etc. By visual primary observations on insects and birds diversity, a checklist has been prepared.

During the assessment of biodiversity we tried to understand the previous contribution of the institution in Biodiversity conservation through the involvement of students and staff members. Efforts were made to understand changes in vegetation pattern, avifaunal (birds) migration (if any) and other faunal components. The flowering pattern of trees, shrubs and climbers were observed to understand the pollinators and dispersal agents. The observation on faunal components including insects and birds has also been done by random sampling method and visual observations in the campus.

### **Audit objectives**

- To analyze current status of flora and fauna of the campus
- To identify the area within the campus which is suitable for conservation of biodiversity.
- To mitigate other environmental issues existing in the surroundings of the campus
- To recommend possible protection, rejuvenation and conservation of local variety vegetation and other life
- To suggest the activities for the involvement of the students

Greenery of the campus seems to be visibly high and biodiversity needs to be quantified for better conservation of local species. This also serves the Goal 5 of Sustainable Development Goals (SDGs).







# Institution Profile

Megha Institute of Engineering and Technology for women was established in the year 2008, under the umbrella of Crescent Educational Society. Eminent educationalists involved in the field of education, for over a decade, formed the governing body of the College. This institute have created new trend of innovation in the Ranga Reddy District area. The College is approved by AICTE, New Delhi, and affiliated to JNT University, Hyderabad. In the current global scenario erudite, concept rich, well-trained professionals, form the paramount stipulation of the industry. It is this forethought, that initiated the establishment of this professional institution. Exposure to constantly updated technologies, industry orientation, and proficiency in subject content has been the mantra behind the recent accomplishments. Institute has women engineering college with IIT certification. This institute has recently associated with aakaar IIT Bombay and Technex IIT Varanasi.

## **Vision**

- To become a premier Institute ensuring women's empowerment through holistic education.

## **Mission**

- To provide state-of-the-art infrastructure for students and faculty supporting effective teaching - learning process towards mutual development.
- To nurture and inculcate employability skillset through industry institute interaction policy.
- To equip, enrich and transform the students to be responsible with a strong commitment to the society.

The MIETW Centre for Engineering Innovation and Development (MCEID) - empowers students to improve human lives through the advancement of technology. MCEID encourages and accelerates development of indigenous products. The centre bridges the gap between



Industry and Institute. MCEID aspires to launch high-impact projects and develop visionary leaders by bringing together people from diverse backgrounds and giving them resources to learn, create and share. The Centre seeks to infuse design experiences into student learning through an array of classes and activities. MCEID holds workshops, lectures, networking events and exhibitions and hosts a competitive **MCEID Summer Internship Programme.**



The institute has library, which houses a large collections of reading materials such as textbooks, Reference books, Handbooks, Dictionaries and Motivational books. As the course books are concise and specific in nature, elaborate information from reference is

the need of our inquisitive minds. MIETW has a well-stocked library with exhaustive collection of nearly 2061 of reference books, Periodicals and journals and other Motivational books. The students and users make good use of the library facilities. The reading room provides an ideal atmosphere for serious reading.

The central library has a floor area of 700 Sq.Mtr. It has 2061 titles and 15163 volumes. The college is subscribed to 50 National and 35 International journals, 2000+ e-journals from DELNET INFOTRAC are also available. The college is a member of SONET, DELNET and National Digital Library of India (an attempt to overcome the serious shortage of Updated information in certain engineering disciplines).



The Sports Department of MIETW is headed by a Physical Education Team supported by two Assistant Physical Directors and two Ground men. The students are participating in various events and games inside and outside the college.



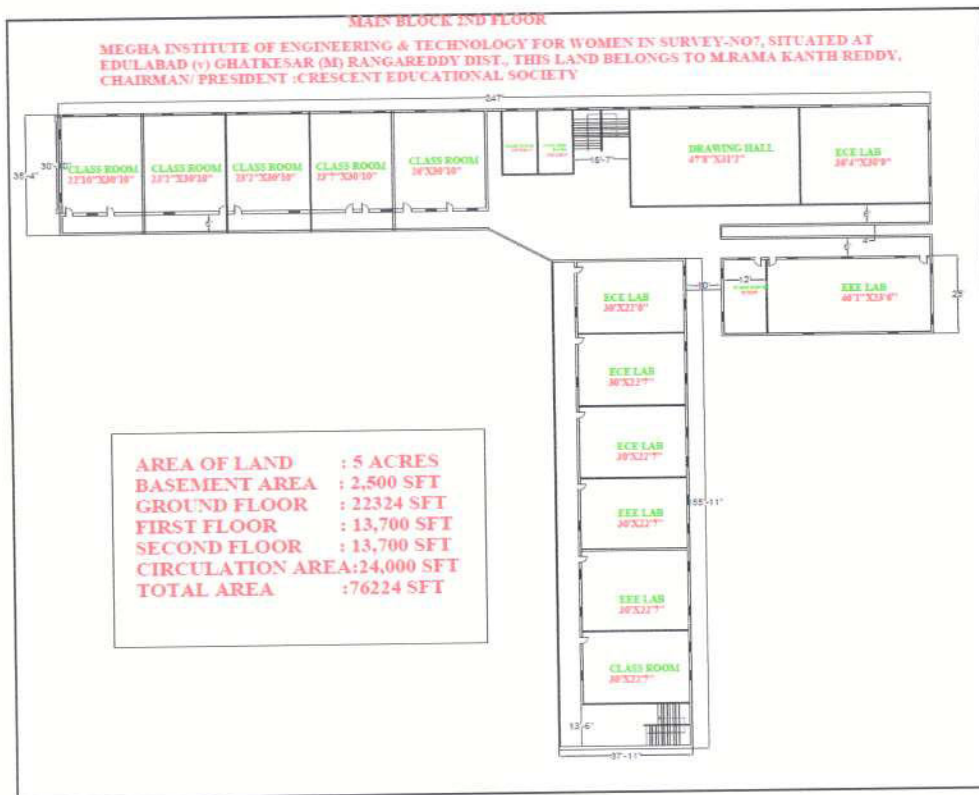
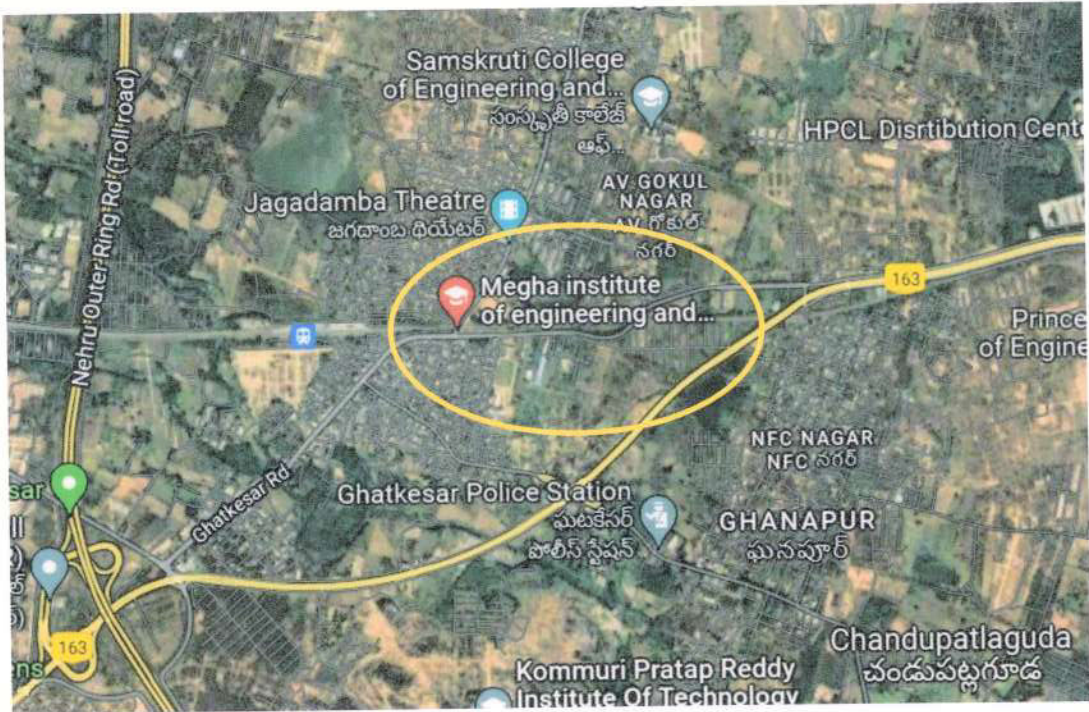
The following play facilities are available in the campus for girls like Cricket, Basketball, Volleyball, Throw Ball, Table Tennis, Badminton, Kho-Kho, Foot Ball, Caroms, Chess, Gym etc.

**A Safe and Secure Residential Facility with homely environment is available for students.**

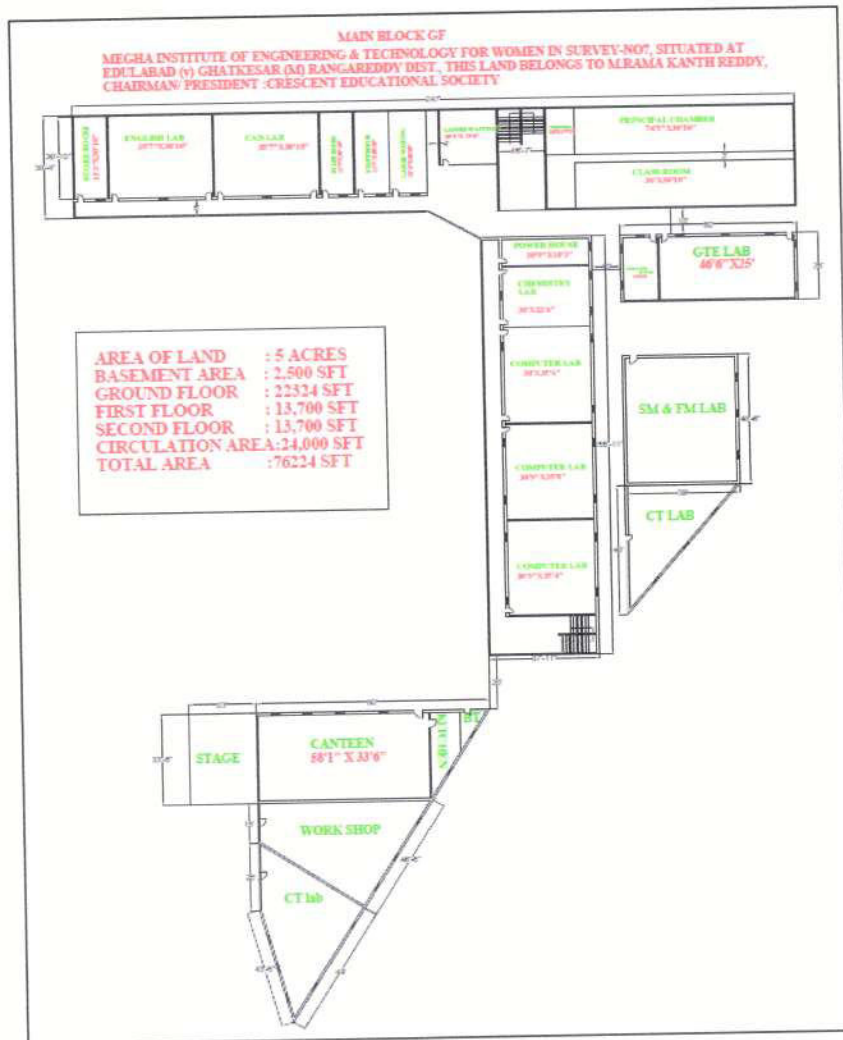
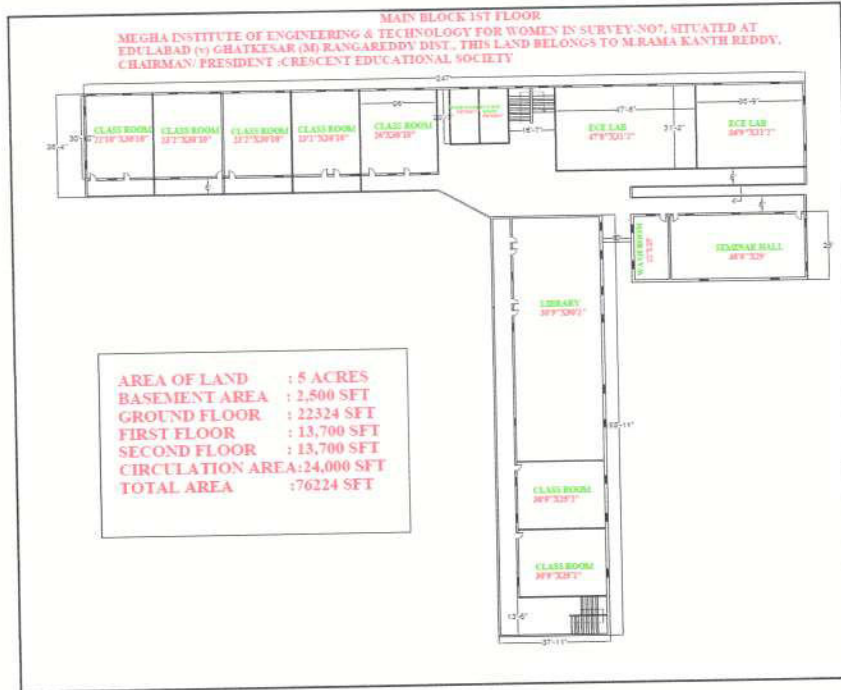
- Spacious and Airy rooms are available.
- Basic necessities like Bed with mattress and pillows, Table, Almirah, Hot water, attached washrooms are available.
- Medical Facilities available.
- Clean and spacious Mess available with dining area where fresh meals provided for Breakfast, Lunch and Dinner.
- Power Back-up facility.



**A fleet of 18 buses in a very good condition transfer the students from various parts of the city to the college and back to their localities.**







# Floral Biodiversity

The number of plant species becoming extinct is increasing at an alarming rate. Because ecosystems are in a delicate balance and because seed plants maintain close symbiotic relationships with animals, whether predators or pollinators, the disappearance of a single plant can lead to the extinction of connected animal species. A real and pressing issue is that many plant species have not yet been catalogued; their place in the ecosystem is unknown. These unknown species are threatened by logging, habitat destruction, and loss of pollinators. They may become extinct before we have the chance to begin to understand the possible impacts resulting from their disappearance. Efforts to preserve biodiversity take several lines of action, from preserving to sustaining the efforts.

Institution become good place for doing plantation with lot of biodiversity and green campus is the best place to learn for the students. The following are the list of species available in the campus:

S.NO	Tree names	Scientific Name	Type	Uses
1	Almonds	<i>Prunus dulcis</i>	Tree	Fruit
2	Mango	<i>Mangifera indica</i>	Tree	Fruit
3	Narinja	<i>Citrus x sinensis</i>	Tree	Fruit
4	Sapota	<i>Manilkara zapota</i>	Tree	Fruit
5	Lemons	<i>Citrus limon</i>	Tree	Fruit
6	Coconuts	<i>Cocos nucifera</i>	Tree	Fruit
7	Thujalu	<i>Thuja occidentalis</i>	Tree	Fruit
8	Jack fruit tree	<i>Artocarpus heterophyllus</i>	Tree	Fruit
9	Guava	<i>Psidium guajava</i>	Tree	Fruit
10	Red Clover	<i>Trifolium pratense</i>	Tree	Ornamental
11	Trailing Lantana	<i>Lantana montevidensis</i>	Shrub	Ornamental
12	Black plum	<i>Syzygium cumini</i>	Tree	Fruit



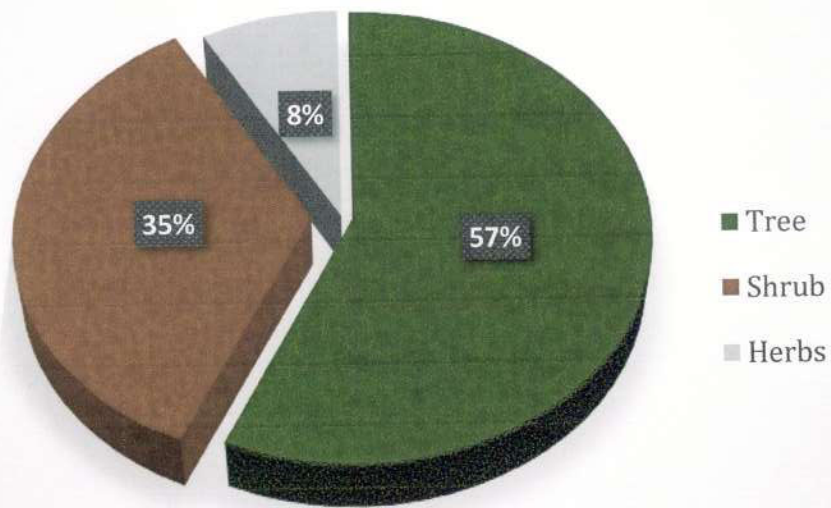
13	Goose berry	<i>Ribes uva-crispa</i>	Shrub	Fruit
14	Neem	<i>Azadirachta indica</i>	Tree	Medicinal
15	Papaya	<i>Carica papaya</i>	Tree	Fruit
16	Ganneru	<i>Nerium oleander</i>	Shrub	Ornamental
17	Custard Apple	<i>Annona squamosa</i>	Tree	Fruit
19	Pomegranate	<i>Punica granatum</i>	Shrub	Fruit
20	Jasmine	<i>Jasminum</i>	Shrub	Ornamental
21	Avacado	<i>Persea americana</i>	Tree	Fruit
22	Black siris	<i>Albizia odorantissima</i>	Tree	Medicinal
23	Screw pine	<i>Pandanus veitchii</i>	Shrub	Croton
24	Sulfur cosmos	<i>Cosmos sulphureus</i>	Herb	Ornamental
25	Banyan	<i>Ficus microcarpa</i>	Tree	Medicinal
26	Lantanas tree	<i>Lantana Camara</i>	Shrub	Ornamental
27	Royal poinciana	<i>Delonix regia</i>	Tree	Ornamental
28	Honeysuckle	<i>Tecoma capensis</i>	Tree	Ornamental
29	Chinese ixora	<i>Ixora chinensis</i>	Shrub	Ornamental
30	Sago palm	<i>Cycas revoluta</i>	Shrub	Medicinal
31	Golden trumpet	<i>Allamanda cathartica</i>	Shrub	Ornamental
32	White frangipani	<i>Plumeria pudica</i>	Shrub	Ornamental
33	Copper Plant	<i>Acalypha wilkesiana</i>	Shrub	Croton
34	Oriental Arborvitae	<i>Platyclusus orientalis</i>		Medicinal
35	Rubber Fig Tree	<i>Ficus elastica</i>	Tree	Ornamental
36	Paper flower	<i>Bougainvillea glabra</i>	Shrub	Ornamental
37	Cook pine	<i>Araucalia columnaris</i>	Tree	Medicinal
38	Moses in the cradle	<i>Tradescantia spathacea</i>	Herb	Croton
39	Beach spider lilly	<i>Hymenocallis littoralis</i>	Herb	Ornamental

### Water Tanks for Landscape

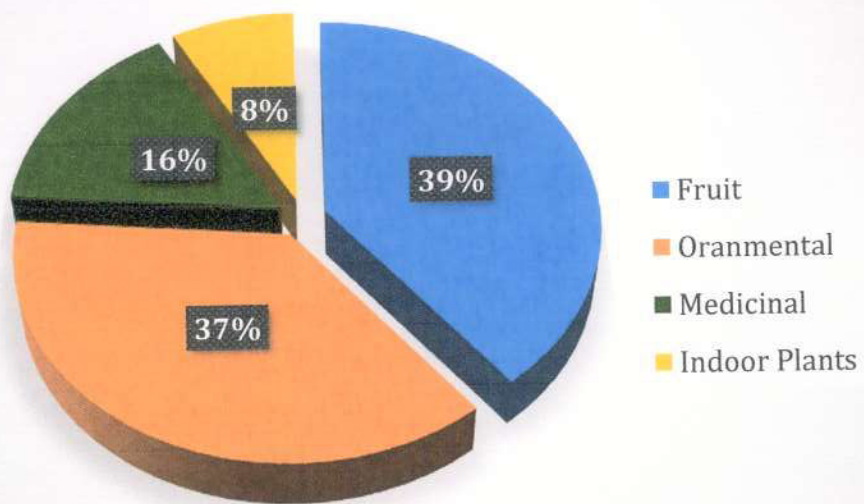
S.No	Water tanks list	Capacity	Location	Purpose
1	Tanker	5500ltr	In front of college	Sprinkling for grass
2	tanker	5500ltr	labs	Running turbines

The water used for landscape is being done through sprinklers. The quantity of water being used currently is high and can be reduced with proper management.

### Percentage of Plant types in the Campus



### Percentage of Plant species with usages



- 56% of the total species are trees and 39% of the plants are fruit bearing in the campus.
- The usage of pesticides and fertilizers is high. This can be replaced with manure prepared in the campus through composting process.



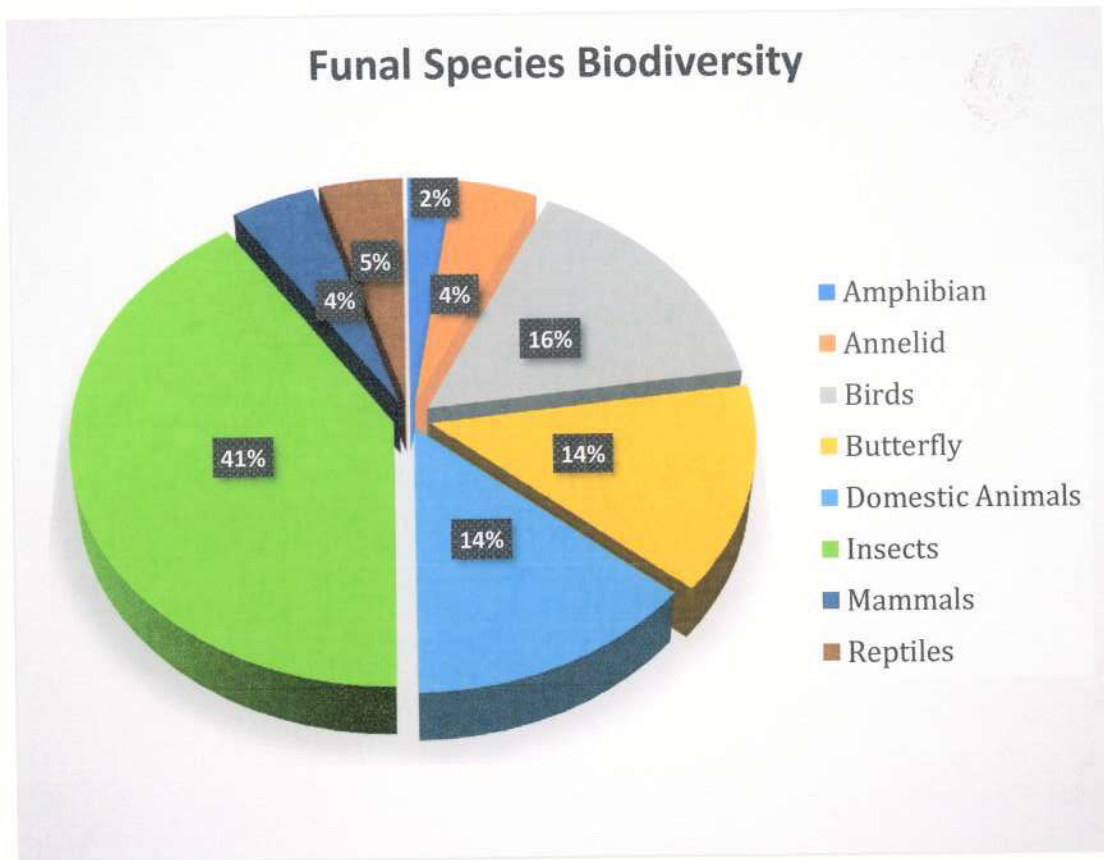
# Faunal Biodiversity

The world's biodiversity includes all living organisms (animals, plants, fungi, and microbial groups inclusive of genetic diversity and ecosystem/landscape diversity) in their interactive state contributing to a multitude of services of relevance to sustain the ecological integrity for the benefit of the humankind. It defines biodiversity as the variability among living organisms from all sources including, inter alia (among other things), terrestrial, marine and other aquatic ecosystems and the ecological complexes of which they are a part; this includes diversity within species, between species and of ecosystems". Hence the faunal biodiversity has to be conserved from everyone. Again, institution premises become good place to start small conservation activities. Several species would be visiting the institution premises seasonally or annually or anytime. Institutions can list and see how they can conserve them in their premise. Here in the Megha Institute of Engineering and Technology for Women also has the scope for doing conservation. The following are the list of fauna in the campus or visiting the campus:

SNo	Type	Local Name	Scientific Name
1	Butterfly	Common Emigrant	<i>Catopsilia pomona Fabricius</i>
2	Butterfly	Grass Yellow Butterfly	<i>Eurema hecabe Linnaeus</i>
3	Butterfly	Common Wanderer	<i>Pareronia valeria</i>
4	Butterfly	Common Fevering	<i>Ypthima baldus</i>
5	Butterfly	Crimson Rose	<i>Pachliopta hector Linnaeus</i>
6	Butterfly	Common Mormon	<i>Papilio polytes Linnaeus</i>
7	Insects	Honeybee	<i>Apis mellifera</i>
8	Insects	Fire Ant	<i>Solenopsis invicta</i>
9	Insects	Ant	Formicidae
10	Insects	Butterfly	Rhopalocera
11	Insects	Mosquito	Culicidae
12	Insects	Housefly	<i>Musca domestica</i>
13	Insects	Centipede	<i>Theatops californiensis</i>
14	Insects	Teelu	<i>Hottentotta tamulus</i>
15	Insects	Dragonfly	<i>Sympetrum flaveolum</i>
16	Insects	Miduthalu	<i>Caelifera</i> (Grass hopper)
17	Insects	Thene teega	<i>Apis mellifera</i> (honey bee)

18	Insects	Paper Wasp	<i>Polistes exclamens</i>
19	Insects	Bug	Hemiptera
20	Insects	Cricket	<i>Gryllus pennsylvanicus</i>
21	Insects	Praying Mantis	<i>Mantis religiosa</i>
22	Insects	Dry wood Termite	<i>Cryptotermes cavifrons</i>
23	Insects	Dung Beetle	<i>Phanaeus vindex maclachlan</i>
24	Insects	Cockroach	Blattodea
25	Birds	Crow	Corvus
26	Birds	Pigeon	Columba Livia Domestica
27	Birds	Sparrow	Passerdia
28	Birds	Parrot	Psittaciformes
29	Birds	Palapitta (Roller bird)	Corvus
30	Birds	Crane	Grudae
31	Birds	Kokila ( Cuckoo)	Cuculidae
32	Reptiles	Common house gecko	<i>Hemidactylus frenatus</i>
33	Reptiles	Garden Lizard	<i>Calotes versicolor</i>
34	Mammal	Indian Bush Rat	<i>Golunda ellioti</i>
35	Mammal	Monkey	<i>Cercopithecidae</i>
36	Domestic Animal	Dog	<i>Canis lupus</i>
37	Domestic Animal	Pilli (cat)	<i>Felis catus</i>
38	Domestic Animal	Goat	<i>Capra aegagrus hircus</i>
39	Domestic Animal	Buffalo	<i>Bubalus bubalis</i>
40	Domestic Animal	Cow	<i>Bos taurus.</i>
41	Domestic Animal	Pig	<i>Sus Scrofa Domesticus</i>
42	Amphibian	Indian Toad	<i>Duttaphrynus melanostictus</i>
43	Annelid	Earthworm	<i>Lumbricus terrestris</i>
44	Annelid	Snail	Gastropoda



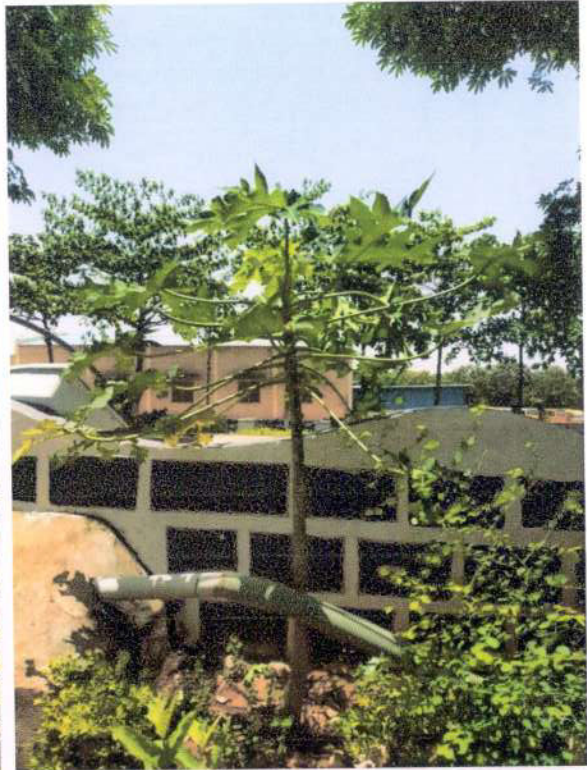


High percentage i.e., 41% of insects are found in the campus. As the campus has lot of fruit plants butterflies also visit. Amongst the total species these contribute 14% and similarly domestic animals contribute 14%. Further 16% are birds visiting the campus.

# Recommendations

1. Biodiversity of the campus has to be planned as per the soil and climate conditions with local species.
2. The wild vegetation needs to be identified and conserved. Signboards could be put displaying "Conservation area".
3. Plantation of exotic species has to be avoided
4. Patches of wild-flower habitats have to be fenced and protected from reclamation.
5. There is a need to development of college nursery.
6. Plan for the Butterfly Park, Medicinal plant Park, etc.
7. Garden needs to plant indigenous flowering plants which flower for whole year and readily available for insects and birds.
8. Avoid the burning of leaf litter in the campus.
9. Prevent the use of chemical fertilizers and pesticides.
10. Compost unit has to be established and manure is to be used for plants.
11. If possible, there should be the arrangement of artificial ponds as a source of potable water specially in summer season
12. Invasive weeds need to be eliminated /controlled.
13. Signboards could be displayed on plants in the campus area.
14. Workshop on 'Biodiversity' could be conducted in coming period of time.









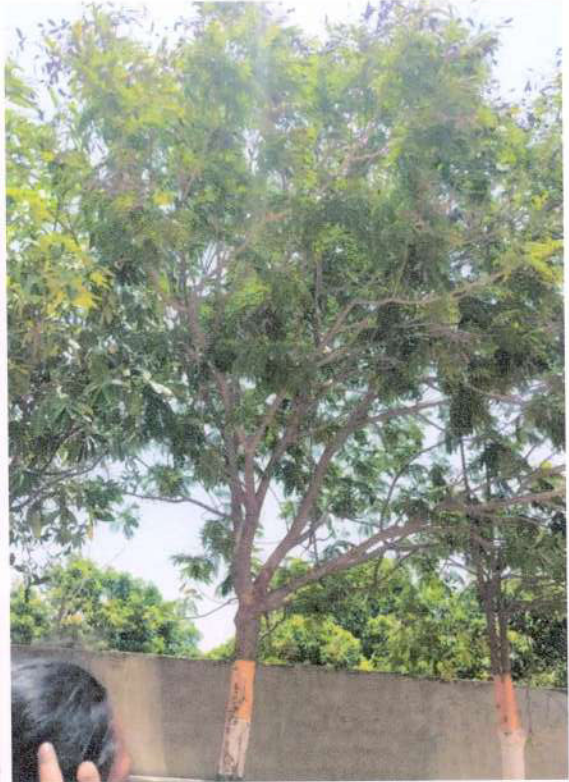




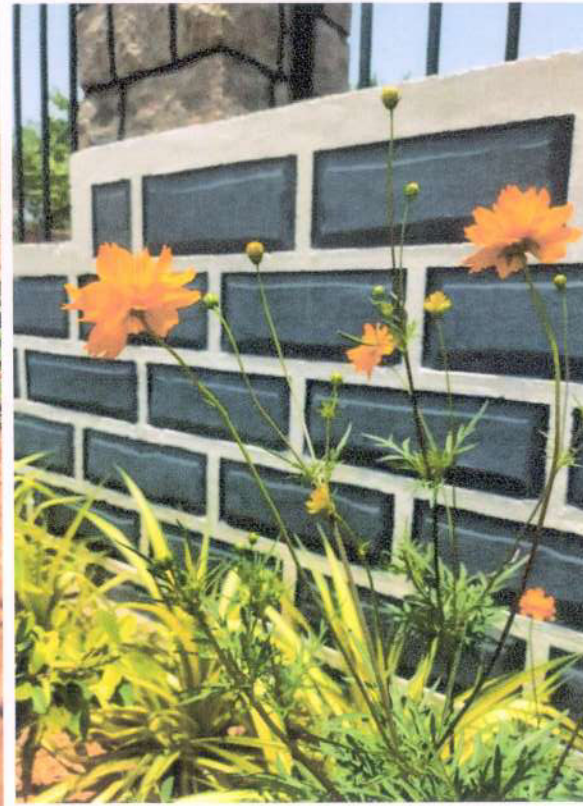




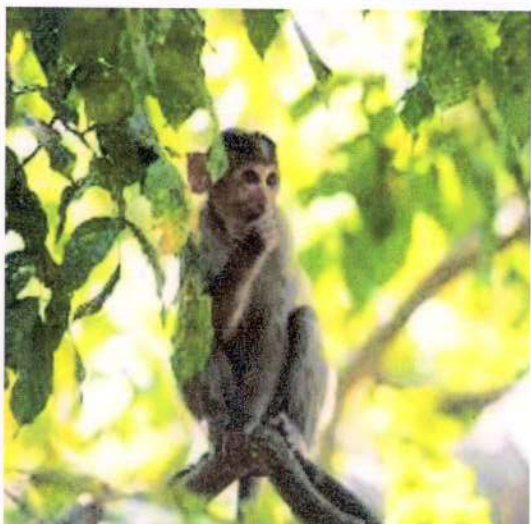
















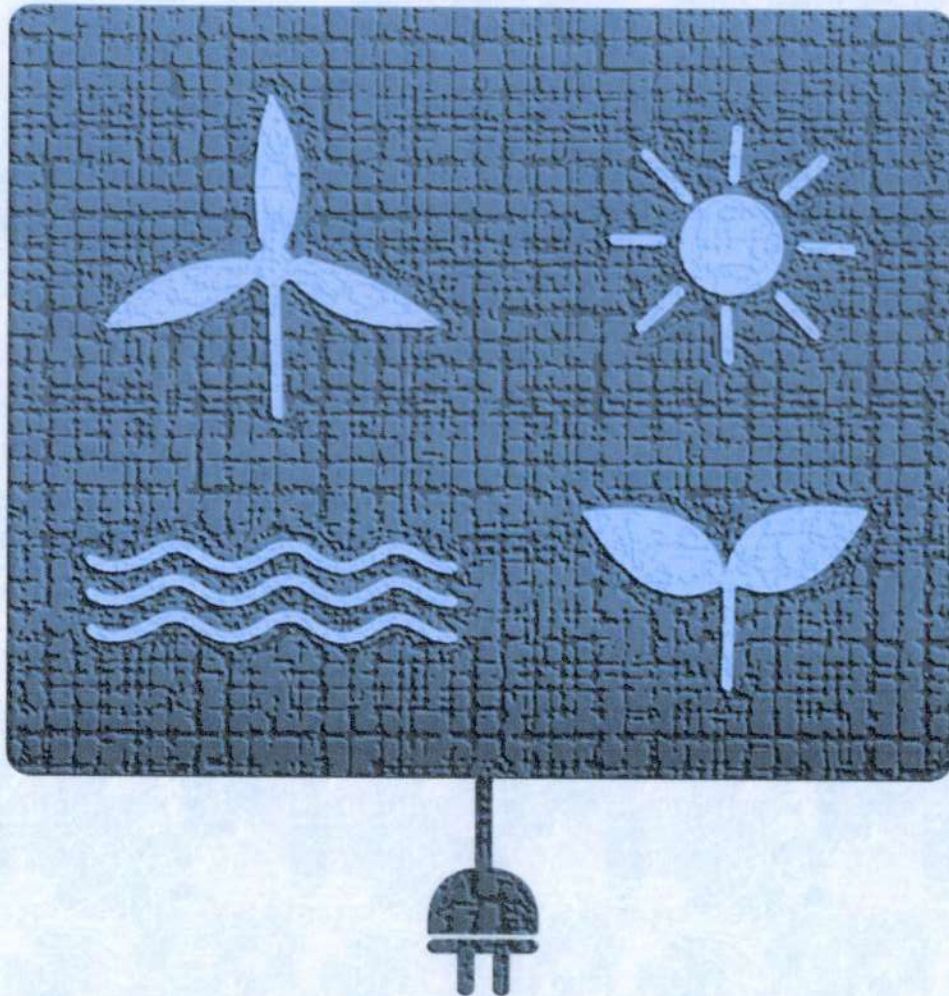




**Megha Institute of Engineering and Technology  
for Women**  
Medchal, Telangana

# **Environmental Audit**

**(2020-2021)**



*Prepared by*  
**Ecopie Services LLP**  
Hyderabad, Telangana



# Preface

Environment is the protector of the life on the earth. Therefore, in order to protect ourselves and the earth it is the prime responsibility of every citizen of the particular locality. The developmental activities performed to as part of development are degrading the environment. On the other hand, the overuse of the natural resources and polluting the available resources is causing the degradation of environment. As a result, we are witnessing several direct and indirect implications. These is in turn effecting the life. Wherein we human beings are also affected. This is the reason; we have to think and start protecting our resources and environment. To protect, manage and minimize the damage to environment, environmental education is compulsory. It develops the required skills and expertise to handle the associated challenges. Such environment education to students is to impart knowledge, create awareness, inculcate attitude of concern and provide skill to handle the environmental challenges.

India has been putting efforts on clean energy and sustainable development through various activities and schemes. This need to be properly utilised. We also have several rules, regulations and laws being implemented across the country. The laws allow us to unsure the sustainable development with proper resource management.

Institutions are the first teachers for future generations to think, invent and implement sustainable and eco-friendly activities. Any institution can make their premises environment friendly and make their students to take part in such activities. Green campus is the new concept that helps the management to grow sustainably and encourage students to take part in such activities. There are several certifications and recognitions being provided by Governments and companies encourage the institutions.

Environmental Audit helps the institutions to evaluate their activities, calculate the resource use and take up sustainable activities for making their campus into green campus. Megha Institute of Engineering and Technology is also committed to understand their resources and opt for eco-friendly and cleaner technologies.

In view of the above, Ecopie Services LLP were given responsibility to evaluate existing resources of the institution and usage of the resources, so that the proper sustainable plan can be prepared. For this entire process, the Ecopie team has conducted the resource wise audit and came up with the recommendations required to be implemented in the campus.



# TABLE OF CONENTS

SNo	CONTENT	PAGE.NO
1	Overview	01-02
1.1	Objectives	01
1.2	Methodology	02
2	Institution Profile	03-09
2.1	Campus Maps	05-06
2.2	Campus General Information	07
2.3	Buildings	07-08
2.4	Transportation	08
3	Energy Audit	09-16
3.1	Building Lighting Facility	11
3.2	Equipment Details	12
3.3	Electricity Consumption	13-16
4	Water Audit	17-20
4.1	Source of water	17-18
4.2	Floating Population	19
4.3	Drinking Water	19
4.4	Rainwater Harvesting	20
5	Waste Audit	21-23
5.1	Objectives	21
5.2	Waste Sources	22
5.3	Average monthly Wet Waste	22
5.4	Dustbins	22-23
5.5	E-Waste Management	23
6	Students Environmental Campaigns	24
7	Recommendations	25-26
8	Glimpse of student participation	27

# Overview



Environmental audit is a management tool comprising systematic, documented, periodic and objective evaluation of how well environmental organization, management and equipment are performing with the aim of helping to safeguard the environment by facilitating management control of practices and assessing compliance with company policies, which would include regulatory requirements and standards applicable.

This aims to help protect the environment and minimize the risks of development activities to the environment and human safety and health. It provides the management with information about the management performance of the institutes environment as resources for making decisions. It also develops organizational culture and increase environmental awareness amongst within the institution.

Depending on the types of standards and the focus of the audit, there are different types of environmental audit. Organization of all kinds now recognize the importance of environmental matters and accepts that their environmental performance will be scrutinized by a wide range of interested parties. Environmental auditing is used to investigate, understand and identify.

These are used to help improve existing human activities, with the aim of reducing the adverse effects of these activities on the environment. An environmental auditor will study an organizations environmental effect in a systematic and documented manner and will produce an environmental report.

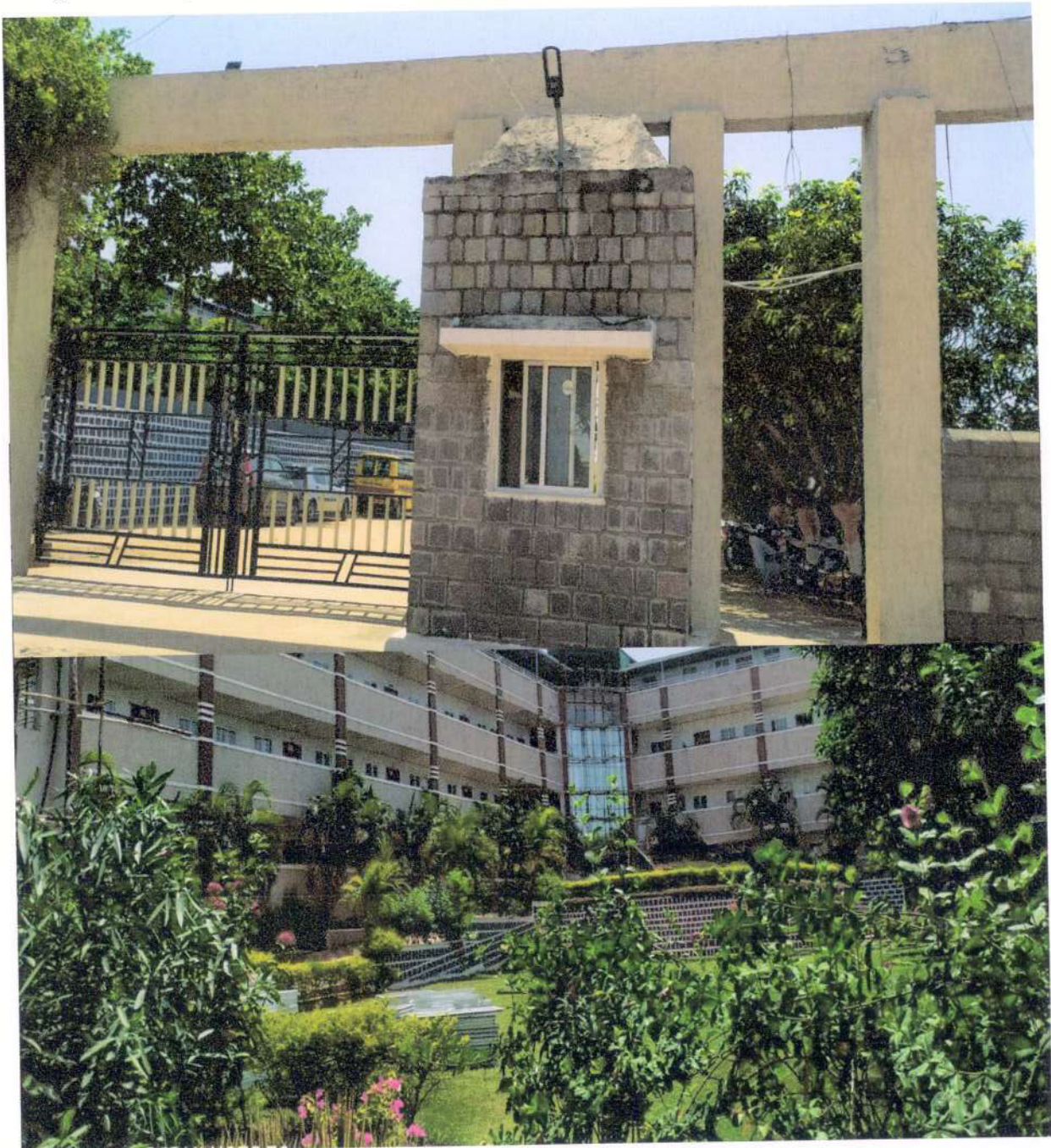
## 1.1. Objectives

- To establish a baseline data to assess future sustainability by avoiding the interruptions in environment that are more difficult to handle and their corrections requires high cost.
- To secure the environment and cut down the threats posed to human health by analyzing the pattern and extent of resource use on the campus.
- To introduce and make aware students to real concerns of environment and its sustainability.
- To bring out a present status report on environmental compliance



## 1.2. Methodology

This includes different techniques such as physical inspection of the campus, observation and review of the documentation, interviewing key persons and data analysis, measurements and recommendations. This study covers various aspects of environment as mentioned in the report. Auditing methods are chosen based on the type of information needed to prove the real-life problems assumed in the preliminary study and demonstrate the scale of these problems. The data is collected verbally, visually, and textually. After data collection, the result analysis is done on cost benefit, life cycle, comparative and regression analysis.





# Institution Profile



Megha Institute of Engineering and Technology for women was established in the year 2008, under the umbrella of Crescent Educational Society. Eminent educationalists involved in the field of education, for over a decade, formed the governing body of the College. This institute have created new trend of innovation in the Ranga Reddy District area. The College is approved by AICTE, New Delhi, and affiliated to JNT University, Hyderabad. In the current global scenario erudite, concept rich, well-trained professionals, form the paramount stipulation of the industry. It is this forethought, that initiated the establishment of this professional institution. Exposure to constantly updated technologies, industry orientation, and proficiency in subject content has been the mantra behind the recent accomplishments. Institute has women engineering college with IIT certification. This institute has recently associated with aakaar IIT Bombay and Technex IIT Varanasi.

## Vision

- To become a premier Institute ensuring women's empowerment through holistic education.

## Mission

- To provide state-of-the-art infrastructure for students and faculty supporting effective teaching – learning process towards mutual development.
- To nurture and inculcate employability skillset through industry institute interaction policy.
- To equip, enrich and transform the students to be responsible with a strong commitment of the society.

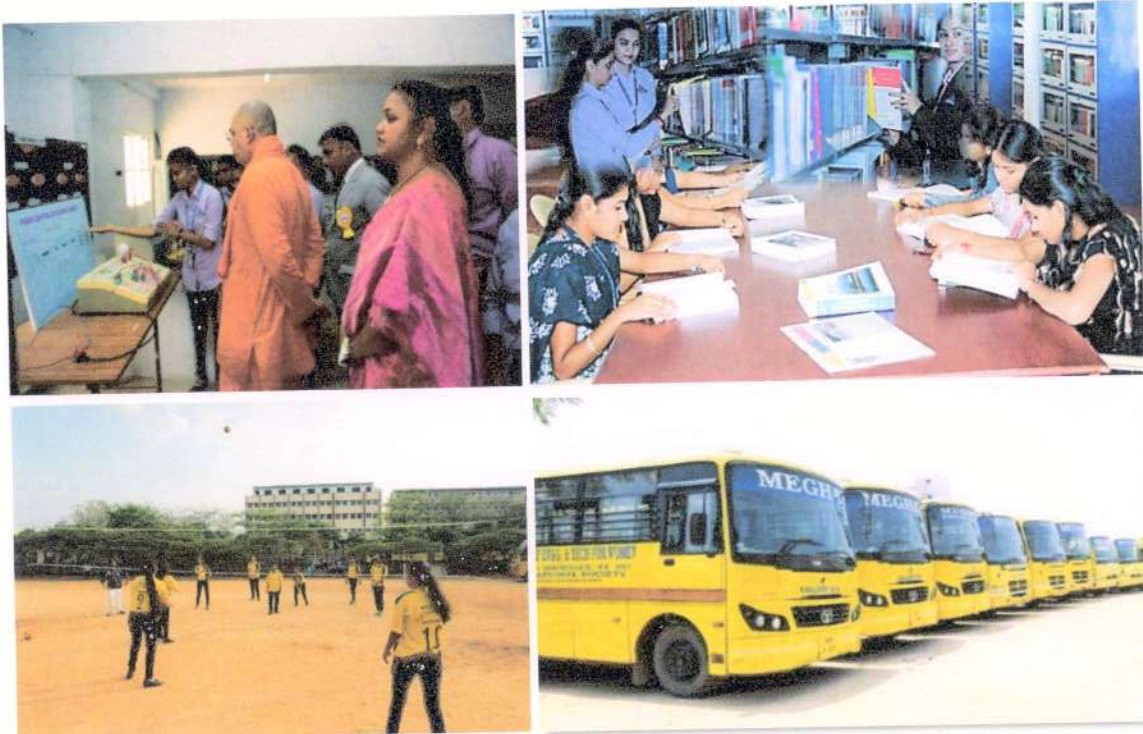
College has several committees like Anti-ragging, Disciplinary, Women Protection Cell, Grievance & Redressal etc for the students.

The MIETW Centre for Engineering Innovation and Development (MCEID) - empowers students to improve human lives through the advancement of technology. MCEID encourages and accelerates development of indigenous products. The centre bridges the gap between Industry and Institute. MCEID aspires to launch high-impact projects and develop visionary leaders by bringing together people from diverse backgrounds and giving them resources to learn, create and share. The Centre seeks to infuse design experiences into student learning through an array of classes and activities. MCEID holds



workshops, lectures, networking events and exhibitions and hosts a competitive MCEID Summer Internship Programme.

The institute has library, which houses a large collections of reading materials such as textbooks, Reference books, Handbooks, Dictionaries and Motivational books. As the course books are concise and specific in nature, elaborate information from reference is the need of our inquisitive minds. MIETW has a well-stocked library with exhaustive collection of nearly 2061 of reference books, Periodicals and journals and other Motivational books. The students and users make good use of the library facilities. The reading room provides an ideal atmosphere for serious reading.



The central library has a floor area of 700 Sq.Mtr. It has 2061 titles and 15163 volumes. The college is subscribed to 50 National and 35 International journals, 2000+ e-journals from DELNET INFOTRAC are also available. The college is a member of SONET, DELNET and National Digital Library of India (an attempt to overcome the serious shortage of Updated information in certain engineering disciplines).

The Sports Department of MIETW is headed by a Physical Education Team supported by two Assistant Physical Directors and two Ground men. The students are participating in various events and games inside and outside the college.

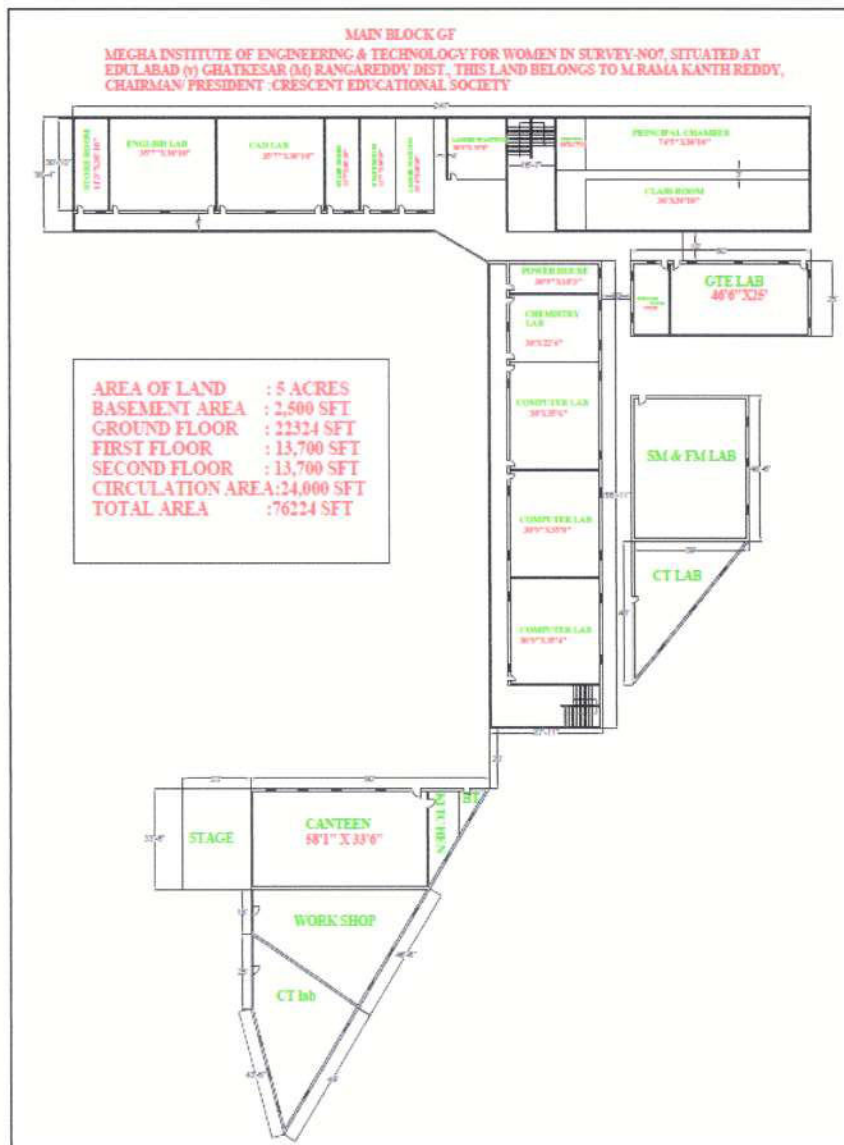
The following play facilities are available in the campus for girls like Cricket, Basketball, Volleyball, Throw Ball, Table Tennis, Badminton, Kho-Kho, Foot Ball, Caroms, Chess, Gym etc.

A Safe and Secure Residential Facility with homely environment is available for students

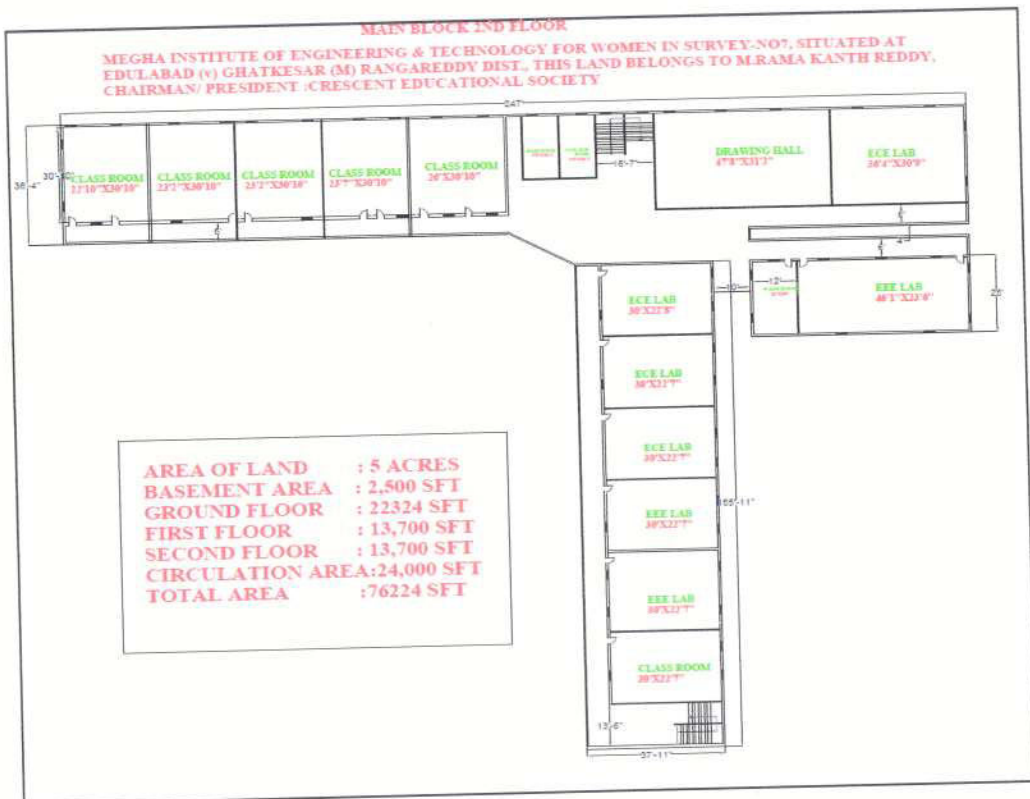
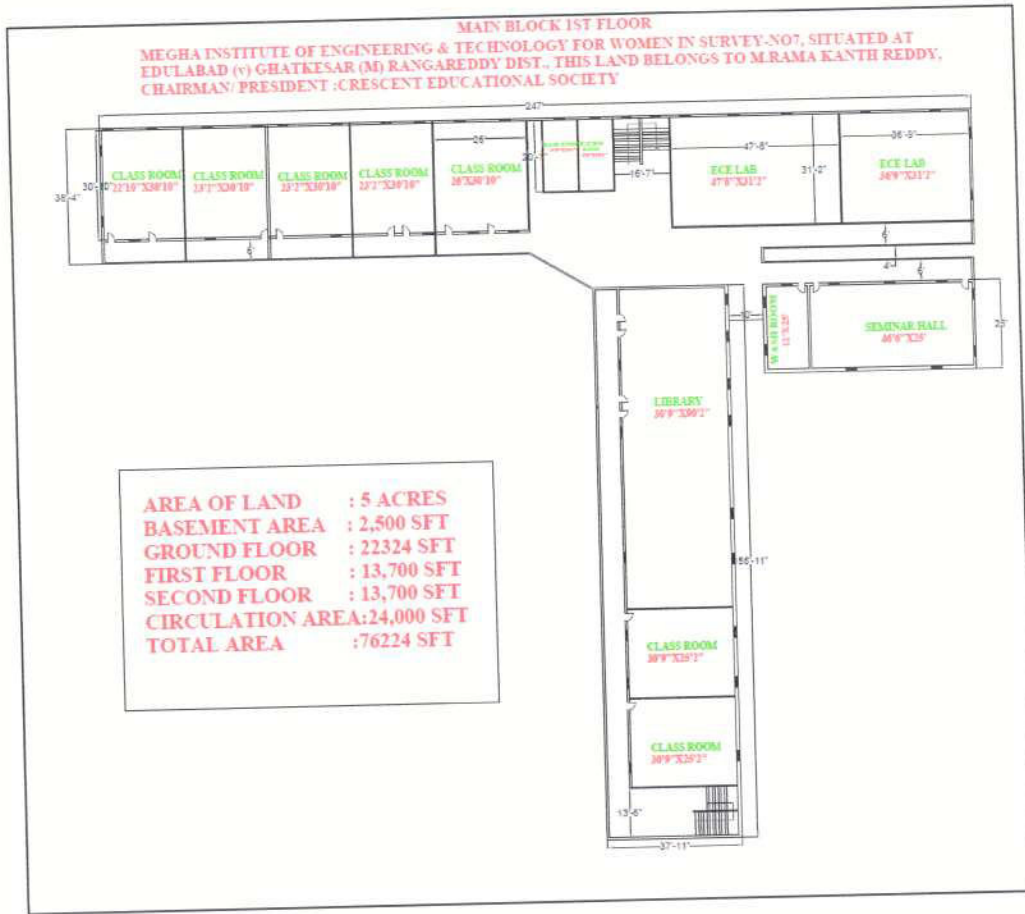
- Spacious and Airy rooms are available.
- Basic necessities like Bed with mattress and pillows, Table, Almirah, Hot water, attached washrooms are available.
- Medical Facilities available.
- Clean and spacious Mess available with dining area where fresh meals provided for Breakfast, Lunch and Dinner.
- Power Back-up facility.

A fleet of 18 buses in a very good condition transfer the students from various parts of the city to the college and back to their localities.

### 2.1. Campus Maps







## 2.2. Campus General Information

Location	Edulabad Ghatkesar	
Total area of the campus	5 Acres	
Total Constructed area	2 Acres	
Area under Green cover	3 Acres	
No. of buildings	4 Blocks(A, B,C,D)	
Source of water (Municipal, Ground water & Tanks)	Ground Water	
Source of electricity (Supplier)	TSSPDCL	
Does your campus have renewable energy sources	No	
Total no. of students	1003	
Total no. of students (Hostellers)	0	
Total no. of students (Daysholars)	1003	
Total no. of faculty	83	
Total no. of teaching faculty (In house)	8	
Total no. of teaching faculty (Staying outside)	75	
Total no. of non-teaching faculty (In house)	0	
Total no. of non-teaching faculty (Staying outside)	25	
Total no. of administrative staff	03	
Total no. of cleaning staff	20	
Total no. of employees for landscape maintenance	05	
Total no. of security staff	6	
Total no. of people visiting/day	Min:10	Max:40

## 2.3. Campus Building Details

SNo	Name of Building	Utility	Built Area (Sfts)
1	Basement area	-	2,500
2	Ground floor	Admin & Classrooms	13,700
3	First Floor	Classrooms	13,700
4	Second Floor	Admin Classrooms	13,700
5	Circulation Area	-	24,000
			67,600



The total campus area is about 5 acres and the total people visiting the area are approximately 1228 people. The water source is ground water and electricity is used from TSSPDCL.

#### 2.4. Transportation

No. of vehicles regular to campus	18
No. of four wheelers (regular)	02
No. of two wheelers (regular)	20
No. of four wheelers (visitors)	10
No. of two wheelers (visitors)	20
No. of students using Public Transport	723
No. of faculty using Public Transport	10
No. of buses (regular)	18
Fuel Consumption per bus / day	10 Litres
Students with own vehicles	20
Faculty with own vehicles	10
Cycle usage (Nos)	0
Does the campus have bicycle points	No
Shuttle services	01

The institute has 18 buses for transportation of the students from various locations of the city. Here about 72.08% of the students use public transport, which indicate the less carbon footprint. On an average 260 litres of diesel is used per month for running these buses.

# Energy Audit



Energy demand in the world is nowadays growing further out of the limits of installable generation capacity. Therefore, future energy demands should be met and improved efficiently and securely. Energy solutions be supported by utilizing renewable energy sources. At present, the contribution of renewable energy to the world primary energy is not high to meet the primary energy and electricity supplies.

Both developed and developing nations are continuing to rely on fossil fuels till now and may be in future. But in developing countries the situation is more inconvenient than that of developed countries. They have been apparently trying to restructure their energy sectors. It seems that is difficult to realize innovations. In the strategy plans of many countries, the sustainable development in relation to the parameters such as economic, social and industrial is supported by their energy policies. New enabling technologies related to renewable energies will also help to reduce environmental costs and thus the energy problems.

Energy audit helps in energy cost optimization, pollution control, safety aspects and suggests the methods to improve the operating and maintenance practices of a campus. It is instrumental in coping with the situation of variation in energy cost availability, reliability of energy supply decision on appropriate energy mix, decision on using improved energy conservation equipment, instrumentations and technology. It is proven that energy saving about 15 to 30% is possible by optimizing use of energy efficient equipment at the time of replacements.

Energy audit would give a positive orientation to the energy cost reduction, preventive maintenance, and quality control programmes which are vital production and utility activities. It will help to understand more about the ways energy utilized and help in identifying the areas where waste can occur and where scope for improvement exists.

The main objectives of conducting energy audit are as follows:

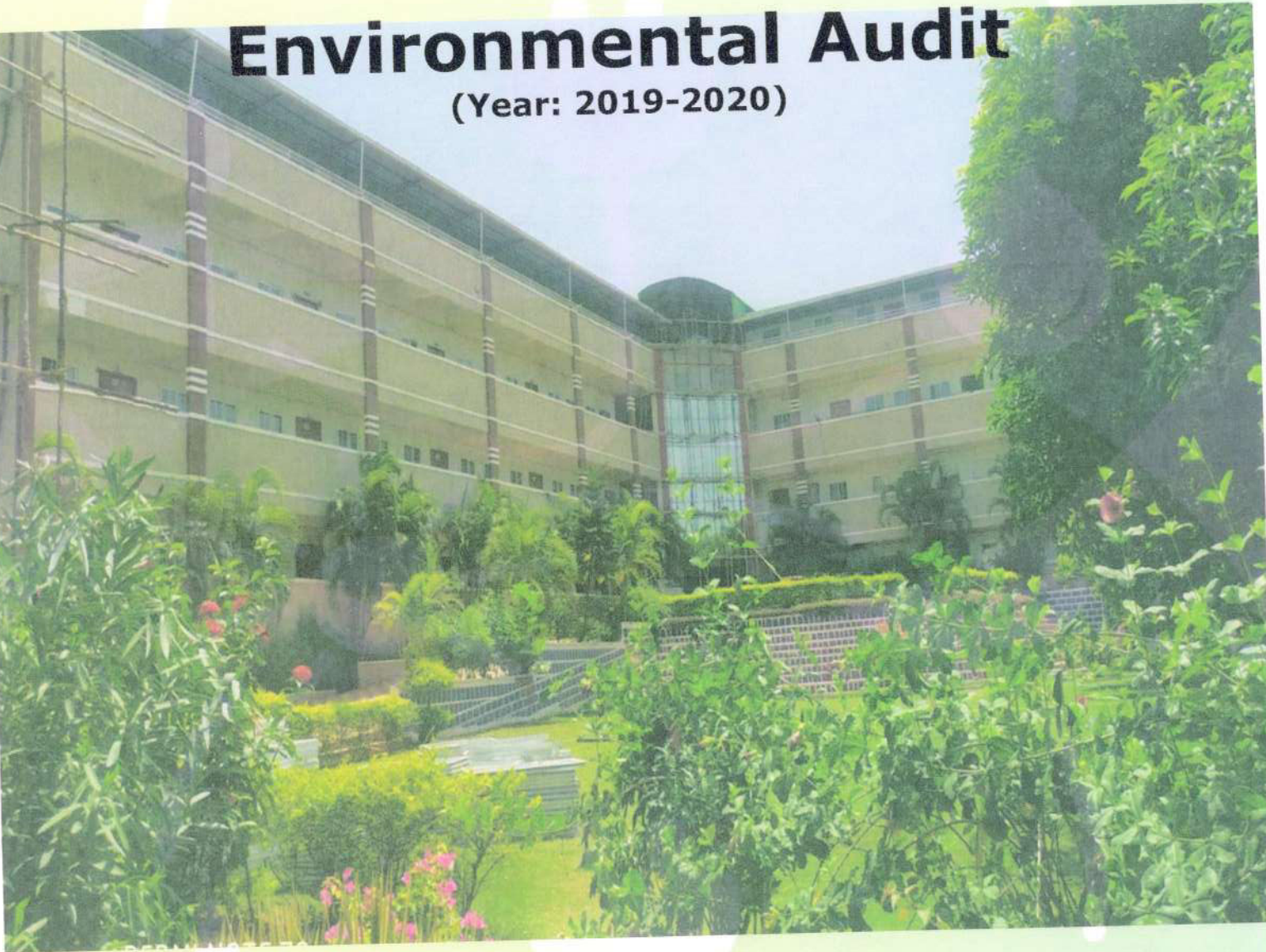
- To study the present pattern of energy consumption
- To identify potential areas for energy optimization
- To recommend energy conservation proposals with cost benefit analysis





**Megha Institute of Engineering and  
Technology for Women**  
Medchal, Telangana

**Environmental Audit**  
(Year: 2019-2020)



*Prepared by*  
**Ecopie Services LLP**  
Hyderabad, Telangana

# TABLE OF CONENTS

<b>SNo</b>	<b>CONTENT</b>	<b>PAGE.NO</b>
1	Executive Summary	01
2	Overview	02-03
3	Institution Profile	04-06
4	Campus General Information	06
5	Maps	06-07
6	Energy Audit	08-11
7	Electricity Consumption	12-14
8	Water Audit	15-17
9	Waste Audit	18-19
10	Student Activities	20-21
11	Recommendations	22



# Executive Summary

The Environment is the most important resource for life. The unsustainable developmental activities ruined the balance of environment. Irresponsible use of natural resources leads to resource depletion and Pollution degraded the environment and disturbed it's rhythm. As a result, we are witnessing several direct and indirect implications. Along with human being all other life forms are getting affected with environmental issues such as climate change, resource depletion, pollution etc. The right to a safe, healthy and ecologically balanced environment as a human right in itself but entails the duty to protection. So, it is compulsory to provide environmental education to protect, manage and minimize the damage to environment.

In India, it is the fundamental duty of every citizen to protect and improve the natural environment. India has been putting efforts on clean energy and sustainable development through various activities and schemes. This need to be properly utilised. We also have several rules to ensure the protection and management of natural resources, Controlling Pollution, Management of waste and regulations to ensure the sustainable development with proper resource management.

Educational Institutions have unique role in Environmental protection. They can show themselves as an example and inspire other institutions to by being a model for efficient use of resources and by following sustainable practices. They can make future generation to think, invent and implement sustainable activities through its curriculum design, research and collaborative efforts with NGOs working in those areas.

There are several certifications and recognitions being provided by Governments and companies encourage the institutions. Environment auditing is a process which helps in identifying and determining whether institutional practices are eco- friendly and sustainable. It is a process of regular identification, quantification, documenting, reporting, and monitoring of environmentally important components in a specified area.

In view of the above, Management has thought to evaluate existing resources of the institution and usage of the resources, so that the proper sustainable plan can be prepared. For this entire process, involved the data collection, review of the documents and transact walk with the expert team.

# Overview

Environmental education enables individuals to develop a deeper understanding of environmental issues and have the skills to make informed and responsible decisions. It also inculcates attitude of concern and provide skill to handle the environmental challenges. Green campus is a concept to build sustainable living practices that are environmental-friendly in educational institutions around the world. Green Campus concept offers an institution the opportunity to take the lead in rethinking its environmental culture and developing new paradigms for solving problems that are local, national, and global with the greater participation of students.

Environmental audit is a management tool comprising systematic, documented, periodic and objective evaluation of how well environmental organization, management and equipment are performing with the aim of helping to safeguard the environment and natural resources by facilitating management control of practices.

It aims to identify environmental compliance, verify environmental responsibility implementation gaps whether they meet stated objectives, along with related corrective actions. Therefore, an Environment audit report is an efficacious resources Resource for management making decisions to improve their environmental performance. It can re-define the organizational culture and bring an environmental friendly behaviour by improved environmental awareness amongst within the institution.

Depending on the types of standards and the focus of the audit, there are different types of environmental audit. Organization of all kinds now recognize the importance of environmental matters and accepts that their environmental performance will be scrutinized by a wide range of interested parties. Environmental auditing is used to investigate, understand and identify.

These are used to help improve existing human activities, with the aim of reducing the adverse effects of these activities on the environment. An environmental auditor will study an organizations environmental effect in a systematic and documented manner and will produce an environmental report.



## **Objectives**

- To review the existing resource availability
- To identify the source of the resources and wastage happening to the technical and usage issues
- To bring out a present status report on environmental compliance
- To adopt the best possible and cost-efficient clean technologies for long term sustenance and reduce the resource depletion.
- To suggest best practices amongst the students at individual level, institutional level and community level.

## **Methodology**

The audit started with questionnaire wherein faculty has mentioned the maps, resources, built up area and green space in the campus. A recce was done by the team of expert for noting the calculations of the resources. Auditing methods are chosen based on the type of information needed to prove the real-life problems assumed in the preliminary study and demonstrate the scale of these problems. After the data analysis, report was prepared with the recommendations for future sustainable development in the campus.

# Institution Profile

Megha Institute of Engineering and Technology for women was established in the year 2008, under the umbrella of Crescent Educational Society. Eminent educationalists involved in the field of education, for over a decade, formed the governing body of the College. This institute have created new trend of innovation in the Ranga Reddy District area. The College is approved by AICTE, New Delhi, and affiliated to JNT University, Hyderabad. In the current global scenario erudite, concept rich, well-trained professionals, form the paramount stipulation of the industry. It is this forethought, that initiated the establishment of this professional institution. Exposure to constantly updated technologies, industry orientation, and proficiency in subject content has been the mantra behind the recent accomplishments. Institute has women engineering college with IIT certification. This institute has recently associated with aakaar IIT Bombay and Technex IIT Varanasi.

## **Vision**

- To become a premier Institute ensuring women's empowerment through holistic education.

## **Mission**

- To provide state-of-the-art infrastructure for students and faculty supporting effective teaching – learning process towards mutual development.
- To nurture and inculcate employability skillset through industry institute interaction policy.
- To equip, enrich and transform the students to be responsible with a strong commitment to the society.

College has several committees like Anti-ragging, Disciplinary, Women Protection Cell, Grievance & Redressal etc for the students.

The MIETW Centre for Engineering Innovation and Development (MCEID) - empowers students to improve human lives through the advancement of technology. MCEID encourages and accelerates development of indigenous products. The centre bridges the gap between Industry and Institute.



MCEID aspires to launch high-impact projects and develop visionary leaders by bringing together people from diverse backgrounds and giving them resources to learn, create and share. The Centre seeks to infuse design experiences into student learning through an array of classes and activities. MCEID holds workshops, lectures, networking events and exhibitions and hosts a competitive MCEID Summer Internship Programme.

The institute has library, which houses a large collections of reading materials such as textbooks, Reference books, Handbooks, Dictionaries and Motivational books. As the course books are concise and specific in nature, elaborate information from reference is the need of our inquisitive minds. MIETW has a well-stocked library with exhaustive collection of nearly 2061 of reference books, Periodicals and journals and other Motivational books. The students and users make good use of the library facilities. The reading room provides an ideal atmosphere for serious reading.

The central library has a floor area of 700 Sq.Mtr. It has 2061 titles and 15163 volumes. The college is subscribed to 50 National and 35 International journals, 2000+ e-journals from DELNET INFOTRAC are also available. The college is a member of SONET, DELNET and National Digital Library of India (an attempt to overcome the serious shortage of Updated information in certain engineering disciplines).

The Sports Department of MIETW is headed by a Physical Education Team supported by two Assistant Physical Directors and two Ground men. The students are participating in various events and games inside and outside the college.

The following play facilities are available in the campus for girls like Cricket, Basketball, Volleyball, Throw Ball, Table Tennis, Badminton, Kho-Kho, Foot Ball, Caroms, Chess, Gym etc.

A Safe and Secure Residential Facility with homely environment is available for students.

- Spacious and Airy rooms are available.
- Basic necessities like Bed with mattress and pillows, Table, Almirah, Hot water, attached washrooms are available.
- Medical Facilities available.
- Clean and spacious Mess available with dining area where fresh meals provided for Breakfast, Lunch and Dinner.
- Power Back-up facility.

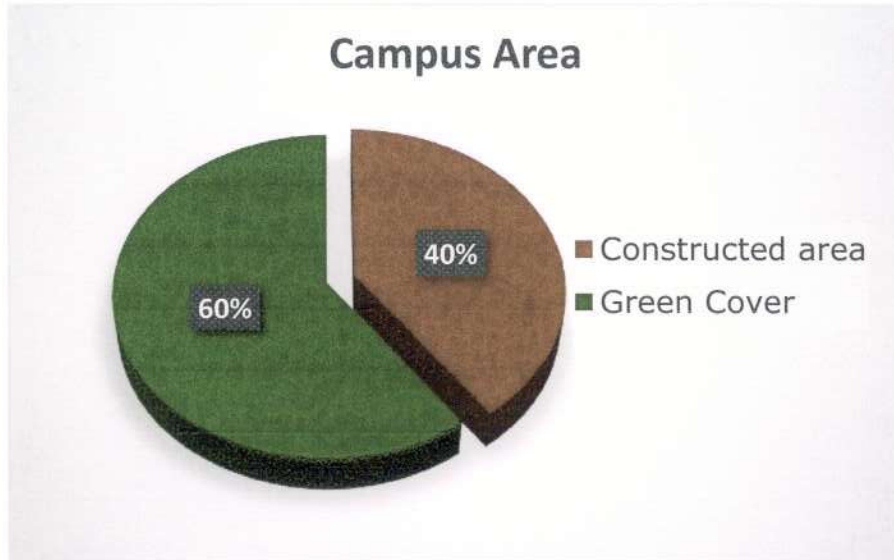
There are about 18 buses in a very good condition transfer the students from various parts of the city to the college and back to their localities.

### Campus Information

Total area of the campus – 5 acres

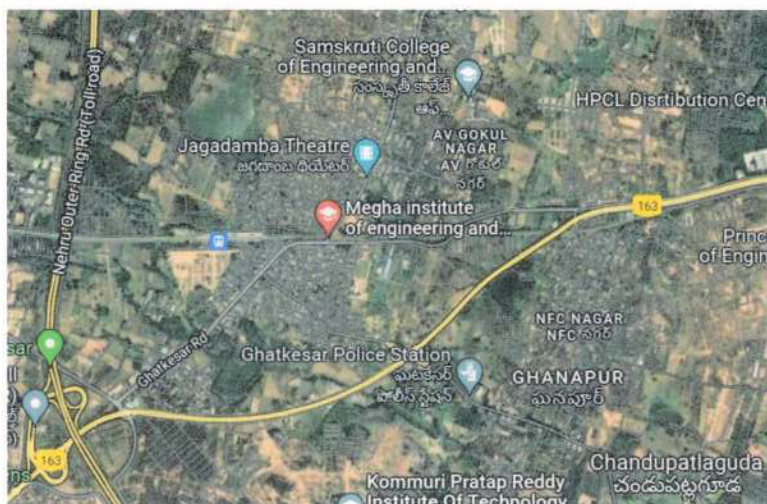
Constructed area – 2 acres

Green Cover – 3 acres

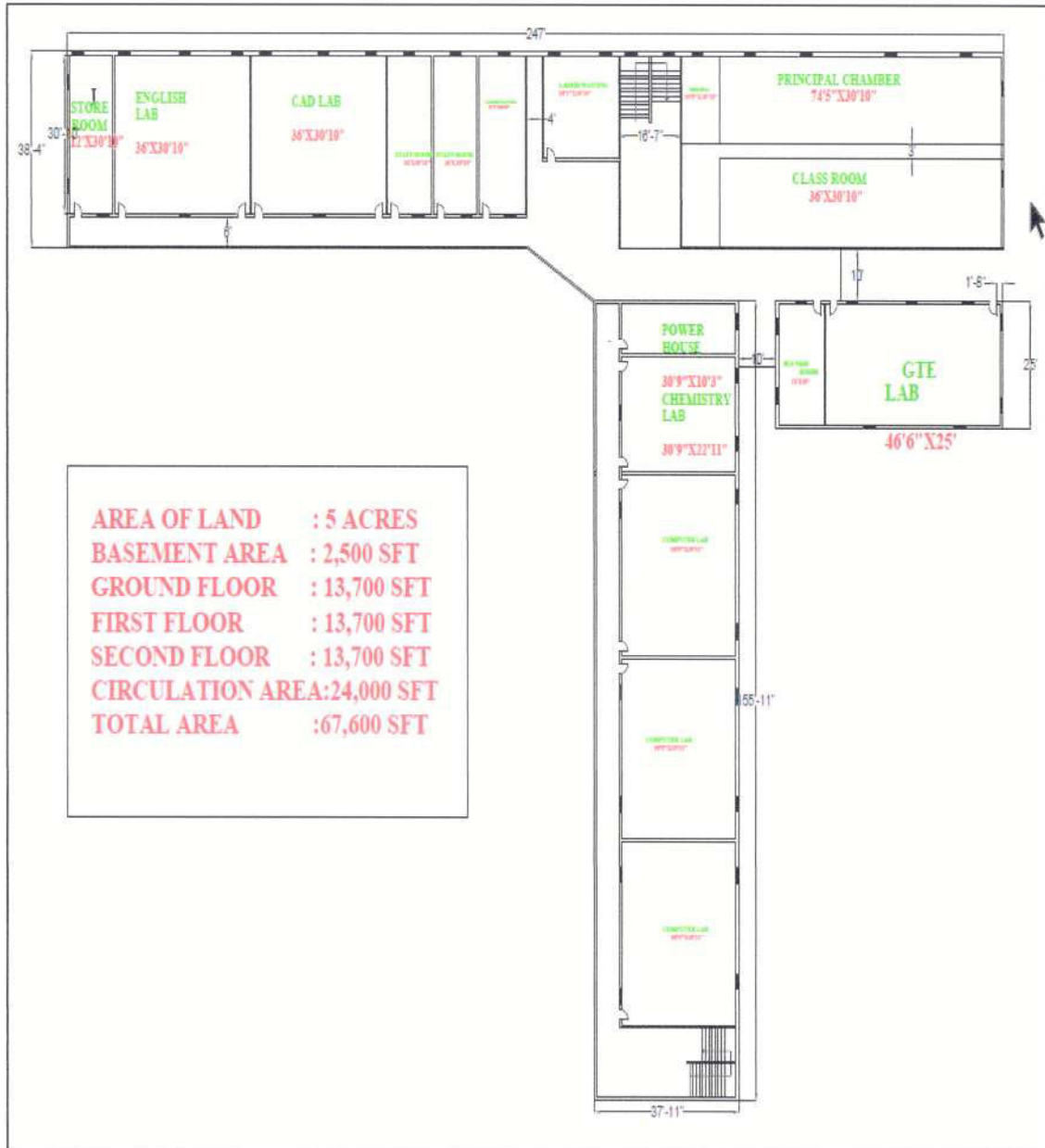


The campus building is of 4 blocks i.e., A,B,C & D. Here source of water is Ground water and electricity is from TSSPCL. The total strength in the college is approximately 1000 students and 83 teacher and non-teaching staff. Further cleaning staff are 6 people and landscape maintenance staff are 5 people.

### College Location & Map







# Energy Audit

Human settlements encompass a variety of buildings. Regardless of the building involved, the audit procedure is basically the same. If more than one facility is involved (as in the case of apartment buildings), an audit of each will be necessary.

An energy audit, sometimes referred to as an energy survey or an energy inventory, is an examination of the total energy used in a particular property. The analysis is designed to provide a relatively quick and simple method of determining not only how much energy is being consumed but where and when. The energy audit will identify deficiencies in operating procedures and in physical facilities. Once these deficiencies have been identified, it will be apparent where to concentrate efforts in order to save energy. The energy audit is the beginning of and the basis for an effective energy-management programme.

No two buildings are identical regarding energy usage. This is due to the possible variables affecting the buildings, e.g., occupancy rates, the building's size and orientation, its geographic location, the type of heating and cooling systems, the amount and types of equipment in use, the type of construction, the level of insulation and so on. Because each building is unique, it is difficult to generalize about energy-consumption patterns, and so it is necessary to conduct an energy audit for each building. Most buildings were probably designed, built and equipped when cheap energy was readily available. Little attention was paid to energy efficiency. Consequently, there is a great potential for improving operating costs of existing buildings.

Energy audit helps in energy cost optimization, pollution control, safety aspects and suggests the methods to improve the operating and maintenance practices of a campus. It is instrumental in coping with the situation of variation in energy cost availability, reliability of energy supply decision on appropriate energy mix, decision on using improved energy conservation equipment, instrumentations and technology. It is proven that energy saving about 15 to 30% is possible by optimizing use of energy efficient equipment at the time of replacements.



Energy audit would give a positive orientation to the energy cost reduction, preventive maintenance, and quality control programmes which are vital production and utility activities. It will help to understand more about the ways energy utilized and help in identifying the areas where waste can occur and where scope for improvement exists.

The main objectives of conducting energy audit are as follows:

- To study the present practices of energy consumption
- To identify potential areas for energy optimization
- To recommend energy conservation proposals with cost benefit analysis

<b>S.No</b>	<b>Item</b>	<b>Value</b>
1	Year of Building Construction	2008
2	Connected Load (kW) or Contract Demand (kVA)	64
3	Installed capacity: DG/ GG Sets (kVA or kW)	480
4	Annual Electricity Consumption, purchased from Utilities (kWh)	18000
5	Annual Electricity Consumption, through Diesel Generating (DG)/Gas Generating (GG) Set (s) (kWh)	500
6	Total Annual Electricity Consumption, Utilities + DG/GG Sets (kWh)	20000
7	Annual Electricity Cost, purchased from Utilities (Rs.)	351234
8	Annual Electricity Cost generated through DG/GG Sets (Rs.)	25000
9	Total Annual Electricity Cost, Utilities + DG/GG Sets (Rs.)	351234
10	What is power factor (less than 1, 1 or above 1)	1
11	Fans/Air Conditioners	7
a	No. of fans	591
b	Conditioned area	2000
c	Non-Conditioned area	0
12	Working hours (e.g. day working /24 hour working)	08

13	Working days/week (e.g. 5/6/7 days per week)	6
14	Installed capacity of Air Conditioning System	2 tones
a	Centralized AC Plant (TR)	No
b	Packaged ACs (TR)	No
c	Window/Split ACs (TR)	07
d	Total AC Load (TR)	480
15	Installed lighting load (kW)	40
16	Equipment Load (kW)*	64
17	Whether sub-metering of electricity consumption for Air Conditioning, Lighting, Plug Loads, etc. done: Yes/No	0
18	HSD (or any other fuel oil used, specify)/Gas Consumption in DG/GG Sets (liters/cu. meters) in the year	10
19	Fuel (e.g FO, LDO, LPG, NG) consumption for generating steam/water heating in the year (in appropriate units)	500
20	Have you implemented a Building Management System (BMS)? (Yes/No)	YES
a	Make and year of installation of the BMS	2009
b	Number of sensors / VRVs in the BMS	10
21	Any other appliances - Coffee machines/Office machinery, etc.,	1
22	No. of street lights in the campus	16
a	Connected to electricity within the campus	YES
b	Connected to electricity outside the campus	NO
23	No. of Gas cylinders used in a month	2
	Weight of the gas cylinders (14.5 or 17.5) any other specific weight	14.5
24	Incandescent Bulbs (halogen)	631
25	Filament bulbs	47
26	Fluorescent tube lights	59

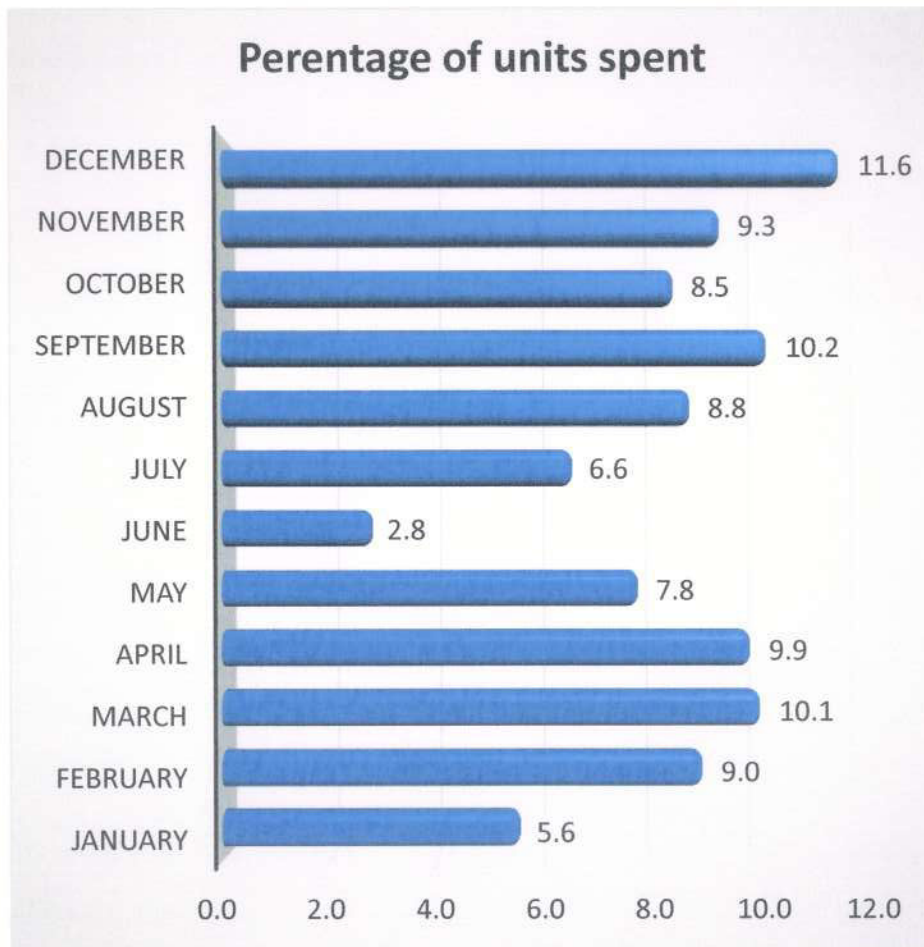


## Equipment Details

Equipment	Nos	No. of hours per day
Computers	340	08
Desktops	44	08
Laptops	4	08
Servers	1	08
Small printers	05	08
Printers/ Xerox	06	08
Fax machine	0	0
Scanners	05	08
Projector	16	08
Sound System	04	10
Televisions	06	10
Inverters	03	24
Air Coolers	07	10
Refrigerators	01	24
Kettles	02	10
Iron Boxes	1	1
Grinders	1	1
Water filters	03	24
Water heaters	1	1
Geezers	1	1
Electronic based lab equipment's	256	1

## Electricity Consumption

Month	Units	Percentage of usage
January	2033	5.6
February	3291	9.0
March	3689	10.1
April	3622	9.9
May	2850	7.8
June	1020	2.8
July	2398	6.6
August	3209	8.8
September	3738	10.2
October	3098	8.5
November	3419	9.3
December	4240	11.6
	<b>36607</b>	





## Electricity Consumption on utilities & DG/GG Sets

Month	kWh	Litres	Amount Spent
January	120	15	5.3
February	32	7	2.5
March	152	9	3.2
April	170	17	6.0
May	250	62	21.8
June	100	21	7.4
July	102	18	6.3
August	92	61	21.5
September	201	19	6.7
October	100	17	6.0
November	106	22	7.7
December	112	15	5.3
	<b>1537</b>	<b>283</b>	



### Pumps and their capacities

Type of pump	Horse Power	Number of units consumed to fill the overhead tank or sump fully	Number of hours operated per day to fill the tank with full capacity
cri	4hp	10000	3

- Most of the electricity consumption is done in the month of December followed by March, April and September months.
- Similarly, the DG sets usage is high in the months of May and September.

### General Transportation Information

No. of vehicles regular to campus	18
No. of four wheelers (regular)	02
No. of two wheelers (regular)	26
No. of four wheelers (visitors)	13
No. of two wheelers (visitors)	23
No. of students using Public Transport	629
No. of faculty using Public Transport	10
No. of buses (regular)	18
Fuel Consumption per bus / day	16 Litres
Students with own vehicles	24
Faculty with own vehicles	17
Cycle usage (Nos)	0
Does the campus have bicycle points	No
Shuttle services	01

The institute has 18 buses for transportation of the students from various locations of the city. Here about 79.65% of the students use public transport, which indicate the less carbon footprint. On an average 416 litres of diesel is used per month for running these buses.



# Water Audit

India is endowed with extraordinarily diverse and distinctive traditional waterbodies found in different parts of the country, commonly known as ponds, tanks, lakes, *vayalgam*, *ahars*, *bawdis*, *talabs* and others. They play an important role in maintaining and restoring the ecological balance. They act as sources of drinking water, recharge groundwater, control floods, support biodiversity, and provide livelihood opportunities to a large number of people.

Currently, a major water crisis is being faced by India, where 100 million people are on the frontlines of a nationwide water crisis and many major cities facing an acute water shortage. The situation will worsen as United Nations and Niti Ayog reports say that the demand for water will reach twice the available supply, and 40 per cent of India's population will not have access to clean drinking water by 2030.

One of the reasons is our increasing negligence and lack of conservation of waterbodies. Since independence, the government has taken control over the waterbodies and water supply.

Water auditing is conducted for the evaluation of facilities of raw water intake and determining the activities for water treatment and reuse. The relevant method that can be adopted and implemented to balance the demand and supply of water. It is therefore essential that any environmentally responsible institution examine its water use practices.

## **Sources of water**

The water source is borewell. The campus has overhead tanks for each building along with bore well. For drinking water RO plants is set up in the campus.

Water audit includes the calculation of water sources, water consumed and best practices to conserve water and recharge the ground water level with in and around the college campus. Both drinking water and water used for green spaces are also calculated.

Source of water (Municipal Supply/ Groundwater (Borewells)/ Tankers (Private or Public)/ Rainwater/ Others	Ground Water
Total water consumption per day (litres)	24,000 Ltrs
No. of bore wells	02
No. of water tankers/day consumed per day	2
Water consumed through water tanks (litres)	12000 Ltrs
Water Storage	1
Overhead tank	12000 Ltrs
Capacity of the tank	12000 Ltrs
Number of times it is filled in a day	2 Times
No. of Sumps	1
Capacity of sumps	4000 Ltrs
Purpose Eg: Drinking, Cleaning & Landscape	All
Potable water consumption	4000
Drinking water used (litres per day) – Mineral water	6000
Purified water within the campus – like RO treatment	6000
In case of canteen facility in the building - Water used for cooking	2000

The water used is from ground water and water is filled in overhead tank which is of 12000 litres capacity. The per capita of water consumption is approximately 8-9 litres a day.



## Floating Population

Total no. of students	1003	
Total no. of students (Hostellers)	NO	
Total no. of students (Day-scholars)	1003	
Total no. of faculty	83	
Total no. of teaching faculty (In house)	24/7	
Total no. of teaching faculty (Staying outside)	24/7	
Total no. of non-teaching faculty (In house)	5	
Total no. of non-teaching faculty (Staying outside)	80	
Total no. of administrative staff	09	
Total no. of cleaning staff	20	
Total no. of employees for landscape maintenance	15	
Total no. of security staff	6	
Total no. of people visiting/day	Min:05	Max:50

As per the floating population presently the water usage is little high and it can be conserved with little bit of action on saving water.

# Waste Audit

The growing amount of waste produced in modern society has a huge impact on the environment. Many of the materials disposed of in the general waste bin can last in the environment anywhere from hundreds to thousands of years. The existence of this waste in the natural environment can cause significant impacts on plants, animals and Pollution.

Lightweight materials like plastic bags and film (such as lolly/chip wrappers) can easily be dispersed from rubbish bins and landfill into the surrounding environment by the wind and rain. Much of this lightweight material presents a range of hazards for wildlife and domestic animals who can become entangled or choke if they accidentally mistake litter for food. The chemical composition of plastic means that it takes a substantial period of time to break down in the environment and is capable of travelling long distances without decomposing. Around 80% of plastic litter found in the ocean has travelled there from inland waterways. Oceanic currents have directed much of this material to a litter-made island in the mid-Atlantic Ocean called the Great Pacific Garbage Patch. Items as large as computer monitors and tyres, as well as plastic twine, bottles and other material have been found here from across the world.

The purpose of the waste audit is to gain a detailed understanding of the types and weights of material being generated. The recommendations can be used to improve the economic and environmental performance of waste management efforts. For this audit, there is a need to discover what waste are being generated and in this which material are recyclables. Further the dispose mechanism adopted for both wet and dry waste are to be considered during audit. All operations produce waste and there is nothing wrong by recognizing it. However today concern is over waste generation and increasing costs of collection and disposal are good reasons to find out how to reduce, increase recycling and try to cut costs.

## **Objectives**

- To evaluate the solid and liquid waste management and their disposal
- To understand the existing best practices and gaps
- To recommend the suitable solutions for the waste disposals



### Waste Source areas

SNo	Source	Types of Waste	Quantity of waste produced per day
1	Canteen	Food, plastic	32 Kg
2	Hostels	Food	No
3	Classrooms	Papers, chalk powder	11 Kg
4	Labs	Papers, E-waste	2
5	Construction Site	Cement & dust	7
6	Garden	Garbage	3
7	Washrooms	Liquid	410 Litres

The waste generated in the campus is 4 tonnes and municipality collect the waste 4 times in a week. Presently the canteen food waste is being composted and liquid waste is sent through an outlet from the campus. All other waste is stored in the campus and disposed as and when the recyclers or municipality collects the waste.

### Dust bins Details

Type	Nos
Small bins	10
Medium size bins	5
Main (big) bins	2

Here small bins are placed in the classrooms and the other bins are placed in the pressure points. Two main bins are arranged to collect all the material. From here the Municipality workers are lifting the solid waste.

# Student Activities

Students join NSS and Environmental Clubs in the college to participate various activities organized by college. Few core group students are also taking charge of activities on behalf of college. This shows their active involvement and interest towards environment. The following are some of the activities done during the year:

S.No	Name of the Event	No of Students Participated	No of Faculty Participated
1	National Women's Day	120	13
2	Energy Conservation Day	30	6
3	Megha International Women's Empowerment Summit'20	140	16
4	Road Safety Awareness	125	10
5	World Literacy Day	40	08
6	Importance Of Blood Donation	120	06
7	Fire Safety Awareness Programme	119	24
8	Mask And Sanitizer Distribution	60	5







# Recommendations

- Sustainable solutions like solar power system and LED lights installation have to be done for increasing energy efficiency.
- Power consumption in the peak months is to be reduced with activities involving students
- Vehicle pooling can be promoted for both students and faculty. Initially this can be declared by the management or through student groups on particular days.
- Sewage treatment plant is to be setup for treating the wastewater.
- Rainwater harvesting structures are to be technically built to conserve the ground water as well as the water for future use.
- Repair leaking taps and pipes at regular intervals to conserve water.
- Specific Waste Management Plan should be developed and adopted to manage solid waste within the campus.
- Source segregation has to be encouraged in the campus and for this twin bins are to be arranged
- Compost unit has to be properly maintained and scientifically used
- The other dry waste is to be collected separately and sent to concerned recyclers
- Need to be seen that the campus waste is not going to dump yard
- Campus can be made plastic free zone with more prominent sign boards. Usage of single use plastic is to be banned completely from the campus especially in the plastic bags, glasses, cups, thermacole cups/ plates.
- Environmental education should be part of curriculum and activities irrespective of the subjects. Students should be made part of environmental activities through NSS & NGC clubs.
- Students are to encourage to do innovative activities at this level so that they think on eco-friendly solutions.
- Environmental plan for strategic implementation of eco-friendly practices is to be framed every year. This help to streamline the existing good practices that are already being implemented.
- Environment auditing is to be carried out every year to evaluate the outcomes of the environmental activities.

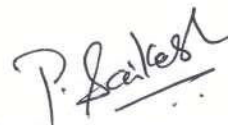


JANUARY 7, 2021

## Certificate of Appreciation

This is to acknowledge that the efforts taken up by the management of Megha Institute of Engineering and Technology for Women, Medchal, Telangana for successful completion of Environmental Audit and Green Audit of their institution at satisfactory level for the year 2020-21.

The efforts made by the team in the institute are highly commendable. We also appreciate the college management for their interest towards environment and sustainability.



CEO, Ecopie Services LLP



Principal  
Megha Inst. of Engg. & Tech for Women  
Edulabad, Ghatkesar (Mdl),  
Medchal Dist-501 301

7.1.6: Quality audits on Environment and energy are regularly undertaken by the Institution and any awards received for such green campus initiatives.

### **Beyond the Campus Environmental Promotion activities**

<b>S.No</b>	<b>YEAR</b>	<b>ACITIVITES</b>
1	2021	Haritha Haram Program
2	2020	World Earth Day
3	2020	Energy Conservation Day
4	2019	Swachh Gram
5	2019	Plantation Drive
6	2018	Water Conservation Day
7	2018	World Environmental Day
8	2018	Haritha Haram Program
9	2018	Plant Distribution Program
10	2017	Plantation Drive at ZPHS School
11	2017	Haritha Haram
12	2017	My Campus – Swachh Campus
13	2017	Sapling Distribution Program
14	2016	My Earth – My Duty



PRINCIPAL  
MEGHA INSTITUTE OF ENGINEERING  
AND TECHNOLOGY FOR WOMEN.  
Edulabad (V), Medchal (D), Telangana State.





# MEGHA INSTITUTE OF ENGINEERING AND TECHNOLOGY FOR WOMEN

(Approved by AICTE & Affiliated to JNTUH)

SY. NO. 7, EDULABAD (V), GHATKESAR (M), MEDCHAL (D), TELANGANA - 501301

---

No. MIETW / NSS / 2021 / FEB

DATE: 12-02-2021

## CIRCULAR

### HARITHA HARAM PROGRAMME

There College will beorganizing 'HARITHA HARAM PROGRAMME' ON 17<sup>TH</sup> February 2021 at 10:30 Am in the college premises. All the staff and Students are advised to attend the program without fail and make it a grand success.

PRINCIPAL

Principal

Megha Inst. of Engg. & Tech. for Women  
Edulabad (V), Ghatkesar (M),  
Medchal Dist, T.S-501 301.

CC:

1. All HOD'S
2. copy to circulate and displayed in the notice board.



## MEGHA INSTITUTE OF ENGINEERING AND TECHNOLOGY FOR WOMEN

(Approved by AICTE & Affiliated to JNTUH)

SY. NO. 7, EDULABAD (V), GHATKESAR (M), MEDCHAL (D), TELANGANA - 501301

### PROGRAM REPORT

Name of the Event / Topic	Haritha Haaram Program				
Date of Event	17 <sup>th</sup> Feb 2021		Venue	Ghatkesar Village	
Total No. of Participants :	59	No of Student Participants	49	No of Faculty /Non Teaching Participants	10
Name of the Coordinator	Mr. K MADHU BABU, Asst Professor, MBA Department, NSS UNIT-MIETW				

#### Description of the Program:

The main description of the Haritha-Haram Scheme is to transform the Telangana State into a Green-State by planting trees, which may cover up to at least one-third of the state's geographical areas.

#### Event Photos:



Principal  
Megha Inst. of Engg. & Tech. for Women  
Edulabad (V), Ghatkesar (M),  
Medchal Dist, T.S-501 301.

Principal  
Megha Inst. of Engg. & Tech. for Women  
Edulabad (V), Ghatkesar (M),  
Medchal Dist, T.S-501 301.





**MEGHA INSTITUTE OF ENGINEERING AND TECHNOLOGY FOR WOMEN**

(Approved by AICTE & Affiliated to JNTUH)

SY. NO. 7, EDULABAD (V), GHATKESAR (M), MEDCHAL (D), TELANGANA - 501301

---

No. MIETW / NSS / 2020 / APRIL

DATE: 17-04-2020

**CIRCULAR**

**WORLD HEALTH DAY**

The College will celebrate 'WORLD HEALTH DAY' ON 22<sup>ND</sup> April 2020 at 10:30 Am in the college premises. All the staff and Students are advised to attend the program without fail and make it a grand success.

PRINCIPAL

Principal

Megha Inst. of Engg. & Tech. for Women  
Egulabad (V), Ghatkesar (M),  
Medchal Dist, T.S-501 301.

CC:

1. All HOD'S
2. Copy to circulate and displayed in the notice board.



# MEGHA INSTITUTE OF ENGINEERING AND TECHNOLOGY FOR WOMEN

(Approved by AICTE & Affiliated to JNTUH)

SY. NO. 7, EDULABAD (V), GHATKESAR (M), MEDCHAL (D), TELANGANA - 501301

## PROGRAM REPORT

<b>Name of the Event</b>	<b>WORLD EARTH DAY</b>				
<b>Date of Event</b>	22/04/2020		<b>Venue</b>	GHATKESAR VILLAGE	
<b>Total No. of Participants:</b>	<b>42</b>	No of Student Participants	<b>36</b>	No of Faculty Participants	<b>06</b>
<b>Name of the Coordinator</b>	<b>Mr Mohd Abdul Hafeez, Asst Professor, CSE Department, NSS UNIT-MIETW</b>				

Earth Day is celebrated all over the world on 22nd April every year. This day was established for spreading awareness about the environment and its safety. NSS volunteers of Megha Institute of Engineering and Technology for Women celebrated National Earth Day on 22nd April 2020 and encouraged everyone towards environmental preservation.

On this occasion Volunteer of MIETW selected Ghatkesar Village to create awareness among the people of the village. Volunteer divided into groups and cover all the village, volunteers also made various posters in order to aware the public with the significance of environmental preservation.

### EVENT PHOTOS:



NSS Volunteer MIETW showing the emotion of earth to the villager through this beautiful painting

PRINCIPAL  
MEGHA INSTITUTE OF ENGINEERING  
AND TECHNOLOGY FOR WOMEN.  
Edulabad (V), Medchal (D), Telangana State.





# MEGHA INSTITUTE OF ENGINEERING AND TECHNOLOGY FOR WOMEN

(Approved by AICTE & Affiliated to JNTUH)

SY. NO. 7, EDULABAD (V), GHATKESAR (M), MEDCHAL (D), TELANGANA - 501301

---

No. MIETW / NSS / 2020 / FEBRUARY

DATE: 10-02-2020

## CIRCULAR

### ENERGY CONSERVATION DAY

The College will be celebrate 'ENERGY CONSERVATION DAY' ON 14<sup>th</sup> February 2020 at 10:30 Am ZPH SCHOOL EDULABAD. All the staff and Students are advised to attend the program without fail and make it a grand success.

PRINCIPAL

Principal

Megha Inst. of Engg. & Tech. for Women  
Edulabad (V), Ghatkesar (M),  
Medchal Dist, T.S-501 301.

CC:

1. All HOD'S
2. Copy to circulate and displayed in the notice board.



# MEGHA INSTITUTE OF ENGINEERING AND TECHNOLOGY FOR WOMEN

(Approved by AICTE & Affiliated to JNTUH)

SY. NO. 7, EDULABAD (V), GHATKESAR (M), MEDCHAL (D), TELANGANA - 501301

## PROGRAM REPORT

<b>Name of the Event / Topic</b>	<b>ENERGY CONSERVATION DAY</b>				
<b>Date of Event</b>	14/02/2020	<b>Venue</b>	ZPHS SCHOOL EDULABAD		
<b>Total No. of Participants :</b>	<b>36</b>	No of Student Participants	<b>30</b>	No of Faculty Participants	<b>6</b>
<b>Name of the Coordinator</b>	<b>Mr. Mohd Abdul Hafeez, Asst Professor, CSE Department, NSS UNIT-MIETW</b>				


MEGHA INSTITUTE OF ENGINEERING AND TECHNOLOGY FOR WOMEN, National Service Scheme (NSS) Department of CSE has conducted Awareness program on "Electricity Conservation Awareness" on 14<sup>th</sup> Feb 2020 at Edulabad village ZPHS. We started at MIETW campus by 10 am by college Bus. Soon after arrival, we meet the principal of the school and take the permission form the principal, after principal permission we Set the Projector in the classes, and explain the school students about the reason why we visited the school. Students given presentation on Energy Conservation in detail and its importance and they also had given the tips to how to conserve the energy.

After that MIETW Student had interacted with School Children's, They clear all the doubts which they are having in understandable manner. Students feel very happy and they thank all the MIET students for providing awareness about the energy conservation.

We thank the principal for giving the permission and we give memento as memory of the event. We left the school by 2.00 PM and reach the college by 2.30 PM.

Students feel very happy after this event, they show positive response to participate in this type of event in future also.

6

  
Principal  
Megha Inst. of Engg. & Tech for Women  
Edulabad, Ghatkesar (Mdl),  
Medchal Dist-501 301

  
COORDINATOR  
MIETW-NSS

NSS Co-ordinator

Megha Institute of Engg. and Tech For Women  
Edulabad, Ghatkesar (M), Medchal Dist T.S-501301



EVENT PHOTOS:



Student giving Introduction about Energy Conservation



Students Explaining about What is Energy



Students are attentively listening the Presentation

Megha Inst. of Engg. & Tech for Women  
Eduabad, Ghatkesar (Md),  
Medchal Dist-501 301

COORDINATOR  
MIETW-NSS

NSS Co-ordinator  
Megha Inst. of Engg. & Tech For Women  
Eduabad/Ghatkesar (Md), Medchal Dist TS-501301



# MEGHA INSTITUTE OF ENGINEERING AND TECHNOLOGY FOR WOMEN

(Approved by AICTE & Affiliated to JNTUH)

SY. NO. 7, EDULABAD (V), GHATKESAR (M), MEDCHAL (D), TELANGANA - 501301

---

No. MIETW / NSS / 2019 / NOVEMBER

DATE: 21-11-2019

## CIRCULAR

### SWACH GRAM PROGRAME

The College will organize 'SWACH GRAM PROGRAME' ON 26th November 2019 at 10:30 Am EDULABAD VILLAGE. All the staff and Students are advised to attend the program without fail and make it a grand success.

PRINCIPAL

Principal

Megha Inst. of Engg. & Tech. for Women  
Edulabad (V), Ghatkesar (M),  
Medchal Dist, T.S-501 301.

CC:

1. All HOD'S
2. Copy to circulate and displayed in the notice board.





# MEGHA INSTITUTE OF ENGINEERING AND TECHNOLOGY FOR WOMEN

(Approved by AICTE & Affiliated to JNTUH)

SY. NO. 7, EDULABAD (V), GHATKESAR (M), MEDCHAL (D), TELANGANA - 501301

## PROGRAM REPORT

Name of the Event / Topic	SWACH GRAM				
Date of Event	26/11/2019	Venue	EDULABAD VILLAGE		
Total No. of Participants:	67	No of Student Participants	60	No of Faculty Participants	07
Name of the Coordinator	MR MOHD ABDUL HAFEEZ , ASST PROF, CSE DEPARTMENT, NSS-UNIT MIETW				

NSS department of ECE MIETW has Conducted "Swachhta Edulabad" Event on 26<sup>th</sup> Nov 2019 in Edulabad village by the NSS Cell. On the day of the event, all the NSS volunteers started from the college at 9 am on a bus and reached the respective places by 9.45 am. The main theme of the NSS cell is to create a social awareness among students. After reaching the village, volunteers met the village sarpanch and identified the places for Swach Bharath activity. Three places were identified including government elementary school and underpass bridges. Volunteers also planned to conduct an awareness program in the school children about basic personal hygiene to avoid seasonal fevers.

All the volunteers actively took part in the event and participated in cleaning of the school and roads. Some volunteers participated in awareness programs. Each volunteer of the awareness program was given a group of school children to create individual awareness on personal hygiene. Volunteers cleaned surroundings of school which were filled with garbage and unwanted plants. Some of the volunteers went house-to-house to encourage cleanliness in the village. We explained how important it is to keep their premises clean and tidy to avoid seasonal fevers

*[Signature]*  
Principal  
Megha Inst. of Engg. & Tech for W.  
Edulabad, Ghatkesar (M.D.)  
Medchal Dist-501 301

and several illnesses. All the villagers supported us which motivated us to conduct more events in the same village in future. Faculty from the Department of ECE and NSS program officers of the units participated and coordinated the event with self-motivation.

### EVENT PHOTOS



  
Principal  
Megha Inst. of Engg. & Tech for Women  
Eduatabad, Ghatkesar (Mdi),  
Medinipur Dist- 751 301

  
Coordinator  
MIETW-NSS

NSS Co-ordinator  
Megha Institute Of Engg. And Tech For Women  
Eduatabad, Ghatkesar (Mdi), Medinipur Dist-751301





No.MIETW/NSS/2021/Aug/

Date : 20-08-2019

**CIRCULAR**  
**PLANTATION DRIVE**

It happy to announce you the College NSS- Unit has planned to organize “**PLANTATION DRIVE** ” on 21/08/2019 at 11.00 AM at MIETW Campus.

As such, it is advised that all the students to attend this event and make it grand success.

**Coordinator**

**Principal**

CC:

1.Copy to all HOD's-CSE,ECE,EEE,CE,MBA,H&S.

2.Copy of Circular to be displayed at Department Notice Board.

  
PRINCIPAL  
MEGHA INSTITUTE OF ENGINEERING  
AND TECHNOLOGY FOR WOMEN.  
Edulabad (V), Medchal (D), Telangana State.



**PROGRAM REPORT**

<b>Name of the Event / Topic</b>	<b>PLANTATION DRIVE</b>				
<b>Date of Event</b>	21/08/2019		<b>Venue</b>	MIETW CAMPUS	
<b>Total No. of Participants :</b>	<b>75</b>	No of Student Participants	<b>70</b>	No of Faculty Participants	<b>05</b>
<b>Name of the Coordinator</b>	<b>Mr Mohd Abdul Hafeez, Asst Professor, CSE Department, NSS UNIT-MIETW</b>				

Megha Institute of Engineering and Technology for Women National Service Scheme Has Conducted "Plantation Drive" on 21<sup>st</sup> Aug 2019 in one of the villages Edulabad. As a part of this, NSS Volunteers, NSS In charge and Faculty Members from department of CSE are involved. On the day of the event, all the NSS volunteers, NSS faculty In charge and four Faculty Members of the parent department started from the college at 9.30 am in bus and reached the 'by 10:00 am. After reaching the Edulabad , all the volunteers are again divided into 18 groups by the faculty in-charge with a faculty along with them. All the 18 groups went in four directions from the Gram - Panchayat Office of Edulabad, to ensure that the volunteers covered most of the village premises.

Program Officer and some volunteers went to Panchyathi office and distributed a sampling to president and started the plantation event, and secretary has discussed with program officer to plan further events which can help and growth of village.

Some of our Volunteers had visited every house and distributed samplings and made them aware of importance of trees and adverse effect of deforestation. Most of the villagers showed a great interest towards planting trees and, they gave an assurance that they will take care of them.

Some of the villagers interacted with the volunteers and shared their feelings and problems with them. Our volunteers listened to their problems and made them feel comfortable to make them happy by giving a hope that they will pass all the problems in the village to the Panchayat & Govt. to take necessary actions to solve the problems in the village.

  
**PRINCIPAL**  
MEGHA INSTITUTE OF ENGINEERING  
AND TECHNOLOGY FOR WOMEN.  
Edulabad (V), Medchal (D), Telangana State.






**NSS Coordinator Briefing Students About the Plantation Drive**



**NSS Coordinator Along with NSS Volunteers Taking Permission From The Principal ZPHS**



**NSS Volunteers Taking Group Photo before the Plantation Drive**

  
PRINCIPAL  
MECHA INSTITUTE OF ENGINEERING  
AND TECHNOLOGY FOR WOMEN  
Edulabad (V), Medchal (D), Telangana State.



**MEGHA INSTITUTE OF ENGINEERING AND TECHNOLOGY FOR WOMEN**

(Approved by AICTE & Affiliated to JNTUH)

SY. NO. 7, EDULABAD (V), GHATKESAR (M), MEDCHAL (D), TELANGANA - 501301

---

No. MIETW / NSS / 2018 / MARCH

DATE: 19-03-2018

**CIRCULAR**

**WATER CONSERVATION DAY.**

The college will Celebrate 'WATER CONSERVATION DAY.ON 3rd August 2018 at 10:30 Am at Mairipally Gudam village. All the staff and Students are advised to attend the program without fail and make it a grand success.

PRINCIPAL

Principal

Megha Inst. of Engg. & Tech. for Women  
EduLabad (V), Ghatkesar (M),  
Medchal Dist, T.S-501 301.

CC:

1. All HOD'S
2. Copy to circulate and displayed in the notice board.





# MEGHA INSTITUTE OF ENGINEERING AND TECHNOLOGY FOR WOMEN

(Approved by AICTE & Affiliated to JNTUH)

SY. NO. 7, EDULABAD (V), GHATKESAR (M), MEDCHAL (D), TELANGANA - 501301

## PROGRAM REPORT

<b>Name of the Event</b>	<b>WATER CONSERVATION DAY</b>			
<b>Date of Event</b>	22/03/2018	<b>Venue</b>	MIETW CAMPUS	
<b>Total No. of Participants:</b>	No of Student Participants		No of Faculty Participants	
<b>Name of the Coordinator</b>	<b>Mr Mohd Abdul Hafeez, Asst Professor, CSE Department, NSS UNIT-MIETW</b>			

Emphasising on the importance of conservation of groundwater, World Water Day is being celebrated globally. World Water Day is observed every year on March 22 to celebrate water and raises awareness of the 2.2 billion people living without access to safe water. The day urges the world to take action to tackle the global water crisis.

NSS Unit of Megha Institute of Engineering and Technology for Women organized a Poster Presentation Competition on CONSERVATION OF GROUNDWATER on the occasion of WORLD WATER DAY on 22-03-2018. II year B.Tech Students are actively participated in the competition and presented their ideas regarding the water conservation methods like rainwater harvesting pits, reusing the wastewater etc. 19 students have actively participated in the competition.

### EVENT PHOTOS:



Students of MIETW Making Poster for Presentation on the occasion of World Water Day

PRINCIPAL  
MEGHA INSTITUTE OF ENGINEERING  
AND TECHNOLOGY FOR WOMEN.  
Edulabad (V), Medchal (D), Telangana State.



No.MIETW/NSS/2018/

Date : 04-06-2018

**CIRCULAR**

**WORLD ENVIRONMENTAL DAY**

It happy to announce you the College NSS- Unit has planned to organize “**WORLD ENVIRONMENTAL DAY**” on 05/06/2018 at 11.00 AM at MIETW Campus.

As such, it is advised that all the students of CSE FINAL year to attend this event and make it grand success.

**Coordinator**

**Principal**

CC:

- 1.Copy to all HOD's-CSE,ECE,EEE,CE,MBA,H&S.
- 2.Copy of Circular to be displayed at Department Notice Board.

Principal  
Megha Inst. of Engg. & Tech. for Women  
Edulabad (V), Ghatkesar (M),  
Medchal Dist, T.S-501 301.

**PRINCIPAL**  
MEGHA INSTITUTE OF ENGINEERING  
AND TECHNOLOGY FOR WOMEN.  
Edulabad (V), Medchal (D), Telangana State.



**PROGRAM REPORT**

<b>Name of the Event / Topic</b>	<b>WORLD ENVIRONMENTAL DAY</b>				
<b>Date of Event</b>	05/06/2018		<b>Venue</b>	EDULABAD VILLAGE	
<b>Total No. of Participants :</b>	<b>65</b>	No of Student Participants	<b>50</b>	No of Faculty Participants	<b>15</b>

Megha Institute of Engineering and Technology for Women National Service Scheme and Department of Computer Science Engineering jointly observed World Environmental Day on 5th June 2018. In this connection Tree Plantation programme was conducted at Edulabad Village ,Ghatkesar Mandal. DR M A Muzeer advised to the students to protect Environment through plantation drive. Vice Pricipal Mr Sai Venkata Krishna, HOD CSE Mr Venkateshwara Rao, HOD ECE Mr Anjaya , HOD EEE Mr Santosh Kumar, HOD Civil Mr Sudhakar, HOD H&S Mrs Padmini, NSS Programme Coordinator Mr Mohd Abdul Hafeez & Mr K Madhu Babu, Maintenance Incharge Mr Balreddy, Garden Incharge Mr.Dhoti Reddy, Transport Incharge Mr. Alwal Reddy also participated.

**EVENT PHOTOS:**




**PRINCIPAL**  
**MEGHA INSTITUTE OF ENGINEERING**  
**AND TECHNOLOGY FOR WOMEN.**  
 Edulabad (V), Medchal (D), Telangana State.



# MEGHA INSTITUTE OF ENGINEERING AND TECHNOLOGY FOR WOMEN

(Approved by AICTE & Affiliated to JNTUH)

SY. NO. 7, EDULABAD (V), GHATKESAR (M), MEDCHAL (D), TELANGANA - 501301



  
**PRINCIPAL**  
MEGHA INSTITUTE OF ENGINEERING  
AND TECHNOLOGY FOR WOMEN.  
Edulabad (V), Medchal (D), Telangana State.





No. MIETW/NSS/2018/Aug/

Date : 20-08-2018

**CIRCULAR**  
**HARITA HARAM**

It happy to announce you the College NSS- Unit has planned to organize “**HARITA HARAM PGROGRAMME** ” on 21/08/2018 at 11.00 AM at MIETW Campus.

As such, it is advised that all the students of all year to attend this event and make it grand success.

**Coordinator**

**Principal**

CC:

- 1.Copy to all HOD's-CSE,ECE,EEE,CE,MBA,H&S.
- 2.Copy of Circular to be displayed at Department Notice Board.

Principal  
Megha Inst. of Engg. & Tech. for Women  
Edulabad (V), Ghatkesar (M),  
Medchal Dist, T.S-501 301.

PRINCIPAL  
MEGHA INSTITUTE OF ENGINEERING  
AND TECHNOLOGY FOR WOMEN.  
Edulabad (V), Medchal (D), Telangana State.

**PROGRAM REPORT**

<b>Name of the Event / Topic</b>	<b>HARITA HARAM-2018</b>				
<b>Date of Event</b>	21/08/2018		<b>Venue</b>	MIETW CAMPUS	
<b>Total No. of Participants :</b>	<b>101</b>	No of Student Participants	<b>89</b>	No of Faculty Participants	<b>12</b>
<b>Name of the Coordinator</b>	<b>Mr Mohd Abdul Hafeez, Asst Professor, CSE Department, NSS UNIT-MIETW</b>				

Megha Institute of Engineering and Technology for Women- NSS Unit has organized "HARITHAHARAM" in our campus on 21<sup>st</sup> Aug, 2018 with great fervor. The program has started with our principal Dr Venu Gopal lighting the traditional lamp. For this memorable event, all heads of the departments, staff members and students have participated in this programme.

Telangana Chief Minister K Chandrashekar Rao started the programme on July 3, 2015. This is a Telangan Flagship effort to revitalise degraded forests and safeguard them from dangers like smuggling, encroachment, fire, and grazing. It used a watershed approach to implement rigorous soil and moisture conservation measures.

The principal Dr Venu Gopal started planting trees in the beginning of the programme on this great occasion, several student staff have attended and made this programme successful. We bring different types of plants like neem ,mango,jamun etc from GHMC. saplings were planted in different areas of college like beside sidewalk, on divider, around ground etc

**Event Photos:**







## MEGHA INSTITUTE OF ENGINEERING AND TECHNOLOGY FOR WOMEN

(Approved by AICTE & Affiliated to JNTUH)

SY. NO. 7, EDULABAD (V), GHATKESAR (M), MEDCHAL (D), TELANGANA - 501301

---

No. MIETW / NSS / 2018 / AUGUST

DATE: 01-08-2018

### CIRCULAR

### PLANT DISTRIBUTION PROGRAMME.

The Collegewill organize 'PLANT DISTRIBUTION PROGRAMME ON 3<sup>rd</sup> August 2018 at 10:30 Am at Marrisally Gudam village. All the staff and Students are advised to attend the program without fail and make it a grand success.

*Madh*

PRINCIPAL

*Useg*

Principal

Megha Inst. of Engg. & Tech. for Women  
Egulabad (V), Ghatkesar (M),  
Medchal Dist, T.S-501 301.

CC:

1. All HOD'S
2. Copy to circulate and displayed in the notice board.



# MEGHA INSTITUTE OF ENGINEERING AND TECHNOLOGY FOR WOMEN

(Approved by AICTE & Affiliated to JNTUH)

SY. NO. 7, EDULABAD (V), GHATKESAR (M), MEDCHAL (D), TELANGANA - 501301

## PROGRAM REPORT

Name of the Event	PLANT DISTRIBUTION PROGRAMME				
Date of Event	03/08/2018	Venue	MARRIPALLY GUDAM VILLAGE		
Total No. of Participants:	21	No of Student Participants	18	No of Faculty Participants	03
Name of the Coordinator	Mr K Madhu Babu, Asst Professor, MBA Department, NSS UNIT-MIETW				

NSS Unit ,MIETW has organized plant distribution program in the nearby village Marripallygudem as a part government initiate to increase the Green ecology in the state of Telangana.The government has issued plants for free distribution to the college , the same were distributed with the help of NSS UNIT in the village.

The students while distributing the plants gave wide awareness to the plants increase in order to cope up with the green culture. The students and faculty members visited to the village and the people there received well and interacted with the college students.



Students distributing the plants in the Marripallygudem village.

*Mr K Madhu Babu*  
Asst Professor  
MBA Department  
NSS Unit  
MIETW  
Edulabad (V), Medchal (D),  
Telangana State - 501301

*[Signature]*  
PRINCIPAL  
MEGHA INSTITUTE OF ENGINEERING  
AND TECHNOLOGY FOR WOMEN.  
Edulabad (V), Medchal (D), Telangana State.





No.MIETW/NSS/2017/Oct/

Date : 06/Oct/2017

**CIRCULAR**  
**PLANTATION DRIVE**

It happy to announce you the College NSS- Unit has planned to organize “**PLANTATION DRIVE**” on 08-03-2017 at 11.00 AM at ZPHS SCHOOL EDULABAD.

As such, it is advised that all the students to attend this event and make it grand success.

**Coordinator**

**Principal**

CC:

1.Copy to all HOD's-CSE,ECE,EEE,CE,MBA,H&S.

2.Copy of Circular to be displayed at Department Notice Board.

**Principal**  
**Megha Inst. of Engg. & Tech. for Women**  
Edulabad (V), Ghatkesar (M),  
Medchal Dist, T.S-501 301.

**PRINCIPAL**  
**MEGHA INSTITUTE OF ENGINEERING**  
**AND TECHNOLOGY FOR WOMEN.**  
Edulabad (V), Medchal (D), Telangana State.

**PROGRAM REPORT**

<b>Name of the Event</b>	<b>PLANTATION DRIVE @ ZPHS SCHOOL</b>				
<b>Date of Event</b>	08/March/2017	<b>Venue</b>	ZPHS SCHOOL		
<b>Total No. of Participants:</b>	<b>45</b>	No of Student Participants	<b>40</b>	No of Faculty Participants	<b>05</b>
<b>Name of the Coordinator</b>	<b>Mr Mohd Abdul Hafeez, Asst Professor, CSE Department, NSS UNIT-MIETW</b>				

Megha Institute of Engineering and Technology for Women National Service Scheme Has Conducted “Plantation Drive” on **08-03-2017** at ZPHS School, Edulabad. As a part of this, NSS Volunteers, NSS In charge and Faculty Members from department of CSE are involved. On the day of the event, all the NSS volunteers, NSS faculty In charge and four Faculty Members of the parent department started from the college at 9.30 am in bus and reached the `by 10:00 am. After reaching the School , all the volunteers are again divided into 8 groups by the faculty in-charge with a faculty along with them. All the 8 groups selected different areas at the school where the plantation need to be done. Volunteers along with the faculty planted the tree sapling at different areas.

The programme ended at 1.00 PM. All the Volunteers and faculty thanks the Principal of ZPHS for accepting the programme. Principal felt very happy for the initiative taken by the MIETW Volunteer’s and asked them to continue such in future also. All the NSS Volunteers along with the faculty back to the college by 1.30 PM

**EVENT PHOTOS**



**NSS-Volunteers along with Faculty Ready for the Plantation Drive @ ZPHS School**

*Useema*  
**PRINCIPAL**  
 MEGHA INSTITUTE OF ENGINEERING  
 AND TECHNOLOGY FOR WOMEN.  
 Edulabad (V), Ghatkesar (M), Medchal (D), Telangana - 501301





# MEGHA INSTITUTE OF ENGINEERING AND TECHNOLOGY FOR WOMEN

(Approved by AICTE & Affiliated to JNTUH)

SY. NO. 7, EDULABAD (V), GHATKESAR (M), MEDCHAL (D), TELANGANA - 501301

---

No. MIETW / NSS / 2017 / JULY

DATE: 07-07-2017

## CIRCULAR

### HARITHA HARAM PROGRAMME.

The College will organize 'HARITHA HARAM PROGRAMME' ON 12th July 2017 at 10:30 Am in MIETW Campus. All the staff and Students are advised to attend the program without fail and make it a grand success.

PRINCIPAL

Principal  
Megha Inst. of Engg. & Tech. for Women  
Eduilabad (V), Ghatkesar (M),  
Medchal Dist, T.S-501 301.

CC:

1. All HOD'S
2. Copy to circulate and displayed in the notice board.



# MEGHA INSTITUTE OF ENGINEERING AND TECHNOLOGY FOR WOMEN

(Approved by AICTE & Affiliated to JNTUH)

SY. NO. 7, EDULABAD (V), GHATKESAR (M), MEDCHAL (D), TELANGANA - 501301

## PROGRAM REPORT

Name of the Event	HARITA HARAM				
Date of Event	12.07.2017	Venue	MIETW CAMPUS		
Total No. of Participants:	29	No of Student Participants	19	No of Faculty Participants	10
Name of the Coordinator	Mr K Madhu Babu, Asst Professor, MBA Department, NSS UNIT-MIETW				

Haritha haram programme initiated by Telangana Government was organised by NSS units Megha Institute of Engineering and Technology for Women, Ghatkesar. The programme was inaugurated by principal Dr S A Muzeer and all HOD'S of all Departments by planting the first sapling in the college premises. This was preceded by a short presentation by NSS volunteers along with NSS programme officers on importance of having a clean and green environment. The NSS Volunteers spread awareness on the importance of planting trees through sloganeering in and around the college campus. The programme laid thrust on planting medicinal and air purifying plants. NSS Volunteers planted 50 sampling like bogavilla, tulsi, aloe vera, neem and few fruit plant sampling.

### EVENT PHOTOS:



**NSS Volunteer of MIETW along with faculty members Planting a Tree on the Day of Haritha – Haram Program**

*Madhu*  
**NSS Co-ordinator**  
 Megha Institute Of Engg And Tech For Women  
 Edulabad (V) Ghatkesar (M), Medchal Dist T.S-501301

*S. A. Muzeer*  
**Principal**  
 Megha Inst Of Engg & Tech for Women  
 Edulabad (V) Ghatkesar (M), Medchal Dist T.S-501301





# MEGHA INSTITUTE OF ENGINEERING AND TECHNOLOGY FOR WOMEN

(Approved by AICTE & Affiliated to JNTUH)

SY. NO. 7, EDULABAD (V), GHATKESAR (M), MEDCHAL (D), TELANGANA - 501301

---

No. MIETW / NSS / 2017 / AUGUST

DATE: 17-08-2017

## CIRCULAR

### MY CAMPUS SWACHH CAMPUS

The college will organize 'MY CAMPUS SWACHH CAMPUS on 11<sup>th</sup> August 2017 at 10:30 in MIETW Campus. All the staff and Students are advised to attend the program without fail and make it a grand success.

PRINCIPAL

Principal

Megha Inst. of Engg. & Tech. for Women,  
Edulabad (V), Ghatkesar (M),  
Medchal Dist, T.S-501 301.

CC:

1. All HOD'S
2. Copy to circulate and displayed in the notice board.



# MEGHA INSTITUTE OF ENGINEERING AND TECHNOLOGY FOR WOMEN

(Approved by AICTE & Affiliated to JNTUH)

SY. NO. 7, EDULABAD (V), GHATKESAR (M), MEDCHAL (D), TELANGANA - 501301

## PROGRAM REPORT

Name of the Event	MY CAMPUS SWACHH CAMPUS				
Date of Event	11/08/2017		Venue	MIETW CAMPUS	
Total No. of Participants:	22	No of Student Participants	20	No of Faculty Participants	02
Name of the Coordinator	Mr K Madhu Babu, Asst Professor, MBA Department, NSS UNIT-MIETW				

Students and Faculty members of the MIETW have actively participated in the MY CAMPUS SWACHH CAMPUS, on 11<sup>th</sup> Aug 2017 with the main theme to maintain the campus surrounding clean and neat. Students of various departments participated in the event and swepted the requisite areas free from waste/debris. For the program NSS Unit of MIETW has procured required precautionary materials like hand gloves, face masks, etc and made the event a successful one. Wide awareness was created among the students in the college to maintain the campus a lively one.



Students actively participating in the cleaning activity under MY CAMPUS SWACHH CAMPUS

*Madhu*  
NSS Co-ordinator  
Megha Institute Of Engg. And Tech For Women  
Edulabad(v) Ghatkesar (M), Medchal Dist TS-501301

PRINCIPAL  
MEGHA INSTITUTE OF ENGINEERING  
AND TECHNOLOGY FOR WOMEN,  
Edulabad (V), Medchal (D), Telangana State.





No.MIETW/NSS/2017/MAY/

Date : 01/05/2017

**CIRCULAR**  
**PLANTATION DRIVE**

It happy to announce you that ,the College NSS- Unit has planned to organize “SAPLING DISTRIBUTION PROGRAMME ” on 03/05/2017 at 11.00 AM at Marripally Gudam Village. As such, it is advised interested students to register their name at NSS Cell.

*Mady*

Coordinator

*Useyin*

Principal

CC:

1.Copy to all HOD's-CSE, ECE, EEE, CE, MBA, H&S.

2.Copy of Circular to be displayed at Department Notice Board.

Principal  
Megha Inst. of Engg. & Tech. for Women  
Edulabad (V), Ghatkesar (M),  
Medchal Dist, T.S-501 301.

*Useyin*  
PRINCIPAL  
MEGHA INSTITUTE OF ENGINEERING  
AND TECHNOLOGY FOR WOMEN.  
Edulabad (V), Medchal (D), Telangana State.

**PROGRAM REPORT**

<b>Name of the Event</b>	<b>SAPLING DISTRIBUTION PROGRAMME</b>			
<b>Date of Event</b>	03/05/2017	<b>Venue</b>	MARRIPALLY GUDAM VILLAGE	
<b>Total No. of Participants:</b>	<b>41</b>	No of Student Participants	<b>36</b>	No of Faculty Participants <b>05</b>
<b>Name of the Coordinator</b>	<b>Mr K Madhu Babu, Asst Professor, MBA Department, NSS UNIT-MIETW</b>			

NSS-UNIT MIETW has conducted the SAPLING DISTRIBUTION PROGRAMME on **Date** at Marripally Gudam village, NSS Volunteers Started from the Campus at 10.30 AM in the college Bus after reaching the Village NSS Volunteer along with Faculty members Divided into 8 groups and selected different streets.

Some of our Volunteers had visited every house and distributed samplings and made them aware of importance of trees and adverse effect of deforestation. Most of the villagers showed a great interest towards planting trees and, they gave an assurance that they will take care of them.

Some of the villagers interacted with the volunteers and shared their feelings and problems with them. Our volunteers listened to their problems and made them feel comfortable to make them happy by giving a hope that they will pass all the problems in the village to the Panchayat & Govt. to take necessary actions to solve the problems in the village.

Programme ended at 1.00 PM all the NSS Volunteer board the bus and back to the college by 2.00 PM. Students felt very happy after the programme and they are very much existed to do such program in future also.



**NSS Volunteer hand overing the Tree Sapling to The Bakery Shop Owner**

*Chesma*  
**PRINCIPAL**  
 MEGHA INSTITUTE OF ENGINEERING  
 AND TECHNOLOGY FOR WOMEN.  
 Edulabad (V), Medchal (D), Telangana State.





NSS Volunteer along with NSS coordinator Distributing Tree Sapling to Shop owner



NSS Volunteer Briefing to the house hold about the importance of Plating Trees

  
PRINCIPAL  
MEGHA INSTITUTE OF ENGINEERING  
AND TECHNOLOGY FOR WOMEN.  
Edulabad (V), Medchal (D), Telangana State.



No.MIETW/NSS/2016/DEC/

Date :01/12/2016

**CIRCULAR**  
**PLANTATION DRIVE**

It happy to announce you that ,the College NSS- Unit has planned to organize Plantation Programme “MY EARTH – MY DUTY” on 2<sup>ND</sup> DEC, 2016 at 11.00 AM at MIETW CAMPUS. As such, it is advised all the students and faculty to participate in the programe.

  
Coordinator

  
Principal  
Megha Inst. of Engg. & Tech. for Women  
Edulabad (V), Ghatkesar (M),  
Medchal Dist, T.S-501 301.

CC:

- 1.Copy to all HOD's-CSE,ECE,EEE,CE,MBA,H&S.
- 2.Copy of Circular to be displayed at Department Notice Board.

  
PRINCIPAL  
MEGHA INSTITUTE OF ENGINEERING  
AND TECHNOLOGY FOR WOMEN.  
Edulabad (V), Medchal (D), Telangana State.



**PROGRAM REPORT**

<b>Name of the Event</b>	<b>MY EARTH – MY DUTY</b>			
<b>Date of Event</b>	2 <sup>ND</sup> DEC,2016	<b>Venue</b>	MIETW CAMPUS	
<b>Total No. of Participants:</b>		No of Student Participants	No of Faculty Participants	
<b>Name of the Coordinator</b>	<b>Mr K Madhu Babu, Asst Professor, MBA Department, NSS UNIT-MIETW</b>			

The NSS Unit of MIETW “Tree Plantation” programme “MY EARTH – MY DUTY” under the National Service Scheme (NSS) on Wednesday, Date at MIETW Campus and Surrounding as well as. It was attended by NSS Programme Coordinator, college staff and student volunteers. Under the Guidance of Asst. Prof Mrs Maheswari, NSS Program Coordinator, NSS volunteers planted more than 25 trees. The students also placed bricks as barricades and each student took the responsibility to nourish and maintain the allocated plant.

**Event Photos :**



**NSS Volunteer along with MBA Faculty Planting Trees near by MIETW**

*Principals*  
**PRINCIPAL**  
 MEGHA INSTITUTE OF ENGINEERING  
 AND TECHNOLOGY FOR WOMEN.  
 Edulabad (V), Medchal (D), Telangana State.